



---

## PROJECT INFORMATION

---

**Project Title:** Desert Valley  
**Project Type:** (NO PROJECT REVIEW) SPECIES LIST ONLY  
**Latitude/Longitude (DMS):** 32.101157 / -106.640979  
**County(s):** DONA ANA  
**Project Description:** Preliminary results for potential impacts

## REQUESTOR INFORMATION

---

**Project Organization:**  
**Contact Name:** Frank Acosta  
**Email Address:** F.acostarodriguez@tetrattech.com  
**Organization:** Tetra Tech, Inc.  
**Address:** 390 Union Blvd #400, Lakewood CO 80228  
**Phone:** (626) 470-2439

## OVERALL STATUS

---

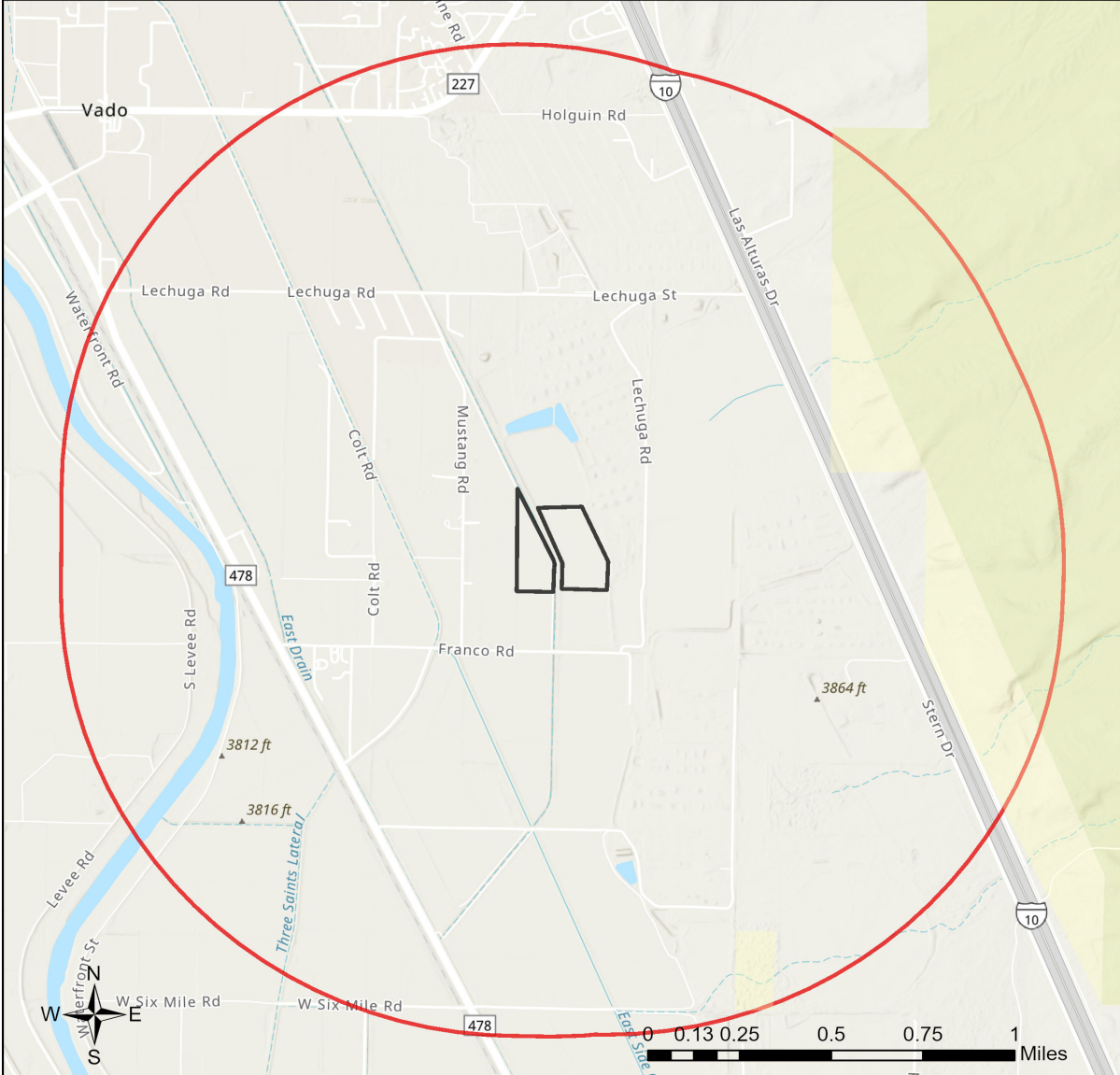
The information contained within this report comprises the recommendations of the New Mexico Department of Wildlife (Department) for management and mitigation of proposed project impacts to wildlife and habitat resources; see the Project Recommendations section below for further details. No further consultation with the Department is required based on the project's location and, with implementation of mitigation measures described in the Project Recommendations section below, no adverse effects to wildlife or important habitats are anticipated. However, a Department biologist may be in touch within 30 days if they determine that further review is required.

---

**About this report:**

- This environmental review is based on the project description and location that was entered. The report must be updated if the project type, area, or operational components are modified.
- This is a preliminary environmental screening assessment and report. It is not a substitute for the potential wildlife knowledge gained by having a biologist conduct a field survey of the project area. Federal status and plant data are provided as a courtesy to users. The review is also not intended to replace consultation required under the federal Endangered Species Act (ESA), including impact analyses for federal resources from the U.S. Fish and Wildlife Service (USFWS) using their [Information for Planning and Consultation tool](#).
- This report contains information on wildlife species protected under the ESA and the [Wildlife Conservation Act \(WCA\)](#), [Species of Greatest Conservation Need \(SGCN\)](#) (page 18, table 5), and Species of Economic and Recreational Importance (SERI). Species listed under the ESA are protected from take at the federal level and under the WCA are protected from take at the state level. SGCN are identified in the [State Wildlife Action Plan \(SWAP\) for New Mexico](#); all of these species are considered to be of conservation concern but not all of them are protected from take at the state or federal level. The harvest of all SERI is regulated at the state level. The Department has no authority to designate critical habitat for species listed under the WCA; only the USFWS can designate critical habitat for species listed under the ESA.
- The New Mexico Environmental Review Tool (ERT) utilizes species observation locations and species habitat suitability models, both of which are subject to ongoing change and refinement. Inclusion or omission of a species within a report cannot guarantee species presence or absence within your project area. To determine occurrence of any species listed in this report, or other wildlife that may be present within your project area, onsite surveys conducted by a qualified biologist during appropriate, species-specific survey timelines may be necessary. Any surveys including handling or capturing wildlife may require a scientific collection permit; contact the Department's Wildlife Permits Manager at [dgf.permits@dgf.nm.gov](mailto:dgf.permits@dgf.nm.gov) for more information.
- The Department encourages use of the ERT to modify proposed projects for avoidance, minimization, or mitigation of wildlife impacts. However, the ERT is not intended to be used in a repeatedly iterative fashion to adjust project attributes until a previously determined recommendation is generated. The ERT serves to assess impacts once project details are developed. The [New Mexico Crucial Habitat Assessment Tool](#), the data layers from which are included in the ERT, is the appropriate system for advising early-stage project planning and design to avoid areas of anticipated wildlife concerns and associated regulatory requirements.

# Desert Valley



- |                           |                              |   |
|---------------------------|------------------------------|---|
| Buffered Project Boundary | NM Department of Game & Fish | U.S. Army Corps of Engineers                |
| Project_Boundary          | NM State Forestry Division   | U.S. Bureau of Reclamation                  |
| Bureau of Land Management | NM State Parks               | U.S. Department of Agriculture              |
| City Land                 | Other Federal Agency         | U.S. Fish and Wildlife Service              |
| County Land               | Other Federal Agency         | U.S. Forest Service                         |
| Department of Defense     | State Land Office            | U.S. Natural Resources Conservation Service |
| Department of Energy      | State of New Mexico          |   |
| National Park Service     | Tribal Land                  |   |

NHNM, USGS, USFS, US Census Bureau, NMDGF  
 Esri, NASA, NGA, USGS, FEMA  
 Texas Parks & Wildlife, CONANP, Esri, TomTom, Garmin, SafeGraph, GeoTechnologies, Inc, METI/NASA, USGS, Bureau of Land Management, EPA, NPS, US Census Bureau, USDA, USFWS

**Special Status Animal Species Potentially within 2000 Meters of Project Area**

Common Name	Scientific Name	USFWS (ESA)	NMDOW (WCA)	NMDOW SGCN/SERI	USFS	USFS SCC	BLM
<a href="#">Barking Frog</a>	<a href="#">Craugastor augusti</a>			SGCN			
<a href="#">Plains Leopard Frog</a>	<a href="#">Lithobates blairi</a>			SGCN			BLM WATCH
<a href="#">Northern Leopard Frog</a>	<a href="#">Lithobates pipiens</a>			SGCN	Sensitive Species	USFS R3 SCC	BLM SENSITIVE
<a href="#">American Bittern</a>	<a href="#">Botaurus lentiginosus</a>			SGCN			BLM WATCH
<a href="#">Bald Eagle</a>	<a href="#">Haliaeetus leucocephalus</a>		T	SGCN	Sensitive Species		BLM SENSITIVE
<a href="#">Common Black-Hawk</a>	<a href="#">Buteogallus anthracinus</a>		T	SGCN	Sensitive Species		BLM WATCH
<a href="#">Aplomado Falcon</a>	<a href="#">Falco femoralis</a>		E	SGCN			
<a href="#">Peregrine Falcon</a>	<a href="#">Falco peregrinus</a>		T	SGCN			BLM WATCH
<a href="#">Snowy Plover</a>	<a href="#">Anarhynchus nivosus nivosus</a>			SGCN			
<a href="#">Long-Billed Curlew</a>	<a href="#">Numenius americanus</a>			SGCN 2025			BLM WATCH
<a href="#">Elf Owl</a>	<a href="#">Micrathene whitneyi</a>			SGCN			BLM WATCH
<a href="#">Western Burrowing Owl</a>	<a href="#">Athene cunicularia hypugaea</a>			SGCN	Sensitive Species	USFS R3 SCC	BLM SENSITIVE
<a href="#">Common Nighthawk</a>	<a href="#">Chordeiles minor</a>			SGCN			
<a href="#">Lewis's Woodpecker</a>	<a href="#">Melanerpes lewis</a>			SGCN		USFS R3 SCC	BLM WATCH
<a href="#">Bank Swallow</a>	<a href="#">Riparia riparia</a>			SGCN			
<a href="#">Pinyon Jay</a>	<a href="#">Gymnorhinus cyanocephalus</a>			SGCN		USFS R3 SCC	BLM SENSITIVE
<a href="#">Pygmy Nuthatch</a>	<a href="#">Sitta pygmaea</a>			SGCN			
<a href="#">Western Bluebird</a>	<a href="#">Sialia mexicana</a>			SGCN			
<a href="#">Mountain Bluebird</a>	<a href="#">Sialia currucoides</a>			SGCN			
<a href="#">Bendire's Thrasher</a>	<a href="#">Toxostoma bendirei</a>			SGCN		USFS R3 SCC	BLM SENSITIVE
<a href="#">Sprague's Pipit</a>	<a href="#">Anthus spragueii</a>			SGCN			BLM SENSITIVE
<a href="#">Loggerhead Shrike</a>	<a href="#">Lanius ludovicianus</a>			SGCN		USFS R3 SCC	BLM WATCH

**Special Status Animal Species Potentially within 2000 Meters of Project Area**

Common Name	Scientific Name	USFWS (ESA)	NMDOW (WCA)	NMDOW SGCN/SERI	USFS	USFS SCC	BLM
<a href="#">Bell's Vireo</a>	<a href="#">Vireo bellii</a>		T	SGCN			BLM SENSITIVE
<a href="#">Virginia's Warbler</a>	<a href="#">Leiothlypis virginiae</a>			SGCN			BLM SENSITIVE
<a href="#">Lucy's Warbler</a>	<a href="#">Leiothlypis luciae</a>			SGCN			BLM WATCH
<a href="#">Black-Throated Gray Warbler</a>	<a href="#">Setophaga nigrescens</a>			SGCN			BLM WATCH
<a href="#">Black-Chinned Sparrow</a>	<a href="#">Spizella atrogularis</a>			SGCN			BLM WATCH
<a href="#">Vesper Sparrow</a>	<a href="#">Poocetes gramineus</a>			SGCN			
<a href="#">Thick-billed Longspur</a>	<a href="#">Rhynchophanes mccownii</a>			SGCN			BLM SENSITIVE
<a href="#">Chestnut-Collared Longspur</a>	<a href="#">Calcarius ornatus</a>			SGCN			BLM SENSITIVE
<a href="#">Cassin's Finch</a>	<a href="#">Haemorhous cassinii</a>			SGCN			BLM WATCH
<a href="#">Spotted Bat</a>	<a href="#">Euderma maculatum</a>		T	SGCN	Sensitive Species	USFS R3 SCC	BLM SENSITIVE
<a href="#">Mule Deer</a>	<a href="#">Odocoileus hemionus</a>			SERI			
<a href="#">Pronghorn</a>	<a href="#">Antilocapra americana</a>			SERI			
<a href="#">Rock Rattlesnake</a>	<a href="#">Crotalus lepidus</a>			SGCN			
<a href="#">Desert Massasauga</a>	<a href="#">Sistrurus catenatus edwardsii</a>			SGCN			

Common Name hyperlink takes you to species account in [bison-m.org](http://bison-m.org); Scientific Name hyperlink takes you to information in [NatureServe Explorer](#); ESA = Endangered Species Act, C = Candidate, LE = Listed Endangered, LT = Listed Threatened, XN = Non-essential Experimental Population, for other ESA codes see this [website](#); WCA = Wildlife Conservation Act, E = Endangered, T = Threatened; SERI = Species of Economic and Recreational Importance; SGCN = Species of Greatest Conservation Need; USFS = U.S. Forest Service, Sensitive Species = A species likely to occur on USFS lands that is of concern for a potential reduction in population viability; SCC = Species of Conservation Concern; BLM = Bureau of Land Management, BLM SENSITIVE = A species that occurs on BLM lands and whose viability is at risk, BLM WATCH = Species that may be added to the sensitive species list in future pending new information regarding species status.

**Special Status Plant Species Potentially within 2000 Meters of Project Area**

Common Name	Scientific Name	USFWS (ESA)	NMAC	NMRPCS	USFS	USFS SCC	BLM
<a href="#">Sand Prickly-Pear</a>	<a href="#">Opuntia arenaria</a>		E	SS			BLM SENSITIVE

NMAC = New Mexico Administrative Code, E = Endangered; NMRPCS = [New Mexico Rare Plant Conservation Strategy](#), SS = NM Rare Plant Conservation Strategy Species; USFS = U.S. Forest Service, Sensitive Species = A species likely to occur on USFS lands that is of concern for a potential

reduction in population viability; SCC = Species of Conservation Concern; BLM = Bureau of Land Management, BLM SENSITIVE = A species that occurs on BLM lands and whose viability is at risk, BLM WATCH = Species that may be added to the sensitive species list in future pending new information regarding species status.

## Project Recommendations

This report includes a preliminary species list that may be used during early stages of project or conservation planning. Even if this report indicates that your proposed project location would require a custom review from a biologist, **no review will be returned** until additional project details are provided. **To obtain a project review**, please submit additional details regarding the **type** of project, project **objectives**, anticipated project **duration**, **timing** of project construction, the composition and dimensions/quantities of **materials** that will be utilized for project implementation, any **equipment** that will be used, anticipated **ground disturbance** that will occur, wildlife surveys or observations that have occurred on or near the project site, and **any other relevant details** regarding potential effects of project activities on wildlife or wildlife habitat. **Photographs** of the project site are especially useful.

Although this project report may include management recommendations based on the project location, additional conservation measures may be needed. The Department can not fully assess potential effects and associated management recommendations until a **project type and description** have been submitted and an appropriate **impact buffer** for that project type has been applied. Also, the species list within this report represents an estimation of special status species that could be present at the site of a small-scale project. Species lists for projects that occur across **broader geographic scales** (e.g., one or more counties, multiple habitat types) are more appropriately obtained from the **Department's Biota Information System of New Mexico (BISON-M) database**. Species lists generated by the ERT may contain modeled species distributions in order to predict species occurrences within areas that lack previous wildlife inventories or surveys. This list can be refined using occurrence-based information within BISON-M regarding wildlife-habitat relationships and biological needs for species that might be present within the project footprint.

Burrowing owl (*Athene cunicularia*) may occur within your project area. Burrowing owls are protected from take by the Migratory Bird Treaty Act and under New Mexico state statute. Before any ground disturbing activities occur, the Department recommends that a preliminary burrowing owl survey be conducted by a qualified biologist using the Department's [Burrowing Owl Survey Protocol](#). Surveys including audio calls may require a scientific collection permit; contact the Department's Wildlife Permits Manager at [dgf.permits@dgf.nm.gov](mailto:dgf.permits@dgf.nm.gov) for more information. Should burrowing owls be documented in the project area, please contact the Department or USFWS for further recommendations and information on any permitting requirements regarding relocation or avoidance of impacts.

Your project area intersects an Important Plant Area (IPA) that contains one or more species of plants listed as threatened or endangered by the New Mexico Energy, Minerals and Natural Resources Department (EMNRD) under New Mexico Statutes Annotated (NMSA) 75-6-1 or by the USFWS under the federal ESA. Although IPAs have no legal designation, they have been identified as areas that support either a high diversity of sensitive plant species or contain the last remaining locations of New Mexico's most endangered plants. The Department recommends that you consult with EMNRD's [Endangered Plant Program Coordinator](#) regarding any state-listed plants and the USFWS's [Information for Planning and Consultation \(IPAC\)](#) system for any federally-listed plants and reaching out to the appropriate federal species lead(s) with the [New Mexico Ecological Services Office of USFWS](#). The Department does not have any authority to designate or advise on state- or federally-listed plants.

The proposed project occurs within or near a riparian area. Because riparian areas are important wildlife habitats, the project footprint should avoid removing any riparian vegetation or creating ground disturbance either directly within or affecting the riparian area, unless the project is intended to restore riparian habitat through non-native plant removal and replanting with native species. If your project involves removal of non-native riparian trees or planting of native riparian vegetation, please refer to the Department's habitat handbook guideline for [Restoration and Management of Native and Non-native Trees in Southwestern Riparian Ecosystems](#). The [New Mexico Riparian Habitat Map \(NMRipMap\)](#) may also provide useful information on local riparian habitat composition and structure.

The current project area appears to contain one or more wetland types as classified by the New Mexico Environment Department's [Wetland Map](#). Information on wetlands in your project area can also be viewed on the ERT's [Create Project/Map](#) page. This [key](#) can assist in interpreting Landscape Position, landform, water flow path, and waterbody type (LLWW) codes in the ERT's wetland data. Wetlands provide important habitat for numerous species of wildlife and pollinators and provide ecosystem services, such as water filtration and storage, to downstream users. The Department recommends avoiding disturbance of wetlands whenever possible, avoiding actions or infrastructure installment that may disrupt natural wetland hydrological processes, and reseeding or replanting areas where disturbance cannot be avoided with native wetland plant species appropriate to the local wetland type. For a list of native seed providers, please see the Department's habitat handbook guideline for [Restoration and Management of Native and Non-native Trees in Southwestern Riparian Ecosystems](#). For projects involving filling wetlands under federal jurisdiction, please contact the [Army Corps of Engineers](#) for more information on permits required under the Clean Water Act.

**Disclaimers regarding recommendations:**

- The Department provides technical guidance to support the persistence of all protected species of native fish and wildlife, including game and nongame wildlife species. Species listed within this report include those that have been documented to occur within the project area, and others that may not have been documented but are projected to occur within the project vicinity.
- Recommendations are provided by the Department under the authority of § 17-1-5.1 New Mexico Statutes Annotated 1978, to provide "communication and consultation with federal and other state agencies, local governments and communities, private organizations and affected interests responsible for habitat, wilderness, recreation, water quality and environmental protection to ensure comprehensive conservation services for hunters, anglers and nonconsumptive wildlife users".
- The Department has no authority for management of plants or Important Plant Areas. The [New Mexico Endangered Plant Program](#), under the Energy, Minerals, and Natural Resources Department's Forestry Division, identifies and develops conservation measures necessary to ensure the survival of plant species within New Mexico. Plant status information is provided within this report as a courtesy to users. Recommendations provided within the ERT may not be sufficient to preclude impacts to rare or sensitive plants, unless conservation measures are identified in coordination with the Endangered Plant Program.
- Additional coordination and/or consultation may also be necessary under the federal ESA or National Environmental Policy Act (NEPA). Further site-specific mitigation recommendations may be proposed during ESA consultation and/or NEPA analyses or through coordination with affected federal agencies.
- Unless a project is marked as confidential in the title or description by the project proponent and if a ERT-generated report is the only response that the project proponent receives from the Department, then the report will be made publicly accessible via the [Public Comment Letters](#) page on the ERT website.