



PROJECT INFORMATION

Project Title: Seven Cabins Fire (Approx Area)
Project Type: FIRE MANAGEMENT, GENERAL
Latitude/Longitude (DMS): 33.632545 / -105.310210
County(s): LINCOLN
Project Description: This query is strictly for planning purposes only, and will provide NMFD Capitan District with potential resources at risk. Information may be used to inform suppression tactics, suppression repair, and long-term restoration planning

REQUESTOR INFORMATION

Project Organization:
Contact Name: Ethan Seavey
Email Address: ethan.seavey@emnrd.nm.gov
Organization: New Mexico Forestry Division
Address: 8801 Horizon Blvd, Suite 260, Albuquerque NM 87113
Phone: 5054900580

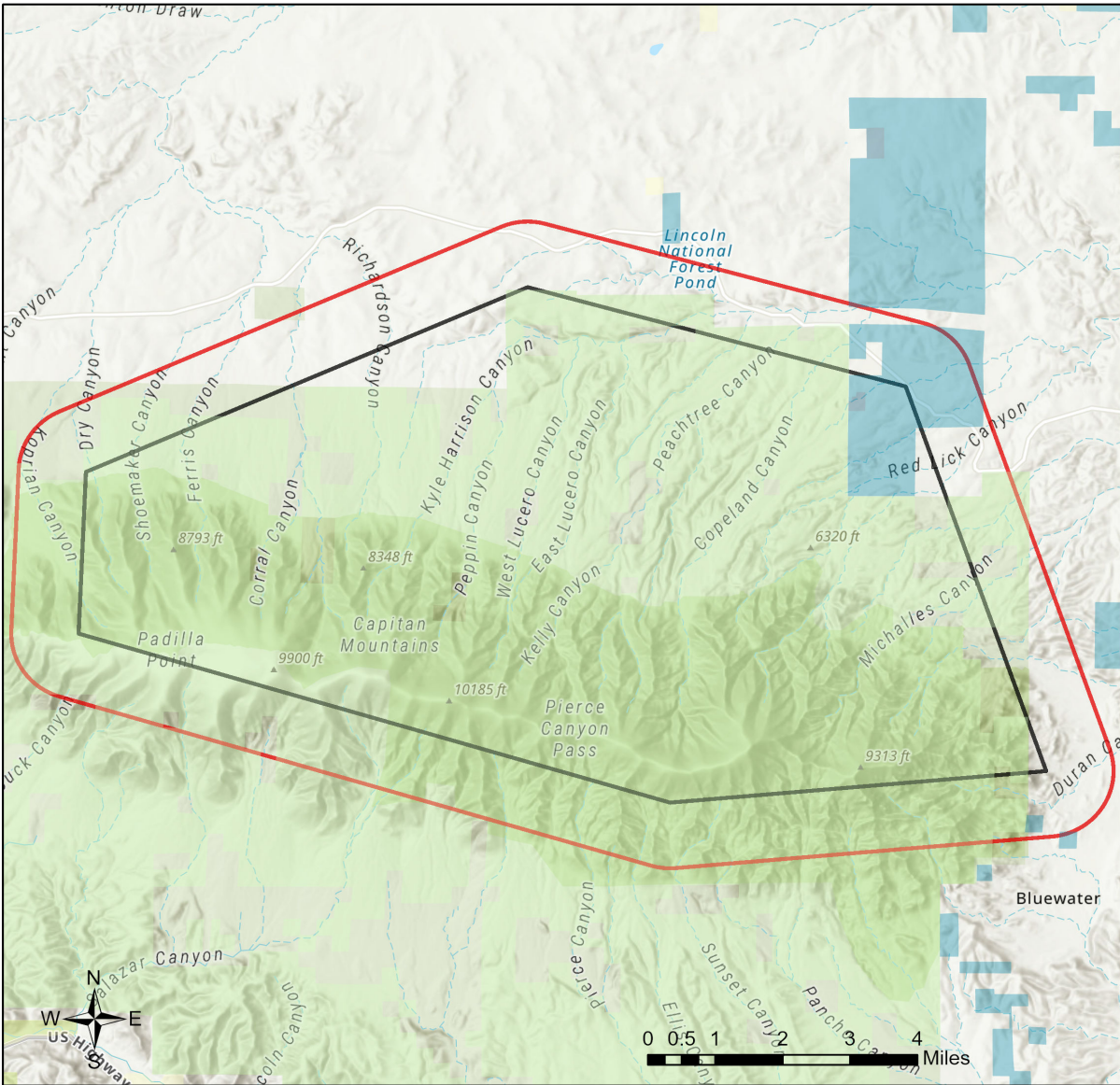
OVERALL STATUS

This report contains an initial list of recommendations regarding potential impacts to wildlife or wildlife habitats from the proposed project; see the Project Recommendations section below for further details. Your project proposal is being forwarded to a New Mexico Department of Wildlife (Department) biologist for review to determine whether there are any additional recommendations regarding the proposed actions. A Department biologist will be in touch within 30 days if there are further recommendations regarding this project proposal.

About this report:

- This environmental review is based on the project description and location that was entered. The report must be updated if the project type, area, or operational components are modified.
- This is a preliminary environmental screening assessment and report. It is not a substitute for the potential wildlife knowledge gained by having a biologist conduct a field survey of the project area. Federal status and plant data are provided as a courtesy to users. The review is also not intended to replace consultation required under the federal Endangered Species Act (ESA), including impact analyses for federal resources from the U.S. Fish and Wildlife Service (USFWS) using their [Information for Planning and Consultation tool](#).
- This report contains information on wildlife species protected under the ESA and the [Wildlife Conservation Act \(WCA\)](#), [Species of Greatest Conservation Need \(SGCN\)](#) (page 18, table 5), and Species of Economic and Recreational Importance (SERI). Species listed under the ESA are protected from take at the federal level and under the WCA are protected from take at the state level. SGCN are identified in the [State Wildlife Action Plan \(SWAP\) for New Mexico](#); all of these species are considered to be of conservation concern but not all of them are protected from take at the state or federal level. The harvest of all SERI is regulated at the state level. The Department has no authority to designate critical habitat for species listed under the WCA; only the USFWS can designate critical habitat for species listed under the ESA.
- The New Mexico Environmental Review Tool (ERT) utilizes species observation locations and species habitat suitability models, both of which are subject to ongoing change and refinement. Inclusion or omission of a species within a report cannot guarantee species presence or absence within your project area. To determine occurrence of any species listed in this report, or other wildlife that may be present within your project area, onsite surveys conducted by a qualified biologist during appropriate, species-specific survey timelines may be necessary. Any surveys including handling or capturing wildlife may require a scientific collection permit; contact the Department's Wildlife Permits Manager at dgf.permits@dgf.nm.gov for more information.
- The Department encourages use of the ERT to modify proposed projects for avoidance, minimization, or mitigation of wildlife impacts. However, the ERT is not intended to be used in a repeatedly iterative fashion to adjust project attributes until a previously determined recommendation is generated. The ERT serves to assess impacts once project details are developed. The [New Mexico Crucial Habitat Assessment Tool](#), the data layers from which are included in the ERT, is the appropriate system for advising early-stage project planning and design to avoid areas of anticipated wildlife concerns and associated regulatory requirements.

Seven Cabins Fire (Approx Area)



- | | | |
|---------------------------|------------------------------|---|
| Buffered Project Boundary | NM Department of Game & Fish | U.S. Army Corps of Engineers |
| Project_Boundary | NM State Forestry Division | U.S. Bureau of Reclamation |
| Bureau of Land Management | NM State Parks | U.S. Department of Agriculture |
| City Land | Other Federal Agency | U.S. Fish and Wildlife Service |
| County Land | Other Federal Agency | U.S. Forest Service |
| Department of Defense | State Land Office | U.S. Natural Resources Conservation Service |
| Department of Energy | State of New Mexico | |
| National Park Service | Tribal Land | |

Texas Parks & Wildlife, Esri, TomTom, Garmin, SafeGraph, GeoTechnologies, Inc, METI/NASA, USGS, EPA, NPS, USDA, USFWS
 NHNM, USGS, USFS, US Census Bureau, NMDGF
 Esri, CGIAR, USGS

Special Status Animal Species Potentially within 1 Miles of Project Area

Common Name	Scientific Name	USFWS (ESA)	NMDOW (WCA)	NMDOW SGCN/SERI	USFS	USFS SCC	BLM
Sacramento Mountain Salamander	Aneides hardii		T	SGCN	Sensitive Species		
Barking Frog	Craugastor augusti			SGCN			
Plains Leopard Frog	Lithobates blairi			SGCN			BLM WATCH
Northern Leopard Frog	Lithobates pipiens			SGCN	Sensitive Species	USFS R3 SCC	BLM SENSITIVE
Aplomado Falcon	Falco femoralis		E	SGCN			
Peregrine Falcon	Falco peregrinus		T	SGCN			BLM WATCH
Mountain Plover	Anarhynchus montanus			SGCN	Sensitive Species		BLM WATCH
Elf Owl	Micrathene whitneyi			SGCN			BLM WATCH
Western Burrowing Owl	Athene cunicularia hypugaea			SGCN	Sensitive Species	USFS R3 SCC	BLM SENSITIVE
Mexican Spotted Owl	Strix occidentalis lucida	LT		SGCN 2025			
Common Nighthawk	Chordeiles minor			SGCN			
Lewis's Woodpecker	Melanerpes lewis			SGCN		USFS R3 SCC	BLM WATCH
Williamson's Sapsucker	Sphyrapicus thyroideus			SGCN			
Bank Swallow	Riparia riparia			SGCN			
Pinyon Jay	Gymnorhinus cyanocephalus			SGCN		USFS R3 SCC	BLM SENSITIVE
Clark's Nutcracker	Nucifraga columbiana			SGCN			
Juniper Titmouse	Baeolophus ridgwayi			SGCN		USFS R3 SCC	BLM WATCH
Pygmy Nuthatch	Sitta pygmaea			SGCN			
Western Bluebird	Sialia mexicana			SGCN			
Mountain Bluebird	Sialia currucoides			SGCN			
Sprague's Pipit	Anthus spragueii			SGCN			BLM SENSITIVE
Loggerhead Shrike	Lanius ludovicianus			SGCN		USFS R3 SCC	BLM WATCH

Special Status Animal Species Potentially within 1 Miles of Project Area

Common Name	Scientific Name	USFWS (ESA)	NMDOW (WCA)	NMDOW SGCN/SERI	USFS	USFS SCC	BLM
Gray Vireo	Vireo vicinior		T	SGCN	Sensitive Species	USFS R3 SCC	BLM WATCH
Virginia's Warbler	Leiothlypis virginiae			SGCN			BLM SENSITIVE
Black-Throated Gray Warbler	Setophaga nigrescens			SGCN			BLM WATCH
Grace's Warbler	Setophaga graciae			SGCN		USFS R3 SCC	BLM WATCH
Vesper Sparrow	Pooecetes gramineus			SGCN			
Chestnut-Collared Longspur	Calcarius ornatus			SGCN			BLM SENSITIVE
Cassin's Finch	Haemorhous cassinii			SGCN			BLM WATCH
Evening Grosbeak	Coccothraustes vespertinus			SGCN			
Rio Grande Cutthroat Trout	Oncorhynchus clarkii virginalis			SGCN			
Brook Trout	Salvelinus fontinalis			SERI			
Spotted Bat	Euderma maculatum		T	SGCN	Sensitive Species	USFS R3 SCC	BLM SENSITIVE
Gray-Footed Chipmunk	Neotamias canipes			SGCN 2025			
Black-Tailed Prairie Dog	Cynomys ludovicianus			SGCN	Sensitive Species		BLM SENSITIVE
Black Bear	Ursus americanus			SERI			
Mountain Lion	Puma concolor			SERI			
Elk	Cervus canadensis			SERI			
Mule Deer	Odocoileus hemionus			SERI			
Pronghorn	Antilocapra americana			SERI			
Western Ribbon Snake	Thamnophis proximus		T	SGCN	Sensitive Species		
Rock Rattlesnake	Crotalus lepidus			SGCN			
Sacred Boisduval's Blue	Icaricia icarioides sacre			SGCN 2025			

Common Name hyperlink takes you to species account in bison-m.org; Scientific Name hyperlink takes you to information in [NatureServe Explorer](#); ESA = Endangered Species Act, C = Candidate, LE = Listed Endangered, LT = Listed Threatened, XN = Non-essential Experimental Population, for other ESA codes see this [website](#); WCA = Wildlife Conservation Act, E = Endangered, T = Threatened; SERI = Species of Economic and Recreational Importance; SGCN = Species of Greatest Conservation Need; USFS = U.S. Forest Service, Sensitive Species = A species likely to occur on USFS lands that is of concern for a potential reduction in population viability; SCC = Species of Conservation

Concern; BLM = Bureau of Land Management, BLM SENSITIVE = A species that occurs on BLM lands and whose viability is at risk, BLM WATCH = Species that may be added to the sensitive species list in future pending new information regarding species status.

Special Status Plant Species Potentially within 1 Miles of Project Area

Common Name	Scientific Name	USFWS (ESA)	NMAC	NMRPCS	USFS	USFS SCC	BLM
Sacramento Mountain Fleabane	Erigeron rybius			SS			
Standley's Whitlow-Grass	Draba standleyi						
Kuenzler's Cactus	Echinocereus fendleri var. kuenzleri	LE	E				
Kerr's Milkvetch	Astragalus kerrii			SS	Sensitive Species	USFS R3 SCC	BLM WATCH
Sierra Blanca Lupine	Lupinus sierrae-blancae			SS			
Shootingstar Geranium	Geranium dodecatheoides			SS	Sensitive Species	USFS R3 SCC	
Wooton's Wild Buckwheat	Eriogonum wootonii			SS		USFS R3 SCC	
White Mountain Larkspur	Delphinium novomexicanum			SS		USFS R3 SCC	
Wooton's Alumroot	Heuchera wootonii			SS	Sensitive Species		
Capitan Peak Alumroot	Heuchera woodsiaephila			SS	Sensitive Species	USFS R3 SCC	
Scarlet Penstemon	Penstemon cardinalis ssp. cardinalis			SS		USFS R3 SCC	
New Mexico Beardtongue	Penstemon neomexicanus						
Goodding's Onion	Allium gooddingii		E		Sensitive Species	USFS R3 SCC	

NMAC = New Mexico Administrative Code, E = Endangered; NMRPCS = [New Mexico Rare Plant Conservation Strategy](#), SS = NM Rare Plant Conservation Strategy Species; USFS = U.S. Forest Service, Sensitive Species = A species likely to occur on USFS lands that is of concern for a potential reduction in population viability; SCC = Species of Conservation Concern; BLM = Bureau of Land Management, BLM SENSITIVE = A species that occurs on BLM lands and whose viability is at risk, BLM WATCH = Species that may be added to the sensitive species list in future pending new information regarding species status.

Project Recommendations

Your proposed project activities may require a custom review for assessment of potential effects to wildlife. See the "OVERALL STATUS" section above to determine the likelihood that your project will be reviewed further based on its location. A Department biologist will confirm whether any additional conservation measures are needed. You should expect to receive any additional project recommendations within 30 days of your project submission. If the "OVERALL STATUS" section indicates that no further consultation with the Department is required based on its location, then you will only receive additional project feedback from the Department if a biologist deems it necessary.

For forestry and forest restoration projects, including fire management activities, occurring in ponderosa pine forests, the Department recommends following the [Ponderosa Pine Restoration Guidelines to Benefit Wildlife](#).

Burrowing owl (*Athene cunicularia*) may occur within your project area. Burrowing owls are protected from take by the Migratory Bird Treaty Act and under New Mexico state statute. Before any ground disturbing activities occur, the Department recommends that a preliminary burrowing owl survey be conducted by a qualified biologist using the Department's [Burrowing Owl Survey Protocol](#). Surveys including audio calls may require a scientific collection permit; contact the Department's Wildlife Permits Manager at dgf.permits@dgf.nm.gov for more information. Should burrowing owls be documented in the project area, please contact the Department or USFWS for further recommendations and information on any permitting requirements regarding relocation or avoidance of impacts.

Your project area intersects a Conservation Opportunity Area (COA) as identified in the [SWAP](#) for New Mexico. These areas contain high numbers of SGCN as identified in the SWAP and therefore represent areas where implementing conservation actions, including restoration projects intended to benefit wildlife, has higher potential to benefit a diversity of species. Within COAs, the Department encourages project proponents to consider (during project planning and design) and mitigate (during project implementation) potential adverse effects to non-federally listed SGCN and their habitats. State-listed and federally-listed species are protected from take by the New Mexico WCA and ESA, respectively, and migratory birds are protected from take by the Migratory Bird Treaty Act.

Your project area intersects designated critical habitat for one or more species that are listed under the federal ESA. The Department recommends that you confirm this using the USFWS's Information for Planning and Consultation (IPAC) system (<https://ipac.ecosphere.fws.gov/>) and then reach out to the appropriate species lead(s) with the [New Mexico Ecological Services Office of USFWS](#). The USFWS has authority to designate critical habitat for species listed under the ESA. The Department has no authority to designate critical habitat for species listed under the WCA or ESA. If there are any federally-listed plants within your project area and your project has a federal nexus, you may find these recommendations from the USFWS useful: [Recommendations for Endangered Species Act Section 7 Consultations Involving Plants in New Mexico](#); [Standards for Conducting and Reporting Consultation Surveys for Federally-Listed, Proposed, and Candidate Plants in New Mexico](#).

Your project area intersects an Important Plant Area (IPA) that contains one or more species of plants listed as threatened or endangered by the New Mexico Energy, Minerals and Natural Resources Department (EMNRD) under New Mexico Statutes Annotated (NMSA) 75-6-1 or by the USFWS under the federal ESA. Although IPAs have no legal designation, they have been identified as areas that support either a high diversity of sensitive plant species or contain the last remaining locations of New Mexico's most endangered plants. The Department recommends that you consult with EMNRD's [Endangered Plant Program Coordinator](#) regarding any state-listed plants and the USFWS's [Information for Planning and Consultation \(IPAC\)](#) system for any federally-listed plants and reaching out to the appropriate federal species lead(s) with the [New Mexico Ecological Services Office of USFWS](#). The Department does not have any authority to designate or advise on state- or federally-listed plants.

Prairie dog colonies may occur within the vicinity of your project area. Both black-tailed prairie dogs (*Cynomys ludovicianus*) and Gunnison's prairie dogs (*Cynomys gunnisoni*) are designated as New Mexico SGCN, and their colonies provide important habitat for other grassland wildlife. Wherever possible, occupied prairie dog colonies should be left undisturbed, and all project activities should be directed off the colony. Any burrows that are located on the project site should be surveyed by a qualified biologist to determine whether burrows are active or inactive and whether burrowing owls may be utilizing the site. Colonies within the range of the black-tailed prairie dog can be surveyed by a qualified biologist diurnally, year-round using binoculars. Colonies within the range of the Gunnison's prairie dog can be surveyed by a qualified biologist diurnally, using binoculars during the warmer months from April through October and by searching for fairly fresh scat and lack of cobwebs or debris at the mouths of burrows during the cold months (November through March). If ground-disturbing activities cannot be relocated off the prairie dog colony, or if project activities involve control of prairie dogs, the Department recommends live-trapping and relocation of prairie dogs. A scientific collection permit may be required; contact the Department's Wildlife Permits Manager at dgf.permits@dgf.nm.gov for more information. The Department can provide recommendations regarding suitability of potential translocation areas and procedures. If a project will only impact 10 or fewer burrows and there is a large, active colony adjacent to the site the continued existence of which will not cause future conflicts, the Department suggests use of reverse dispersal translocation methods as outlined in [Creating Prairie Dog Management Plans Part three: Appendices and Attachments](#) (see Attachment 1). Methods include setting up a wire door over active burrows followed by monitoring and closure of the few burrows in the project disturbance area after prairie dog evacuation and barrier installation to prevent recolonization of closed areas. Removal activities should be performed after the spring breeding and birthing seasons and prior to winter hibernation (e.g., mid-June to mid-November). Prairie dogs in southern New Mexico may remain active in the winter, extending the potential removal period beyond mid-November. Removal activities should also begin roughly one month before construction or other disturbance occurs as it can take between one week and one month for the animals to disperse.

Your proposed project occurs within an area where springs or other important natural water features occur. This may result in the presence of a high use area for wildlife relative to the surrounding landscape. To ensure continued function of these important wildlife habitats, your project should consider measures to avoid the following.

- Altering surface or groundwater flow or hydrology,
- Disturbance to soil that modifies geomorphic properties or facilitates invasion of non-native vegetation.
- Affecting local surface or groundwater quality.
- Creating disturbance to wildlife utilizing these water features. Disturbance to wildlife can be reduced through practices including clustering infrastructure and activity wherever possible, avoiding large visual obstructions around water features, and limiting nighttime project operations or activities.

Department biologists are available for site-specific consultation regarding measures to assist with management and conservation of these habitat resources.

The current project area appears to contain one or more wetland types as classified by the New Mexico Environment Department's [Wetland Map](#). Information on wetlands in your project area can also be viewed on the ERT's [Create Project/Map](#) page. This [key](#) can assist in interpreting Landscape Position, landform, water flow path, and waterbody type (LLWW) codes in the ERT's wetland data. Wetlands provide important habitat for numerous species of wildlife and pollinators and provide ecosystem services, such as water filtration and storage, to downstream users. The Department recommends avoiding disturbance of wetlands whenever possible, avoiding actions or infrastructure installment that may disrupt natural wetland hydrological processes, and reseeding or replanting areas where disturbance cannot be avoided with native wetland plant species appropriate to the local wetland type. For a list of native seed providers, please see the Department's habitat handbook guideline for [Restoration and Management of Native and Non-native Trees in Southwestern Riparian Ecosystems](#). For projects involving filling wetlands under federal jurisdiction, please contact the [Army Corps of Engineers](#) for more information on permits required under the Clean Water Act.

Disclaimers regarding recommendations:

- The Department provides technical guidance to support the persistence of all protected species of native fish and wildlife, including game and nongame wildlife species. Species listed within this report include those that have been documented to occur within the project area, and others that may not have been documented but are projected to occur within the project vicinity.
- Recommendations are provided by the Department under the authority of § 17-1-5.1 New Mexico Statutes Annotated 1978, to provide "communication and consultation with federal and other state agencies, local governments and communities, private organizations and affected interests responsible for habitat, wilderness, recreation, water quality and environmental protection to ensure comprehensive conservation services for hunters, anglers and nonconsumptive wildlife users".
- The Department has no authority for management of plants or Important Plant Areas. The [New Mexico Endangered Plant Program](#), under the Energy, Minerals, and Natural Resources Department's Forestry Division, identifies and develops conservation measures necessary to ensure the survival of plant species within New Mexico. Plant status information is provided within this report as a courtesy to users. Recommendations provided within the ERT may not be sufficient to preclude impacts to rare or sensitive plants, unless conservation measures are identified in coordination with the Endangered Plant Program.
- Additional coordination and/or consultation may also be necessary under the federal ESA or National Environmental Policy Act (NEPA). Further site-specific mitigation recommendations may be proposed during ESA consultation and/or NEPA analyses or through coordination with affected federal agencies.
- Unless a project is marked as confidential in the title or description by the project proponent and if a ERT-generated report is the only response that the project proponent receives from the Department, then the report will be made publicly accessible via the [Public Comment Letters](#) page on the ERT website.