



---

## PROJECT INFORMATION

---

**Project Title:** P66 Roswell  
**Project Type:** (NO PROJECT REVIEW) SPECIES LIST ONLY  
**Latitude/Longitude (DMS):** 33.809090 / -103.958845  
**County(s):** CHAVES; CURRY; ROOSEVELT  
**Project Description:** pipeline

## REQUESTOR INFORMATION

---

**Project Organization:**  
**Contact Name:** Kasey Clarke  
**Email Address:** kasey.clarke@erm.com  
**Organization:** Environmental Resources Management  
**Address:** 11801 Domain Blvd Floor 3, Austin TX 78758  
**Phone:** 8322920815

## OVERALL STATUS

---

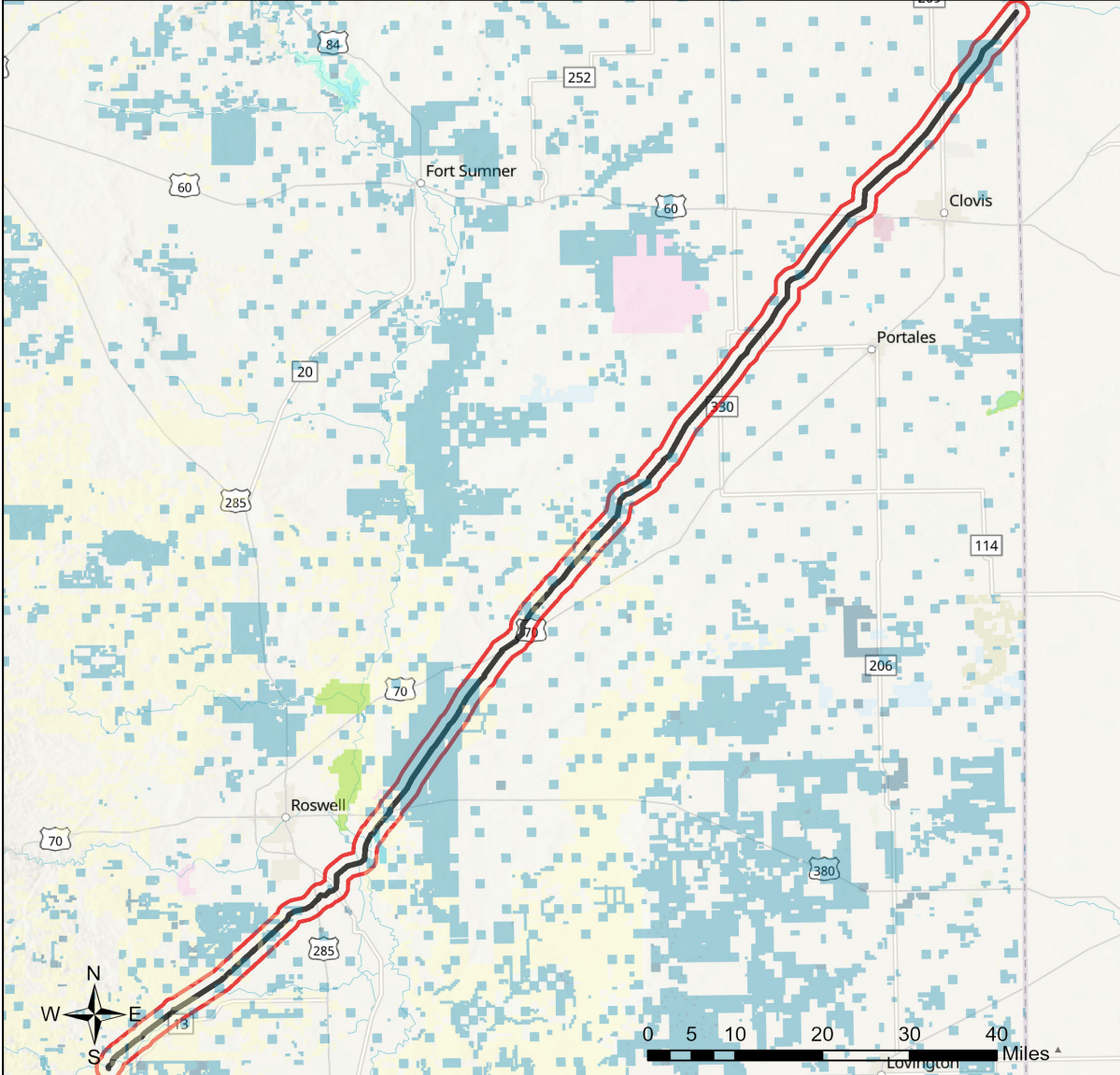
This report contains an initial list of recommendations regarding potential impacts to wildlife or wildlife habitats from the proposed project; see the Project Recommendations section below for further details. Your project proposal is being forwarded to a New Mexico Department of Wildlife (Department) biologist for review to determine whether there are any additional recommendations regarding the proposed actions. A Department biologist will be in touch within 30 days if there are further recommendations regarding this project proposal.

---

**About this report:**

- This environmental review is based on the project description and location that was entered. The report must be updated if the project type, area, or operational components are modified.
- This is a preliminary environmental screening assessment and report. It is not a substitute for the potential wildlife knowledge gained by having a biologist conduct a field survey of the project area. Federal status and plant data are provided as a courtesy to users. The review is also not intended to replace consultation required under the federal Endangered Species Act (ESA), including impact analyses for federal resources from the U.S. Fish and Wildlife Service (USFWS) using their [Information for Planning and Consultation tool](#).
- This report contains information on wildlife species protected under the ESA and the [Wildlife Conservation Act \(WCA\)](#), [Species of Greatest Conservation Need \(SGCN\)](#) (page 18, table 5), and Species of Economic and Recreational Importance (SERI). Species listed under the ESA are protected from take at the federal level and under the WCA are protected from take at the state level. SGCN are identified in the [State Wildlife Action Plan \(SWAP\) for New Mexico](#); all of these species are considered to be of conservation concern but not all of them are protected from take at the state or federal level. The harvest of all SERI is regulated at the state level. The Department has no authority to designate critical habitat for species listed under the WCA; only the USFWS can designate critical habitat for species listed under the ESA.
- The New Mexico Environmental Review Tool (ERT) utilizes species observation locations and species habitat suitability models, both of which are subject to ongoing change and refinement. Inclusion or omission of a species within a report cannot guarantee species presence or absence within your project area. To determine occurrence of any species listed in this report, or other wildlife that may be present within your project area, onsite surveys conducted by a qualified biologist during appropriate, species-specific survey timelines may be necessary.
- The Department encourages use of the ERT to modify proposed projects for avoidance, minimization, or mitigation of wildlife impacts. However, the ERT is not intended to be used in a repeatedly iterative fashion to adjust project attributes until a previously determined recommendation is generated. The ERT serves to assess impacts once project details are developed. The [New Mexico Crucial Habitat Assessment Tool](#), the data layers from which are included in the ERT, is the appropriate system for advising early-stage project planning and design to avoid areas of anticipated wildlife concerns and associated regulatory requirements.

# P66 Roswell



- Buffered Project Boundary
- Project\_Boundary
- Bureau of Land Management
- City Land
- County Land
- Department of Defense
- Department of Energy
- National Park Service
- NM Department of Game & Fish
- NM State Forestry Division
- NM State Parks
- Other Federal Agency
- Other Federal Agency
- State Land Office
- State of New Mexico
- Tribal Land
- U.S. Army Corps of Engineers
- U.S. Bureau of Reclamation
- U.S. Department of Agriculture
- U.S. Fish and Wildlife Service
- U.S. Forest Service
- U.S. Natural Resources Conservation Service

NHNM, USGS, USFS, US Census Bureau, NMDGF  
 Texas Parks & Wildlife, Esri, TomTom, Garmin, SafeGraph, FAO, METI/NASA, USGS, EPA, NPS, USFWS  
 Esri, USGS

**Special Status Animal Species Potentially within 2000 Meters of Project Area**

Common Name	Scientific Name	USFWS (ESA)	NMDGF (WCA)	NMDGF SGCN/SERI	USFS	USFS SCC	BLM
<a href="#">Barking Frog</a>	<a href="#">Craugastor augusti</a>			SGCN 2025			
<a href="#">Plains Leopard Frog</a>	<a href="#">Lithobates blairi</a>			SGCN			BLM WATCH
<a href="#">Clark's Grebe</a>	<a href="#">Aechmophorus clarkii</a>			SGCN			
<a href="#">American Bittern</a>	<a href="#">Botaurus lentiginosus</a>			SGCN			BLM WATCH
<a href="#">Bald Eagle</a>	<a href="#">Haliaeetus leucocephalus</a>		T	SGCN	Sensitive Species		BLM SENSITIVE
<a href="#">Aplomado Falcon</a>	<a href="#">Falco femoralis</a>		E	SGCN			
<a href="#">Peregrine Falcon</a>	<a href="#">Falco peregrinus</a>		T	SGCN			BLM WATCH
<a href="#">Lesser Prairie-Chicken</a>	<a href="#">Typanuchus pallidicinctus</a>	LE		SGCN	Sensitive Species		BLM SENSITIVE
<a href="#">Snowy Plover</a>	<a href="#">Anarhynchus nivosus nivosus</a>			SGCN			
<a href="#">Mountain Plover</a>	<a href="#">Anarhynchus montanus</a>			SGCN	Sensitive Species		BLM WATCH
<a href="#">Long-Billed Curlew</a>	<a href="#">Numenius americanus</a>			SGCN			BLM WATCH
<a href="#">Least Tern</a>	<a href="#">Sternula antillarum</a>	LE	E	SGCN			
<a href="#">Yellow-Billed Cuckoo</a>	<a href="#">Coccyzus americanus</a>	LT		SGCN			
<a href="#">Elf Owl</a>	<a href="#">Micrathene whitneyi</a>			SGCN			BLM WATCH
<a href="#">Western Burrowing Owl</a>	<a href="#">Athene cucularia hypugaea</a>			SGCN	Sensitive Species	USFS R3 SCC	BLM SENSITIVE
<a href="#">Common Nighthawk</a>	<a href="#">Chordeiles minor</a>			SGCN			
<a href="#">Lewis's Woodpecker</a>	<a href="#">Melanerpes lewis</a>			SGCN		USFS R3 SCC	BLM WATCH
<a href="#">Red-Headed Woodpecker</a>	<a href="#">Melanerpes erythrocephalus</a>			SGCN			
<a href="#">Williamson's Sapsucker</a>	<a href="#">Sphyrapicus thyroideus</a>			SGCN			
<a href="#">Bank Swallow</a>	<a href="#">Riparia riparia</a>			SGCN			
<a href="#">Pinyon Jay</a>	<a href="#">Gymnorhinus cyanocephalus</a>			SGCN		USFS R3 SCC	BLM SENSITIVE
<a href="#">Pygmy Nuthatch</a>	<a href="#">Sitta pygmaea</a>			SGCN			
<a href="#">Western Bluebird</a>	<a href="#">Sialia mexicana</a>			SGCN			
<a href="#">Mountain Bluebird</a>	<a href="#">Sialia currucoides</a>			SGCN			

**Special Status Animal Species Potentially within 2000 Meters of Project Area**

Common Name	Scientific Name	USFWS (ESA)	NMDGF (WCA)	NMDGF SGCN/SERI	USFS	USFS SCC	BLM
<a href="#">Sprague's Pipit</a>	<a href="#">Anthus spragueii</a>			SGCN			BLM SENSITIVE
<a href="#">Loggerhead Shrike</a>	<a href="#">Lanius ludovicianus</a>			SGCN		USFS R3 SCC	BLM WATCH
<a href="#">Bell's Vireo</a>	<a href="#">Vireo bellii</a>		T	SGCN			BLM SENSITIVE
<a href="#">Virginia's Warbler</a>	<a href="#">Leiothlypis virginiae</a>			SGCN			BLM SENSITIVE
<a href="#">Black-Throated Gray Warbler</a>	<a href="#">Setophaga nigrescens</a>			SGCN			BLM WATCH
<a href="#">Vesper Sparrow</a>	<a href="#">Pooecetes gramineus</a>			SGCN			
<a href="#">Thick-billed Longspur</a>	<a href="#">Rhynchophanes mccownii</a>			SGCN			BLM SENSITIVE
<a href="#">Chestnut-Collared Longspur</a>	<a href="#">Calcarius ornatus</a>			SGCN			BLM SENSITIVE
<a href="#">Cassin's Finch</a>	<a href="#">Haemorhous cassinii</a>			SGCN			BLM WATCH
<a href="#">Mexican Tetra</a>	<a href="#">Astyanax mexicanus</a>		T	SGCN 2025			BLM SENSITIVE
<a href="#">Rio Grande Cutthroat Trout</a>	<a href="#">Oncorhynchus clarkii virginalis</a>			SGCN	Sensitive Species	USFS R3 SCC	
<a href="#">Arkansas River Shiner</a>	<a href="#">Albumops girardi</a>	LT	E	SGCN 2025			
<a href="#">Rio Grande Shiner</a>	<a href="#">Notropis jemezanus</a>			SGCN 2025			BLM WATCH
<a href="#">Pecos Bluntnose Shiner</a>	<a href="#">Albumops simus pecosensis</a>	LT	E	SGCN 2025			
<a href="#">Pecos Bluntnose Shiner</a>	<a href="#">Notropis simus pecosensis</a>	LT	E	SGCN			
<a href="#">Speckled Chub</a>	<a href="#">Macrhybopsis aestivalis</a>			SGCN 2025			
<a href="#">Flathead Catfish</a>	<a href="#">Pylodictis olivaris</a>			SERI			
<a href="#">Pecos Pupfish</a>	<a href="#">Cyprinodon pecosensis</a>		T	SGCN 2025			BLM SENSITIVE
<a href="#">Least Shrew</a>	<a href="#">Cryptotis parva</a>		T	SGCN			BLM WATCH
<a href="#">Cave Myotis</a>	<a href="#">Myotis velifer</a>			SGCN 2025			
<a href="#">Spotted Bat</a>	<a href="#">Euderma maculatum</a>		T	SGCN	Sensitive Species	USFS R3 SCC	BLM SENSITIVE

**Special Status Animal Species Potentially within 2000 Meters of Project Area**

Common Name	Scientific Name	USFWS (ESA)	NMDGF (WCA)	NMDGF SGCN/SERI	USFS	USFS SCC	BLM
<a href="#">Black-Tailed Prairie Dog</a>	<a href="#">Cynomys ludovicianus</a>			SGCN	Sensitive Species		BLM SENSITIVE
<a href="#">Northern Pygmy Mouse</a>	<a href="#">Baiomys taylori</a>			SGCN 2025	Sensitive Species		
<a href="#">Elk</a>	<a href="#">Cervus canadensis</a>			SERI			
<a href="#">Mule Deer</a>	<a href="#">Odocoileus hemionus</a>			SERI			
<a href="#">Pronghorn</a>	<a href="#">Antilocapra americana</a>			SERI			
<a href="#">Western River Cooter</a>	<a href="#">Pseudemys gorzugi</a>		T	SGCN			BLM SENSITIVE
<a href="#">Dunes Sagebrush Lizard</a>	<a href="#">Sceloporus arenicolus</a>	LE	E	SGCN 2025			
<a href="#">Plainbelly Water Snake</a>	<a href="#">Nerodia erythrogaster</a>		E	SGCN			
<a href="#">Western Ribbon Snake</a>	<a href="#">Thamnophis proximus</a>		T	SGCN	Sensitive Species		
<a href="#">Desert Massasauga</a>	<a href="#">Sistrurus catenatus edwardsii</a>			SGCN			

Common Name hyperlink takes you to species account in [bison-m.org](http://bison-m.org); Scientific Name hyperlink takes you to information in [NatureServe Explorer](#); ESA = Endangered Species Act, C = Candidate, LE = Listed Endangered, LT = Listed Threatened, XN = Non-essential Experimental Population, for other ESA codes see this [website](#); WCA = Wildlife Conservation Act, E = Endangered, T = Threatened; SERI = Species of Economic and Recreational Importance; SGCN = Species of Greatest Conservation Need; USFS = U.S. Forest Service, Sensitive Species = A species likely to occur on USFS lands that is of concern for a potential reduction in population viability; SCC = Species of Conservation Concern; BLM = Bureau of Land Management, BLM SENSITIVE = A species that occurs on BLM lands and whose viability is at risk, BLM WATCH = Species that may be added to the sensitive species list in future pending new information regarding species status.

**Special Status Plant Species Potentially within 2000 Meters of Project Area**

Common Name	Scientific Name	USFWS (ESA)	NMAC	NMRPCS	USFS	USFS SCC	BLM
<a href="#">Tharp's Blue Star</a>	<a href="#">Amsonia tharpii</a>		E				BLM SENSITIVE
<a href="#">Puzzle Sunflower</a>	<a href="#">Helianthus paradoxus</a>	LT	E	SS			
<a href="#">Standley's Whitlow-Grass</a>	<a href="#">Draba standleyi</a>						
<a href="#">Scheer's Pincushion Cactus</a>	<a href="#">Coryphantha robustispina ssp. scheeri</a>		E				BLM SENSITIVE
<a href="#">Gyp Ground Plum</a>	<a href="#">Astragalus gypsodes</a>						BLM SENSITIVE

NMAC = New Mexico Administrative Code, E = Endangered; NMRPCS = [New Mexico Rare Plant Conservation Strategy](#), SS = NM Rare Plant Conservation

Strategy Species; USFS = U.S. Forest Service, Sensitive Species = A species likely to occur on USFS lands that is of concern for a potential reduction in population viability; SCC = Species of Conservation Concern; BLM = Bureau of Land Management, BLM SENSITIVE = A species that occurs on BLM lands and whose viability is at risk, BLM WATCH = Species that may be added to the sensitive species list in future pending new information regarding species status.

## Project Recommendations

This report includes a preliminary species list that may be used during early stages of project or conservation planning. Even if this report indicates that your proposed project location would require a custom review from a biologist, **no review will be returned** until additional project details are provided. **To obtain a project review**, please submit additional details regarding the **type** of project, project **objectives**, anticipated project **duration**, **timing** of project construction, the composition and dimensions/quantities of **materials** that will be utilized for project implementation, any **equipment** that will be used, anticipated **ground disturbance** that will occur, wildlife surveys or observations that have occurred on or near the project site, and **any other relevant details** regarding potential effects of project activities on wildlife or wildlife habitat. **Photographs** of the project site are especially useful.

Although this project report may include management recommendations based on the project location, additional conservation measures may be needed. The Department can not fully assess potential effects and associated management recommendations until a **project type and description** have been submitted and an appropriate **impact buffer** for that project type has been applied. Also, the species list within this report represents an estimation of special status species that could be present at the site of a small-scale project. Species lists for projects that occur across **broader geographic scales** (e.g., one or more counties, multiple habitat types) are more appropriately obtained from the **Department's Biota Information System of New Mexico (BISON-M) database**. Species lists generated by the ERT may contain modeled species distributions in order to predict species occurrences within areas that lack previous wildlife inventories or surveys. This list can be refined using occurrence-based information within BISON-M regarding wildlife-habitat relationships and biological needs for species that might be present within the project footprint.

Your project could affect important components of habitat for large mammals, including important and sensitive seasonal areas, stopover sites, or movement corridors for elk (*Cervus canadensis*), mule deer (*Odocoileus hemionus*), or pronghorn (*Antilocapra americana americana*). Mitigation measures should be implemented as appropriate in these high use sites and movement areas that were identified based on data gathered and analyzed by the New Mexico Department of Wildlife (Department) and partners. Management recommendations within these areas may include the following (as relevant to the proposed project).

- Restrictions on noise-generating activities during wintering and calving/fawning seasons. These seasons are November 15-April 30 for wintering and May 15-June 30 for calving fawning in northern New Mexico; specific timing differs for southern New Mexico. These activities include oil and gas well pad development and operations that expose wildlife to loud noises from drilling, compressors, and pumping stations within 400 feet of the source.
- Avoid new fence construction where possible and modify unavoidable fences along high use areas to make them wildlife friendly and facilitate large animal movement. Where possible, divide larger fenced sites into smaller fenced areas with movement corridors in between.
- Avoid siting facilities within important habitats such as critical seasonal ranges or parturition sites.
- To minimize surface disturbance, implement directional drilling and co-locate drill holes on a single pad in the least suitable areas for wildlife.
- Avoid construction or development activities during important times, like parturition (May 15 – June 30 in northern New Mexico).
- Where feasible, coordinate with the Department on collection of pre- and post-construction observational or GPS collar data to quantify responses of big game herds to project implementation.

Burrowing owl (*Athene cunicularia*) may occur within your project area. Burrowing owls are protected from take by the Migratory Bird Treaty Act and under New Mexico state statute. Before any ground disturbing activities occur, the Department recommends that a preliminary burrowing owl survey be conducted by a qualified biologist using the Department's [Burrowing Owl Survey Protocol](#). Should burrowing owls be documented in the project area, please contact the Department or USFWS for further recommendations regarding relocation or avoidance of impacts.

Your project area intersects a Conservation Opportunity Area (COA) as identified in the [SWAP](#) for New Mexico. These areas contain high numbers of SGCN as identified in the SWAP and therefore represent areas where implementing conservation actions, including restoration projects intended to benefit wildlife, has higher potential to benefit a diversity of species. Within COAs, the Department encourages project proponents to consider (during project planning and design) and mitigate (during project implementation) potential adverse effects to non-federally listed SGCN and their habitats. State-listed and federally-listed species are protected from take by the New Mexico WCA and ESA, respectively, and migratory birds are protected from take by the Migratory Bird Treaty Act.

Your project area intersects designated critical habitat for one or more species that are listed under the federal ESA. The Department recommends that you confirm this using the USFWS's Information for Planning and Consultation (IPAC) system (<https://ipac.ecosphere.fws.gov/>) and then reach out to the appropriate species lead(s) with the [New Mexico Ecological Services Office of USFWS](#). The USFWS has authority to designate critical habitat for species listed under the ESA. The Department has no authority to designate critical habitat for species listed under the WCA or ESA. If there are any federally-listed plants within your project area and your project has a federal nexus, you may find these recommendations from the USFWS useful: [Recommendations for Endangered Species Act Section 7 Consultations Involving Plants in New Mexico; Standards for Conducting and Reporting Consultation Surveys for Federally-Listed, Proposed, and Candidate Plants in New Mexico](#).

Your proposed project intersects dunes sagebrush lizard (*Sceloporus arenicolus*) (DSL) habitat. The DSL is listed as Endangered under the ESA by the USFWS and as Endangered by the State of New Mexico under the New Mexico WCA. The Center of Excellence for Hazardous Materials Management ([CEHMM](#)) entered into an agreement with USFWS to work in cooperation with private landowners and industry to support conservation for the DSL while continuing to work on the land. If your project has potential to lead to take (including harassment, harm, pursuit, hunting, shooting, wounding, killing, trapping, capturing, collecting, or attempting to engage in these activities) of a DSL and you entered into the Candidate Conservation Agreement (CCA) or CCA with Assurances (CCAA) for the DSL with CEHMM, the Department recommends you contact CEHMM (575-885-3700). If your project may lead to take of a DSL and you did not enter the CCA/A with CEHMM, the Department recommends you contact Marilyn Wright, at 505-761-4715 or [marilyn\\_wright@fws.gov](mailto:marilyn_wright@fws.gov), who is the species lead for the DSL in the Ecological Services Office with USFWS. The Department recommends a qualified, permitted biologist conduct surveys for the DSL according to any survey protocol recommended by, and following any training required by, USFWS.

The proposed project occurs near an important bat area. This area may contain important bat roosting resources, such as caves or mines, that potentially could be affected by certain project activities. Follow the guidelines below to minimize disturbance to roosting bats.

- Avoid use of pesticides, firearms, open-flame torches, or heavy smoke-producing equipment, especially from April through September.
- If artificial lighting is needed, use only light sources powered by batteries, or cyalume glow/light sticks. Keep the site clean by picking up refuse or materials from project lighting or operations whenever they are shut down.
- If the use of permanent outdoor lights cannot be avoided, design all outdoor lighting in accordance with the New Mexico Night Sky Protection Act, which requires that outdoor lighting be fitted with shielding that directs light downward, rather than upward or laterally, to prevent sky glow and associated impacts to bats.
- For any surface disturbing activities, the project footprint (including a 350 foot buffer) should avoid potential roost sites such as caves or mines, especially from April through July. Tree clearing activities and prescribed burns should include a minimum 0.5 miles buffer from any such features.
- If caves, mines, bridges, or other man-made structure suitable as potential bat roosts are encountered within the project area, they should not be entered during any time of year, and no roosting or hibernating bats should be contacted or disturbed. Report any dead or injured bats to the Department, which can facilitate contacts with other appropriate personnel.

Your project area intersects an Important Plant Area (IPA) that contains one or more species of plants listed as threatened or endangered by the New Mexico Energy, Minerals and Natural Resources Department (EMNRD) under New Mexico Statutes Annotated (NMSA) 75-6-1 or by the USFWS under the federal ESA. Although IPAs have no legal designation, they have been identified as areas that support either a high diversity of sensitive plant species or contain the last remaining locations of New Mexico's most endangered plants. The Department recommends that you consult with EMNRD's [Endangered Plant Program Coordinator](#) regarding any state-listed plants and the USFWS's [Information for Planning and Consultation \(IPAC\)](#) system for any federally-listed plants and reaching out to the appropriate federal species lead(s) with the [New Mexico Ecological Services Office of USFWS](#). The Department does not have any authority to designate or advise on state- or federally-listed plants.

Our preliminary assessment indicates your project occurs in Lesser Prairie-chicken Crucial Habitat Category 1 (Focal Area).

The Lesser Prairie-chicken (*Tympanuchus pallidicinctus*) (LPC) was designated as a SGCN in New Mexico and previously the southern Distinct Population Segment, including populations in New Mexico and Texas, was federally listed as Endangered. The LPC Interstate Working Group has developed the Southern Great Plains Crucial Habitat Assessment Tool ([SGP-CHAT](#)) to designate and prioritize areas for LPC conservation activities and development. Our preliminary assessment indicates your project occurs in LPC habitat. For more information on the SGP-CHAT, contact Chanda Pettie, Industry LPC Program Contact with the Western Association of Fish and Wildlife Agencies, at (719) 207-5053 or [chanda.pettie@wafwa.org](mailto:chanda.pettie@wafwa.org).

If your project has potential to lead to take (including harassment, harm, pursuit, hunting, shooting, wounding, killing, trapping, capturing, collecting, or attempting to engage in these activities) of a LPC and you entered into the Candidate Conservation Agreement (CCA) or CCA with Assurances (CCAA) for the LPC with [CEHMM](#), the Department recommends you contact CEHMM (575-885-3700). If your project may lead to take of a LPC and you did not enter the CCA/A with CEHMM, the Department recommends a qualified, permitted biologist conduct surveys for the LPC according to these [Lesser Prairie-chicken Survey Protocols](#) and mitigating the effects of project activities by buffering (>1.25 miles of known leks) and avoiding construction or off-road activities during the breeding season (March 1-July 15).

The proposed project occurs near a playa. Playas are shallow, ephemeral wetlands that fill in response to precipitation. Some playas remain wet for just a few weeks or months, while others remain wet for years. Playas are often highly productive habitats that attract abundant wildlife and are vital to continentally important populations of waterfowl, shorebirds, waterbirds, and many other migratory and resident birds.

- To ensure continued function of these important wildlife habitats, the project footprint should completely avoid the playa feature during both wet *and* dry periods. Some playas may remain dry for multiple years. Construction techniques should not disturb the natural playa soils or hydrology, such as by farming, trenching, pitting, or draining.
- Projects occurring in upland areas near a playa should maintain a minimum 40-meter wide buffer around the entire playa. A buffer of 40 meters protects the playa from excess sedimentation, which is a major source of playa degradation. The buffer should consist of native grass species, preferably native shortgrass prairie species such as buffalo grass (*Bouteloua dactyloides*) or blue grama (*Bouteloua gracilis*).
- Because playas are bird concentration areas, tall structures should be located as far away from the playa as possible to prevent avian collisions. If location near a playa is deemed necessary, the Department requests the opportunity for additional consultation.
- Design considerations should also include clustering project activity and development within the project footprint wherever possible and avoiding disturbances that lead to increases in noise, lighting, perturbed soil and non-native vegetation, or other activity.

Prairie dog colonies may occur within the vicinity of your project area. Both black-tailed prairie dogs (*Cynomys ludovicianus*) and Gunnison's prairie dogs (*Cynomys gunnisoni*) are designated as New Mexico SGCN, and their colonies provide important habitat for other grassland wildlife. Wherever possible, occupied prairie dog colonies should be left undisturbed, and all project activities should be directed off the colony. Any burrows that are located on the project site should be surveyed by a qualified biologist to determine whether burrows are active or inactive and whether burrowing owls may be utilizing the site. Colonies within the range of the black-tailed prairie dog can be surveyed by a qualified biologist diurnally, year-round using binoculars. Colonies within the range of the Gunnison's prairie dog can be surveyed by a qualified biologist diurnally, using binoculars during the warmer months from April through October and by searching for fairly fresh scat and lack of cobwebs or debris at the mouths of burrows during the cold months (November through March). If ground-disturbing activities cannot be relocated off the prairie dog colony, or if project activities involve control of prairie dogs, the Department recommends live-trapping and relocation of prairie dogs. The Department can provide recommendations regarding suitability of potential translocation areas and procedures.

The proposed project occurs within or near a riparian area. Because riparian areas are important wildlife habitats, the project footprint should avoid removing any riparian vegetation or creating ground disturbance either directly within or affecting the riparian area, unless the project is intended to restore riparian habitat through non-native plant removal and replanting with native species. If your project involves removal of non-native riparian trees or planting of native riparian vegetation, please refer to the Department's habitat handbook guideline for [Restoration and Management of Native and Non-native Trees in Southwestern Riparian Ecosystems](#). The [New Mexico Riparian Habitat Map \(NMRipMap\)](#) may also provide useful information on local riparian habitat composition and structure.

Your proposed project occurs within an area where springs or other important natural water features occur. This may result in the presence of a high use area for wildlife relative to the surrounding landscape. To ensure continued function of these important wildlife habitats, your project should consider measures to avoid the following.

- Altering surface or groundwater flow or hydrology,
- Disturbance to soil that modifies geomorphic properties or facilitates invasion of non-native vegetation.
- Affecting local surface or groundwater quality.
- Creating disturbance to wildlife utilizing these water features. Disturbance to wildlife can be reduced through practices including clustering infrastructure and activity wherever possible, avoiding large visual obstructions around water features, and limiting nighttime project operations or activities.

Department biologists are available for site-specific consultation regarding measures to assist with management and conservation of these habitat resources.

The current project area appears to contain one or more wetland types as classified by the New Mexico Environment Department's [Wetland Map](#). Information on wetlands in your project area can also be viewed on the ERT's [Create Project/Map](#) page. This [key](#) can assist in interpreting Landscape Position, landform, water flow path, and waterbody type (LLWW) codes in the ERT's wetland data. Wetlands provide important habitat for numerous species of wildlife and pollinators and provide ecosystem services, such as water filtration and storage, to downstream users. The Department recommends avoiding disturbance of wetlands whenever possible, avoiding actions or infrastructure installment that may disrupt natural wetland hydrological processes, and reseeding or replanting areas where disturbance cannot be avoided with native wetland plant species appropriate to the local wetland type. For a list of native seed providers, please see the Department's habitat handbook guideline for [Restoration and Management of Native and Non-native Trees in Southwestern Riparian Ecosystems](#). For projects involving filling wetlands under federal jurisdiction, please contact the [Army Corps of Engineers](#) for more information on permits required under the Clean Water Act.

**Disclaimers regarding recommendations:**

- The Department provides technical guidance to support the persistence of all protected species of native fish and wildlife, including game and nongame wildlife species. Species listed within this report include those that have been documented to occur within the project area, and others that may not have been documented but are projected to occur within the project vicinity.
- Recommendations are provided by the Department under the authority of § 17-1-5.1 New Mexico Statutes Annotated 1978, to provide "communication and consultation with federal and other state agencies, local governments and communities, private organizations and affected interests responsible for habitat, wilderness, recreation, water quality and environmental protection to ensure comprehensive conservation services for hunters, anglers and nonconsumptive wildlife users".
- The Department has no authority for management of plants or Important Plant Areas. The [New Mexico Endangered Plant Program](#), under the Energy, Minerals, and Natural Resources Department's Forestry Division, identifies and develops conservation measures necessary to ensure the survival of plant species within New Mexico. Plant status information is provided within this report as a courtesy to users. Recommendations provided within the ERT may not be sufficient to preclude impacts to rare or sensitive plants, unless conservation measures are identified in coordination with the Endangered Plant Program.
- Additional coordination and/or consultation may also be necessary under the federal ESA or National Environmental Policy Act (NEPA). Further site-specific mitigation recommendations may be proposed during ESA consultation and/or NEPA analyses or through coordination with affected federal agencies.
- Unless a project is marked as confidential in the title or description by the project proponent and if a ERT-generated report is the only response that the project proponent receives from the Department, then the report will be made publicly accessible via the [Public Comment Letters](#) page on the ERT website.