



---

## PROJECT INFORMATION

---

**Project Title:** Husky to Gambler  
**Project Type:** ENDANGERED SPECIES  
**Latitude/Longitude (DMS):** 32.333641 / -103.816688  
**County(s):** EDDY  
**Project Description:** Proposed Pipeline

## REQUESTOR INFORMATION

---

**Project Organization:**  
**Contact Name:** Jesse Young  
**Email Address:** jyoung@trccompanies.com  
**Organization:** TRC Companies, Inc.  
**Address:** 6501 Eagle Rock Ave. NE, Suite B5, Albuquerque NM 87113  
**Phone:** 5055540779

## OVERALL STATUS

---

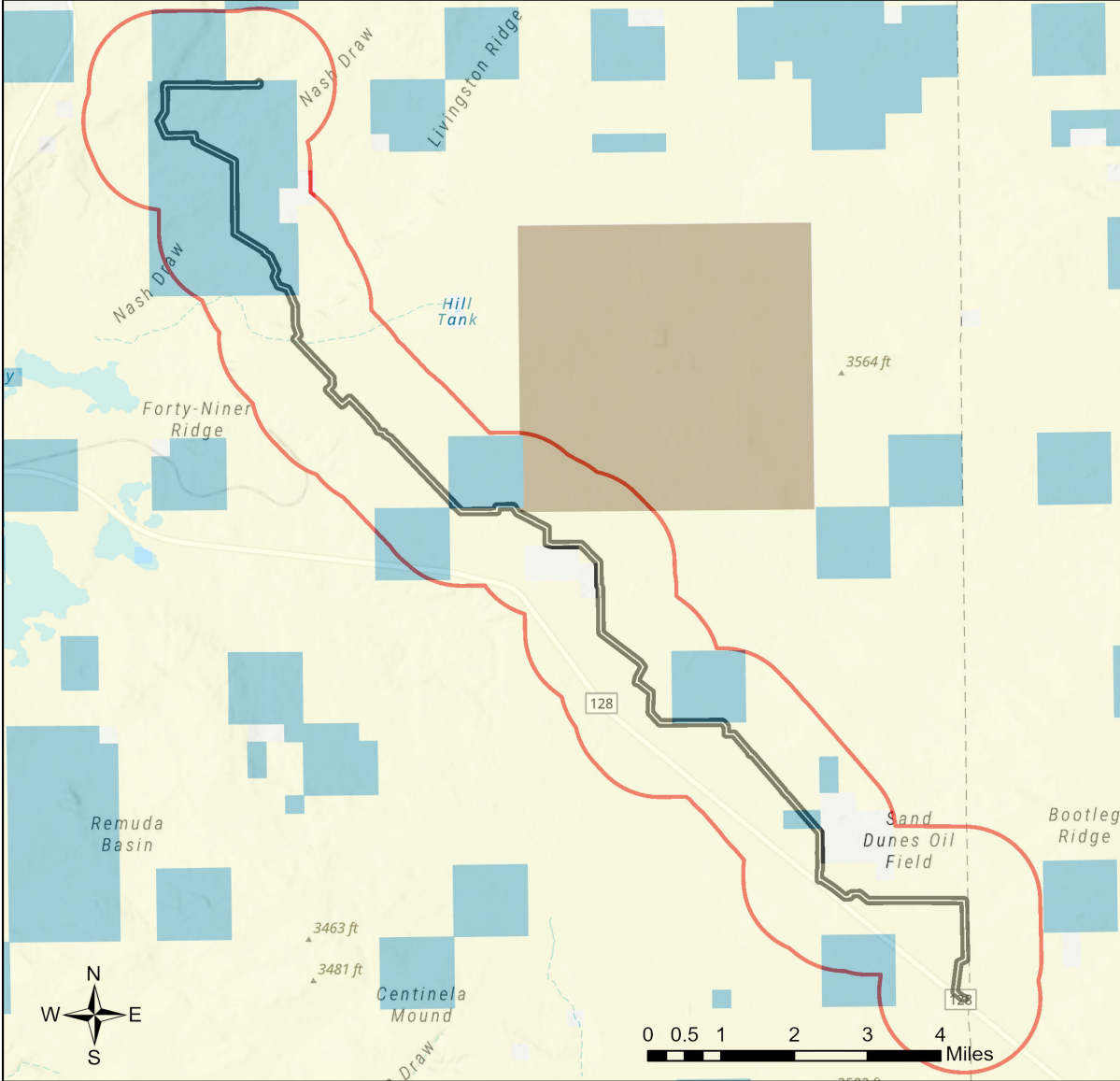
This report contains an initial list of recommendations regarding potential impacts to wildlife or wildlife habitats from the proposed project; see the Project Recommendations section below for further details. Your project proposal is being forwarded to a New Mexico Department of Wildlife (Department) biologist for review to determine whether there are any additional recommendations regarding the proposed actions. A Department biologist will be in touch within 30 days if there are further recommendations regarding this project proposal.

---

**About this report:**

- This environmental review is based on the project description and location that was entered. The report must be updated if the project type, area, or operational components are modified.
- This is a preliminary environmental screening assessment and report. It is not a substitute for the potential wildlife knowledge gained by having a biologist conduct a field survey of the project area. Federal status and plant data are provided as a courtesy to users. The review is also not intended to replace consultation required under the federal Endangered Species Act (ESA), including impact analyses for federal resources from the U.S. Fish and Wildlife Service (USFWS) using their [Information for Planning and Consultation tool](#).
- This report contains information on wildlife species protected under the ESA and the [Wildlife Conservation Act \(WCA\)](#), [Species of Greatest Conservation Need \(SGCN\)](#) (page 18, table 5), and Species of Economic and Recreational Importance (SERI). Species listed under the ESA are protected from take at the federal level and under the WCA are protected from take at the state level. SGCN are identified in the [State Wildlife Action Plan \(SWAP\) for New Mexico](#); all of these species are considered to be of conservation concern but not all of them are protected from take at the state or federal level. The harvest of all SERI is regulated at the state level. The Department has no authority to designate critical habitat for species listed under the WCA; only the USFWS can designate critical habitat for species listed under the ESA.
- The New Mexico Environmental Review Tool (ERT) utilizes species observation locations and species habitat suitability models, both of which are subject to ongoing change and refinement. Inclusion or omission of a species within a report cannot guarantee species presence or absence within your project area. To determine occurrence of any species listed in this report, or other wildlife that may be present within your project area, onsite surveys conducted by a qualified biologist during appropriate, species-specific survey timelines may be necessary.
- The Department encourages use of the ERT to modify proposed projects for avoidance, minimization, or mitigation of wildlife impacts. However, the ERT is not intended to be used in a repeatedly iterative fashion to adjust project attributes until a previously determined recommendation is generated. The ERT serves to assess impacts once project details are developed. The [New Mexico Crucial Habitat Assessment Tool](#), the data layers from which are included in the ERT, is the appropriate system for advising early-stage project planning and design to avoid areas of anticipated wildlife concerns and associated regulatory requirements.

# Husky to Gambler



- |                           |                              |   |
|---------------------------|------------------------------|---|
| Buffered Project Boundary | NM Department of Game & Fish | U.S. Army Corps of Engineers                |
| Project_Boundary          | NM State Forestry Division   | U.S. Bureau of Reclamation                  |
| Bureau of Land Management | NM State Parks               | U.S. Department of Agriculture              |
| City Land                 | Other Federal Agency         | U.S. Fish and Wildlife Service              |
| County Land               | Other Federal Agency         | U.S. Forest Service                         |
| Department of Defense     | State Land Office            | U.S. Natural Resources Conservation Service |
| Department of Energy      | State of New Mexico          |   |
| National Park Service     | Tribal Land                  |   |

NHNM, USGS, USFS, US Census Bureau, NMDGF  
 Esri, NASA, NGA, USGS  
 Texas Parks & Wildlife, CONANP, Esri, TomTom, Garmin, SafeGraph, GeoTechnologies, Inc, METI/NASA, USGS, EPA, NPS, USDA, USFWS

**Special Status Animal Species Potentially within 1 Miles of Project Area**

Common Name	Scientific Name	USFWS (ESA)	NMDGF (WCA)	NMDGF SGCN/SERI	USFS	USFS SCC	BLM
<a href="#">Boreal Chorus Frog</a>	<a href="#">Pseudacris maculata</a>			SGCN			
<a href="#">Barking Frog</a>	<a href="#">Craugastor augusti</a>			SGCN			
<a href="#">Plains Leopard Frog</a>	<a href="#">Lithobates blairi</a>			SGCN			BLM WATCH
<a href="#">Clark's Grebe</a>	<a href="#">Aechmophorus clarkii</a>			SGCN			
<a href="#">American Bittern</a>	<a href="#">Botaurus lentiginosus</a>			SGCN			BLM WATCH
<a href="#">Bald Eagle</a>	<a href="#">Haliaeetus leucocephalus</a>		T	SGCN	Sensitive Species		BLM SENSITIVE
<a href="#">Harris's Hawk</a>	<a href="#">Parabuteo unicinctus</a>			SGCN 2025			
<a href="#">Aplomado Falcon</a>	<a href="#">Falco femoralis</a>		E	SGCN			
<a href="#">Peregrine Falcon</a>	<a href="#">Falco peregrinus</a>		T	SGCN			BLM WATCH
<a href="#">Snowy Plover</a>	<a href="#">Anarhynchus nivosus nivosus</a>			SGCN			
<a href="#">Elf Owl</a>	<a href="#">Micrathene whitneyi</a>			SGCN			BLM WATCH
<a href="#">Western Burrowing Owl</a>	<a href="#">Athene cucularia hypugaea</a>			SGCN	Sensitive Species	USFS R3 SCC	BLM SENSITIVE
<a href="#">Common Nighthawk</a>	<a href="#">Chordeiles minor</a>			SGCN			
<a href="#">Lewis's Woodpecker</a>	<a href="#">Melanerpes lewis</a>			SGCN		USFS R3 SCC	BLM WATCH
<a href="#">Bank Swallow</a>	<a href="#">Riparia riparia</a>			SGCN			
<a href="#">Pinyon Jay</a>	<a href="#">Gymnorhinus cyanocephalus</a>			SGCN		USFS R3 SCC	BLM SENSITIVE
<a href="#">Pygmy Nuthatch</a>	<a href="#">Sitta pygmaea</a>			SGCN			
<a href="#">Sprague's Pipit</a>	<a href="#">Anthus spragueii</a>			SGCN			BLM SENSITIVE
<a href="#">Loggerhead Shrike</a>	<a href="#">Lanius ludovicianus</a>			SGCN		USFS R3 SCC	BLM WATCH
<a href="#">Bell's Vireo</a>	<a href="#">Vireo bellii</a>		T	SGCN			BLM SENSITIVE
<a href="#">Black-Throated Gray Warbler</a>	<a href="#">Setophaga nigrescens</a>			SGCN			BLM WATCH
<a href="#">Varied Bunting</a>	<a href="#">Passerina versicolor</a>		T	SGCN	Sensitive Species		
<a href="#">Vesper Sparrow</a>	<a href="#">Poocetes gramineus</a>			SGCN			

**Special Status Animal Species Potentially within 1 Miles of Project Area**

Common Name	Scientific Name	USFWS (ESA)	NMDGF (WCA)	NMDGF SGCN/SERI	USFS	USFS SCC	BLM
<a href="#">Thick-billed Longspur</a>	<a href="#">Rhynchophanes mccownii</a>			SGCN			BLM SENSITIVE
<a href="#">Chestnut-Collared Longspur</a>	<a href="#">Calcarius ornatus</a>			SGCN			BLM SENSITIVE
<a href="#">Least Shrew</a>	<a href="#">Cryptotis parva</a>		T	SGCN			BLM WATCH
<a href="#">Spotted Bat</a>	<a href="#">Euderma maculatum</a>		T	SGCN	Sensitive Species	USFS R3 SCC	BLM SENSITIVE
<a href="#">Black-Tailed Prairie Dog</a>	<a href="#">Cynomys ludovicianus</a>			SGCN	Sensitive Species		BLM SENSITIVE
<a href="#">Mule Deer</a>	<a href="#">Odocoileus hemionus</a>			SERI			
<a href="#">Pronghorn</a>	<a href="#">Antilocapra americana</a>			SERI			
<a href="#">Western River Cooter</a>	<a href="#">Pseudemys gorzugi</a>		T	SGCN			BLM SENSITIVE
<a href="#">Dunes Sagebrush Lizard</a>	<a href="#">Sceloporus arenicolus</a>	LE	E	SGCN			
<a href="#">Plainbelly Water Snake</a>	<a href="#">Nerodia erythrogaster</a>		E	SGCN			
<a href="#">Western Ribbon Snake</a>	<a href="#">Thamnophis proximus</a>		T	SGCN	Sensitive Species		
<a href="#">Desert Massasauga</a>	<a href="#">Sistrurus catenatus edwardsii</a>			SGCN			

Common Name hyperlink takes you to species account in [bison-m.org](http://bison-m.org); Scientific Name hyperlink takes you to information in [NatureServe Explorer](#); ESA = Endangered Species Act, C = Candidate, LE = Listed Endangered, LT = Listed Threatened, XN = Non-essential Experimental Population, for other ESA codes see this [website](#); WCA = Wildlife Conservation Act, E = Endangered, T = Threatened; SERI = Species of Economic and Recreational Importance; SGCN = Species of Greatest Conservation Need; USFS = U.S. Forest Service, Sensitive Species = A species likely to occur on USFS lands that is of concern for a potential reduction in population viability; SCC = Species of Conservation Concern; BLM = Bureau of Land Management, BLM SENSITIVE = A species that occurs on BLM lands and whose viability is at risk, BLM WATCH = Species that may be added to the sensitive species list in future pending new information regarding species status.

**Special Status Plant Species Potentially within 1 Miles of Project Area**

Common Name	Scientific Name	USFWS (ESA)	NMAC	NMRPCS	USFS	USFS SCC	BLM
<a href="#">Wright's Water-Willow</a>	<a href="#">Justicia wrightii</a>						BLM SENSITIVE
<a href="#">Tharp's Blue Star</a>	<a href="#">Amsonia tharpii</a>		E				BLM SENSITIVE
<a href="#">Scheer's Pincushion Cactus</a>	<a href="#">Coryphantha robustispina ssp. scheeri</a>		E				BLM SENSITIVE

**Special Status Plant Species Potentially within 1 Miles of Project Area**

Common Name	Scientific Name	USFWS (ESA)	NMAC	NMRPCS	USFS	USFS SCC	BLM
<a href="#">Gyp Ground Plum</a>	<a href="#">Astragalus gypsodes</a>						BLM SENSITIVE

NMAC = New Mexico Administrative Code, E = Endangered; NMRPCS = [New Mexico Rare Plant Conservation Strategy](#), SS = NM Rare Plant Conservation Strategy Species; USFS = U.S. Forest Service, Sensitive Species = A species likely to occur on USFS lands that is of concern for a potential reduction in population viability; SCC = Species of Conservation Concern; BLM = Bureau of Land Management, BLM SENSITIVE = A species that occurs on BLM lands and whose viability is at risk, BLM WATCH = Species that may be added to the sensitive species list in future pending new information regarding species status.

## Project Recommendations

Your proposed project activities may require a custom review for assessment of potential effects to wildlife. See the "OVERALL STATUS" section above to determine the likelihood that your project will be reviewed further based on its location. A Department biologist will confirm whether any additional conservation measures are needed. You should expect to receive any additional project recommendations within 30 days of your project submission. If the "OVERALL STATUS" section indicates that no further consultation with the Department is required based on its location, then you will only receive additional project feedback from the Department if a biologist deems it necessary.

The highly invasive, noxious weed African rue (*Peganum harmala*) has been documented near the proposed project area. African rue thrives on disturbed sites and along road sides. It is extremely drought-tolerant and will undergo rapid vegetative growth when soil moisture is available. African rue is extremely toxic to horses, sheep, cattle, and humans, containing at least four types of poisonous alkaloids. In addition, most parts of the plant contain allelopathic chemicals that will reduce the growth of surrounding native plants. To help control this species' spread, the Department recommends that any vehicles and equipment arriving on the project site be thoroughly cleaned of all visible dirt and mud to help contain and control the potential spread of weed seeds. The operator should also initiate a weed management program that includes a commitment to aggressive control of any African rue on the project site. For more information on potential control of African rue, see this [field guide](#).

Burrowing owl (*Athene cunicularia*) may occur within your project area. Burrowing owls are protected from take by the Migratory Bird Treaty Act and under New Mexico state statute. Before any ground disturbing activities occur, the Department recommends that a preliminary burrowing owl survey be conducted by a qualified biologist using the Department's [Burrowing Owl Survey Protocol](#). Should burrowing owls be documented in the project area, please contact the Department or USFWS for further recommendations regarding relocation or avoidance of impacts.

Your project area intersects an Important Plant Area (IPA) that contains one or more species of plants listed as threatened or endangered by the New Mexico Energy, Minerals and Natural Resources Department (EMNRD) under New Mexico Statutes Annotated (NMSA) 75-6-1 or by the USFWS under the federal ESA. Although IPAs have no legal designation, they have been identified as areas that support either a high diversity of sensitive plant species or contain the last remaining locations of New Mexico's most endangered plants. The Department recommends that you consult with EMNRD's [Endangered Plant Program Coordinator](#) regarding any state-listed plants and the USFWS's [Information for Planning and Consultation \(IPAC\)](#) system for any federally-listed plants and reaching out to the appropriate federal species lead(s) with the [New Mexico Ecological Services Office of USFWS](#). The Department does not have any authority to designate or advise on state- or federally-listed plants.

Our preliminary assessment indicates your project occurs in Lesser Prairie-chicken Crucial Habitat Category 1 (Focal Area).

The Lesser Prairie-chicken (*Tympanuchus pallidicinctus*) (LPC) was designated as a SGCN in New Mexico and previously the southern Distinct Population Segment, including populations in New Mexico and Texas, was federally listed as Endangered. The LPC Interstate Working Group has developed the Southern Great Plains Crucial Habitat Assessment Tool ([SGP-CHAT](#)) to designate and prioritize areas for LPC conservation activities and development. Our preliminary assessment indicates your project occurs in LPC habitat. For more information on the SGP-CHAT, contact Chanda Pettie, Industry LPC Program Contact with the Western Association of Fish and Wildlife Agencies, at (719) 207-5053 or [chanda.pettie@wafwa.org](mailto:chanda.pettie@wafwa.org).

If your project has potential to lead to take (including harassment, harm, pursuit, hunting, shooting, wounding, killing, trapping, capturing, collecting, or attempting to engage in these activities) of a LPC and you entered into the Candidate Conservation Agreement (CCA) or CCA with Assurances (CCAA) for the LPC with [CEHMM](#), the Department recommends you contact CEHMM (575-885-3700). If your project may lead to take of a LPC and you did not enter the CCA/A with CEHMM, the Department recommends a qualified, permitted biologist conduct surveys for the LPC according to these [Lesser Prairie-chicken Survey Protocols](#) and mitigating the effects of project activities by buffering (>1.25 miles of known leks) and avoiding construction or off-road activities during the breeding season (March 1-July 15).

Prairie dog colonies may occur within the vicinity of your project area. Both black-tailed prairie dogs (*Cynomys ludovicianus*) and Gunnison's prairie dogs (*Cynomys gunnisoni*) are designated as New Mexico SGCN, and their colonies provide important habitat for other grassland wildlife. Wherever possible, occupied prairie dog colonies should be left undisturbed, and all project activities should be directed off the colony. Any burrows that are located on the project site should be surveyed by a qualified biologist to determine whether burrows are active or inactive and whether burrowing owls may be utilizing the site. Colonies within the range of the black-tailed prairie dog can be surveyed by a qualified biologist diurnally, year-round using binoculars. Colonies within the range of the Gunnison's prairie dog can be surveyed by a qualified biologist diurnally, using binoculars during the warmer months from April through October and by searching for fairly fresh scat and lack of cobwebs or debris at the mouths of burrows during the cold months (November through March). If ground-disturbing activities cannot be relocated off the prairie dog colony, or if project activities involve control of prairie dogs, the Department recommends live-trapping and relocation of prairie dogs. The Department can provide recommendations regarding suitability of potential translocation areas and procedures.

The current project area appears to contain one or more wetland types as classified by the New Mexico Environment Department's [Wetland Map](#). Information on wetlands in your project area can also be viewed on the ERT's [Create Project/Map](#) page. This [key](#) can assist in interpreting Landscape Position, landform, water flow path, and waterbody type (LLWW) codes in the ERT's wetland data. Wetlands provide important habitat for numerous species of wildlife and pollinators and provide ecosystem services, such as water filtration and storage, to downstream users. The Department recommends avoiding disturbance of wetlands whenever possible, avoiding actions or infrastructure installment that may disrupt natural wetland hydrological processes, and reseeding or replanting areas where disturbance cannot be avoided with native wetland plant species appropriate to the local wetland type. For a list of native seed providers, please see the Department's habitat handbook guideline for [Restoration and Management of Native and Non-native Trees in Southwestern Riparian Ecosystems](#). For projects involving filling wetlands under federal jurisdiction, please contact the [Army Corps of Engineers](#) for more information on permits required under the Clean Water Act.

**Disclaimers regarding recommendations:**

- The Department provides technical guidance to support the persistence of all protected species of native fish and wildlife, including game and nongame wildlife species. Species listed within this report include those that have been documented to occur within the project area, and others that may not have been documented but are projected to occur within the project vicinity.
- Recommendations are provided by the Department under the authority of § 17-1-5.1 New Mexico Statutes Annotated 1978, to provide "communication and consultation with federal and other state agencies, local governments and communities, private organizations and affected interests responsible for habitat, wilderness, recreation, water quality and environmental protection to ensure comprehensive conservation services for hunters, anglers and nonconsumptive wildlife users".
- The Department has no authority for management of plants or Important Plant Areas. The [New Mexico Endangered Plant Program](#), under the Energy, Minerals, and Natural Resources Department's Forestry Division, identifies and develops conservation measures necessary to ensure the survival of plant species within New Mexico. Plant status information is provided within this report as a courtesy to users. Recommendations provided within the ERT may not be sufficient to preclude impacts to rare or sensitive plants, unless conservation measures are identified in coordination with the Endangered Plant Program.
- Additional coordination and/or consultation may also be necessary under the federal ESA or National Environmental Policy Act (NEPA). Further site-specific mitigation recommendations may be proposed during ESA consultation and/or NEPA analyses or through coordination with affected federal agencies.
- Unless a project is marked as confidential in the title or description by the project proponent and if a ERT-generated report is the only response that the project proponent receives from the Department, then the report will be made publicly accessible via the [Public Comment Letters](#) page on the ERT website.