



PROJECT INFORMATION

Project Title: Acoma Pueblo
Project Type: (NO PROJECT REVIEW) SPECIES LIST ONLY
Latitude/Longitude (DMS): 35.072821 / -107.682273
County(s): CIBOLA
Project Description: At this time, I do not have a project description available. Details are currently unavailable, but I will provide information as soon as it becomes accessible. As of now, no specific project description exists, but updates will be shared when possible. Thank you for your patience.

REQUESTOR INFORMATION

Project Organization:
Contact Name: Gerald Berthelette
Email Address: gberthelette@sonoranlandresources.com
Organization: Sonoran Land Resources, LLC
Address: 8750 E Speedway Blvd., Suite 230, Tucson AZ 85716
Phone: 5209891096

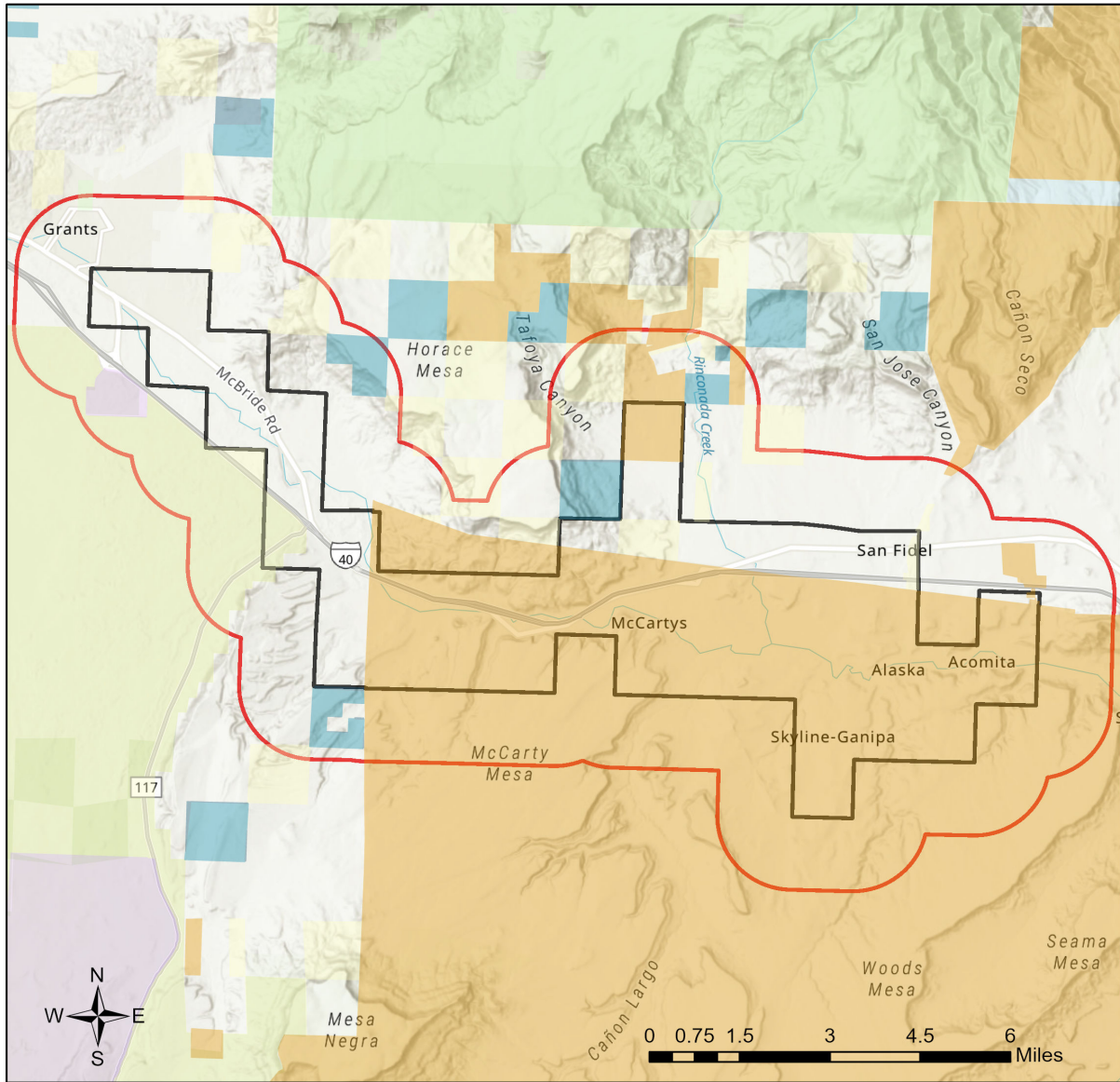
OVERALL STATUS

This report contains an initial list of recommendations regarding potential impacts to wildlife or wildlife habitats from the proposed project; see the Project Recommendations section below for further details. Your project proposal is being forwarded to a New Mexico Department of Game and Fish (Department) biologist for review to determine whether there are any additional recommendations regarding the proposed actions. A Department biologist will be in touch within 30 days if there are further recommendations regarding this project proposal.

About this report:

- This environmental review is based on the project description and location that was entered. The report must be updated if the project type, area, or operational components are modified.
- This is a preliminary environmental screening assessment and report. It is not a substitute for the potential wildlife knowledge gained by having a biologist conduct a field survey of the project area. Federal status and plant data are provided as a courtesy to users. The review is also not intended to replace consultation required under the federal Endangered Species Act (ESA), including impact analyses for federal resources from the U.S. Fish and Wildlife Service (USFWS) using their [Information for Planning and Consultation tool](#).
- This report contains information on wildlife species protected under the ESA and the [Wildlife Conservation Act \(WCA\)](#), [Species of Greatest Conservation Need \(SGCN\)](#), and Species of Economic and Recreational Importance (SERI). Species listed under the ESA are protected from take at the federal level and under the WCA are protected from take at the state level. SGCN are identified in the [State Wildlife Action Plan \(SWAP\) for New Mexico](#); all of these species are considered to be of conservation concern but not all of them are protected from take at the state or federal level. The harvest of all SERI is regulated at the state level. The Department has no authority to designate critical habitat for species listed under the WCA; only the USFWS can designate critical habitat for species listed under the ESA.
- The New Mexico Environmental Review Tool (ERT) utilizes species observation locations and species habitat suitability models, both of which are subject to ongoing change and refinement. Inclusion or omission of a species within a report cannot guarantee species presence or absence within your project area. To determine occurrence of any species listed in this report, or other wildlife that may be present within your project area, onsite surveys conducted by a qualified biologist during appropriate, species-specific survey timelines may be necessary.
- The Department encourages use of the ERT to modify proposed projects for avoidance, minimization, or mitigation of wildlife impacts. However, the ERT is not intended to be used in a repeatedly iterative fashion to adjust project attributes until a previously determined recommendation is generated. The ERT serves to assess impacts once project details are developed. The [New Mexico Crucial Habitat Assessment Tool](#), the data layers from which are included in the ERT, is the appropriate system for advising early-stage project planning and design to avoid areas of anticipated wildlife concerns and associated regulatory requirements.

Acoma Pueblo



- | | | |
|------------------------------|----------------------------|---|
| Buffered Project Boundary | NM State Forestry Division | U.S. Army Corps of Engineers |
| Project_Boundary | NM State Parks | U.S. Bureau of Reclamation |
| Bureau of Land Management | National Park Service | U.S. Department of Agriculture |
| City Land | Other Federal Agency | U.S. Fish and Wildlife Service |
| County Land | Other Federal Agency | U.S. Forest Service |
| Department of Defense | State Land Office | U.S. Natural Resources Conservation Service |
| Department of Energy | State of New Mexico | |
| NM Department of Game & Fish | Tribal Land | |

NHNM, USGS, USFS, US Census Bureau, NMDGF
 Esri, TomTom, Garmin, SafeGraph, METI/NASA, USGS, Bureau of Land Management, EPA, NPS, USDA, USFWS
 Esri, CGIAR, USGS

Special Status Animal Species Potentially within 2000 Meters of Project Area

Common Name	Scientific Name	USFWS (ESA)	NMDGF (WCA)	NMDGF SGCN/SERI	USFS	USFS SCC	BLM
Mountain Treefrog	Hyla wrightorum			SGCN			
Boreal Chorus Frog	Pseudacris maculata			SGCN			
Northern Leopard Frog	Lithobates pipiens			SGCN	Sensitive Species	USFS R3 SCC	BLM SENSITIVE
Eared Grebe	Podiceps nigricollis			SGCN			
Clark's Grebe	Aechmophorus clarkii			SGCN			
American Bittern	Botaurus lentiginosus			SGCN			BLM WATCH
Bald Eagle	Haliaeetus leucocephalus		T	SGCN	Sensitive Species		BLM SENSITIVE
Peregrine Falcon	Falco peregrinus		T	SGCN			BLM WATCH
Mountain Plover	Charadrius montanus			SGCN	Sensitive Species		BLM WATCH
Long-Billed Curlew	Numenius americanus			SGCN			BLM WATCH
Yellow-Billed Cuckoo	Coccyzus americanus	LT		SGCN			
Flammulated Owl	Otus flammeolus			SGCN			BLM WATCH
Western Burrowing Owl	Athene cucularia hypugaea			SGCN	Sensitive Species	USFS R3 SCC	BLM SENSITIVE
Mexican Spotted Owl	Strix occidentalis lucida	LT		SGCN			
Common Nighthawk	Chordeiles minor			SGCN			
Lewis's Woodpecker	Melanerpes lewis			SGCN		USFS R3 SCC	BLM WATCH
Williamson's Sapsucker	Sphyrapicus thyroideus			SGCN			
Olive-Sided Flycatcher	Contopus cooperi			SGCN			
Bank Swallow	Riparia riparia			SGCN			
Pinyon Jay	Gymnorhinus cyanocephalus			SGCN		USFS R3 SCC	BLM SENSITIVE
Clark's Nutcracker	Nucifraga columbiana			SGCN			
Juniper Titmouse	Baeolophus ridgwayi			SGCN		USFS R3 SCC	BLM WATCH
Pygmy Nuthatch	Sitta pygmaea			SGCN			
Western Bluebird	Sialia mexicana			SGCN			

Special Status Animal Species Potentially within 2000 Meters of Project Area

Common Name	Scientific Name	USFWS (ESA)	NMDGF (WCA)	NMDGF SGCN/SERI	USFS	USFS SCC	BLM
Mountain Bluebird	Sialia currucoides			SGCN			
Loggerhead Shrike	Lanius ludovicianus			SGCN		USFS R3 SCC	BLM WATCH
Gray Vireo	Vireo vicinior		T	SGCN	Sensitive Species	USFS R3 SCC	BLM WATCH
Virginia's Warbler	Leiothlypis virginiae			SGCN			BLM SENSITIVE
Black-Throated Gray Warbler	Setophaga nigrescens			SGCN			BLM WATCH
Grace's Warbler	Setophaga graciae			SGCN		USFS R3 SCC	BLM WATCH
Black-Chinned Sparrow	Spizella atrogularis			SGCN			BLM WATCH
Vesper Sparrow	Poocetes gramineus			SGCN			
Chestnut-Collared Longspur	Calcarius ornatus			SGCN			BLM SENSITIVE
Cassin's Finch	Haemorhous cassinii			SGCN			BLM WATCH
Evening Grosbeak	Coccothraustes vespertinus			SGCN			
Brook Trout	Salvelinus fontinalis			SERI			
Spotted Bat	Euderma maculatum		T	SGCN	Sensitive Species	USFS R3 SCC	BLM SENSITIVE
Pale Townsend's Big-Eared Bat	Corynorhinus townsendii pallescens			SGCN	Sensitive Species	USFS R3 SCC	BLM SENSITIVE
Gunnison's Prairie Dog	Cynomys gunnisoni			SGCN	Sensitive Species		BLM SENSITIVE
Mexican Wolf	Canis lupus baileyi	LE,XN	E	SGCN			
Black Bear	Ursus americanus			SGCN			
Mountain Lion	Puma concolor			SGCN			
Elk	Cervus canadensis			SGCN			
Mule Deer	Odocoileus hemionus			SGCN			

Common Name hyperlink takes you to species account in bison-m.org; Scientific Name hyperlink takes you to information in [NatureServe Explorer](#); ESA = Endangered Species Act, C = Candidate, LE = Listed Endangered, LT = Listed Threatened, XN = Non-essential Experimental Population, for other ESA codes see this [website](#); WCA = Wildlife Conservation Act, E = Endangered, T = Threatened; SERI = Species of Economic and Recreational Importance; SGCN = Species of Greatest Conservation Need; USFS = U.S. Forest Service, Sensitive Species = A species likely to occur on USFS lands that is of concern for a potential reduction in population viability; SCC = Species of Conservation

Concern; BLM = Bureau of Land Management, BLM SENSITIVE = A species that occurs on BLM lands and whose viability is at risk, BLM WATCH = Species that may be added to the sensitive species list in future pending new information regarding species status.

Special Status Plant Species Potentially within 2000 Meters of Project Area

Common Name	Scientific Name	USFWS (ESA)	NMAC	NMRPCS	USFS	USFS SCC	BLM
Puzzle Sunflower	Helianthus paradoxus	LT	E	SS			

NMAC = New Mexico Administrative Code, E = Endangered; NMRPCS = [New Mexico Rare Plant Conservation Strategy](#), SS = NM Rare Plant Conservation Strategy Species; USFS = U.S. Forest Service, Sensitive Species = A species likely to occur on USFS lands that is of concern for a potential reduction in population viability; SCC = Species of Conservation Concern; BLM = Bureau of Land Management, BLM SENSITIVE = A species that occurs on BLM lands and whose viability is at risk, BLM WATCH = Species that may be added to the sensitive species list in future pending new information regarding species status.

Project Recommendations

This report includes a preliminary species list that may be used during early stages of project or conservation planning. Even if this report indicates that your proposed project location would require a custom review from a biologist, **no review will be returned** until additional project details are provided. **To obtain a project review**, please submit additional details regarding the **type** of project, project **objectives**, anticipated project **duration**, **timing** of project construction, the composition and dimensions/quantities of **materials** that will be utilized for project implementation, any **equipment** that will be used, anticipated **ground disturbance** that will occur, wildlife surveys or observations that have occurred on or near the project site, and **any other relevant details** regarding potential effects of project activities on wildlife or wildlife habitat. **Photographs** of the project site are especially useful.

Although this project report may include management recommendations based on the project location, additional conservation measures may be needed. The Department can not fully assess potential effects and associated management recommendations until a **project type and description** have been submitted and an appropriate **impact buffer** for that project type has been applied. Also, the species list within this report represents an estimation of special status species that could be present at the site of a small-scale project. Species lists for projects that occur across **broader geographic scales** (e.g., one or more counties, multiple habitat types) are more appropriately obtained from the **Department's Biota Information System of New Mexico (BISON-M) database**. Species lists generated by the ERT may contain modeled species distributions in order to predict species occurrences within areas that lack previous wildlife inventories or surveys. This list can be refined using occurrence-based information within BISON-M regarding wildlife-habitat relationships and biological needs for species that might be present within the project footprint.

Burrowing owl (*Athene cunicularia*) may occur within your project area. Burrowing owls are protected from take by the Migratory Bird Treaty Act and under New Mexico state statute. Before any ground disturbing activities occur, the Department recommends that a preliminary burrowing owl survey be conducted by a qualified biologist using the Department's [Burrowing Owl Survey Protocol](#). Should burrowing owls be documented in the project area, please contact the Department or USFWS for further recommendations regarding relocation or avoidance of impacts.

Your project area intersects designated critical habitat for one or more species that are listed under the federal ESA. The Department recommends that you confirm this using the USFWS's Information for Planning and Consultation (IPAC) system (<https://ipac.ecosphere.fws.gov/>) and then reach out to the appropriate species lead(s) with the [New Mexico Ecological Services Office of USFWS](#). The USFWS has authority to designate critical habitat for species listed under the ESA. The Department has no authority to designate critical habitat for species listed under the WCA or ESA. If there are any federally-listed plants within your project area and your project has a federal nexus, you may find these recommendations from the USFWS useful: [Recommendations for Endangered Species Act Section 7 Consultations Involving Plants in New Mexico](#); [Standards for Conducting and Reporting Consultation Surveys for Federally-Listed, Proposed, and Candidate Plants in New Mexico](#).

The proposed project occurs near an important bat area. This area may contain important bat roosting resources, such as caves or mines, that potentially could be affected by certain project activities. Follow the guidelines below to minimize disturbance to roosting bats.

- Avoid use of pesticides, firearms, open-flame torches, or heavy smoke-producing equipment, especially from April through September.
- If artificial lighting is needed, use only light sources powered by batteries, or cyalume glow/light sticks. Keep the site clean by picking up refuse or materials from project lighting or operations whenever they are shut down.
- If the use of permanent outdoor lights cannot be avoided, design all outdoor lighting in accordance with the New Mexico Night Sky Protection Act, which requires that outdoor lighting be fitted with shielding that directs light downward, rather than upward or laterally, to prevent sky glow and associated impacts to bats.
- For any surface disturbing activities, the project footprint (including a 350 foot buffer) should avoid potential roost sites such as caves or mines, especially from April through July. Tree clearing activities and prescribed burns should include a minimum 0.5 mile buffer from any such features.
- If caves, mines, bridges, or other man-made structure suitable as potential bat roosts are encountered within the project area, they should not be entered during any time of year, and no roosting or hibernating bats should be contacted or disturbed. Report any dead or injured bats to the Department, who can facilitate contacts with other appropriate personnel.

Your project area intersects an Important Plant Area (IPA) that contains one or more species of plants listed as threatened or endangered by the New Mexico Energy, Minerals and Natural Resources Department (EMNRD) under New Mexico Statutes Annotated (NMSA) 75-6-1 or by the USFWS under the federal ESA. Although IPAs have no legal designation, they have been identified as areas that support either a high diversity of sensitive plant species or contain the last remaining locations of New Mexico's most endangered plants. The Department recommends that you consult with EMNRD's [Endangered Plant Program Coordinator](#) regarding any state-listed plants and the USFWS's [Information for Planning and Consultation \(IPAC\)](#) system for any federally-listed plants and reaching out to the appropriate federal species lead(s) with the [New Mexico Ecological Services Office of USFWS](#). The Department does not have any authority to designate or advise on state- or federally-listed plants.

Prairie dog colonies may occur within the vicinity of your project area. Both black-tailed prairie dogs (*Cynomys ludovicianus*) and Gunnison's prairie dogs (*Cynomys gunnisoni*) are designated as New Mexico SGCN, and their colonies provide important habitat for other grassland wildlife. Wherever possible, occupied prairie dog colonies should be left undisturbed, and all project activities should be directed off the colony. Any burrows that are located on the project site should be surveyed by a qualified biologist to determine whether burrows are active or inactive and whether burrowing owls may be utilizing the site. Colonies within the range of the black-tailed prairie dog can be surveyed by a qualified biologist diurnally, year-round using binoculars. Colonies within the range of the Gunnison's prairie dog can be surveyed by a qualified biologist diurnally, using binoculars during the warmer months from April through October and by searching for fairly fresh scat and lack of cobwebs or debris at the mouths of burrows during the cold months (November through March). If ground-disturbing activities cannot be relocated off the prairie dog colony, or if project activities involve control of prairie dogs, the Department recommends live-trapping and relocation of prairie dogs. The Department can provide recommendations regarding suitability of potential translocation areas and procedures.

The proposed project occurs within or near a riparian area. Because riparian areas are important wildlife habitats, the project footprint should avoid removing any riparian vegetation or creating ground disturbance either directly within or affecting the riparian area, unless the project is intended to restore riparian habitat through non-native plant removal and replanting with native species. If your project involves removal of non-native riparian trees or planting of native riparian vegetation, please refer to the Department's habitat handbook guideline for [Restoration and Management of Native and Non-native Trees in Southwestern Riparian Ecosystems](#). The [New Mexico Riparian Habitat Map \(NMRipMap\)](#) may also provide useful information on local riparian habitat composition and structure.

Your proposed project occurs within an area where springs or other important natural water features occur. This may result in the presence of a high use area for wildlife relative to the surrounding landscape. To ensure continued function of these important wildlife habitats, your project should consider measures to avoid the following.

- Altering surface or groundwater flow or hydrology,
- Disturbance to soil that modifies geomorphic properties or facilitates invasion of non-native vegetation.
- Affecting local surface or groundwater quality.
- Creating disturbance to wildlife utilizing these water features. Disturbance to wildlife can be reduced through practices including clustering infrastructure and activity wherever possible, avoiding large visual obstructions around water features, and limiting nighttime project operations or activities.

Department biologists are available for site-specific consultation regarding measures to assist with management and conservation of these habitat resources.

Disclaimers regarding recommendations:

- The Department provides technical guidance to support the persistence of all protected species of native fish and wildlife, including game and nongame wildlife species. Species listed within this report include those that have been documented to occur within the project area, and others that may not have been documented but are projected to occur within the project vicinity.
- Recommendations are provided by the Department under the authority of § 17-1-5.1 New Mexico Statutes Annotated 1978, to provide "communication and consultation with federal and other state agencies, local governments and communities, private organizations and affected interests responsible for habitat, wilderness, recreation, water quality and environmental protection to ensure comprehensive conservation services for hunters, anglers and nonconsumptive wildlife users".
- The Department has no authority for management of plants or Important Plant Areas. The [New Mexico Endangered Plant Program](#), under the Energy, Minerals, and Natural Resources Department's Forestry Division, identifies and develops conservation measures necessary to ensure the survival of plant species within New Mexico. Plant status information is provided within this report as a courtesy to users. Recommendations provided within the ERT may not be sufficient to preclude impacts to rare or sensitive plants, unless conservation measures are identified in coordination with the Endangered Plant Program.
- Additional coordination and/or consultation may also be necessary under the federal ESA or National Environmental Policy Act (NEPA). Further site-specific mitigation recommendations may be proposed during ESA consultation and/or NEPA analyses or through coordination with affected federal agencies.