



---

## PROJECT INFORMATION

---

**Project Title:** Rio Penasco 3 sites  
**Project Type:** (NO PROJECT REVIEW) SPECIES LIST ONLY  
**Latitude/Longitude (DMS):** 32.858552 / -105.530648  
**County(s):** OTERO  
**Project Description:** Assessment of function of 3 dams for NRCS

## REQUESTOR INFORMATION

---

**Project Organization:**  
**Contact Name:** Becky Burink  
**Email Address:** burink@pinyon-env.com  
**Organization:** Pinyon Environmental, Inc  
**Address:** 3222 S Vance St #200, Lakewood CO 80227  
**Phone:** 3039805200

## OVERALL STATUS

---

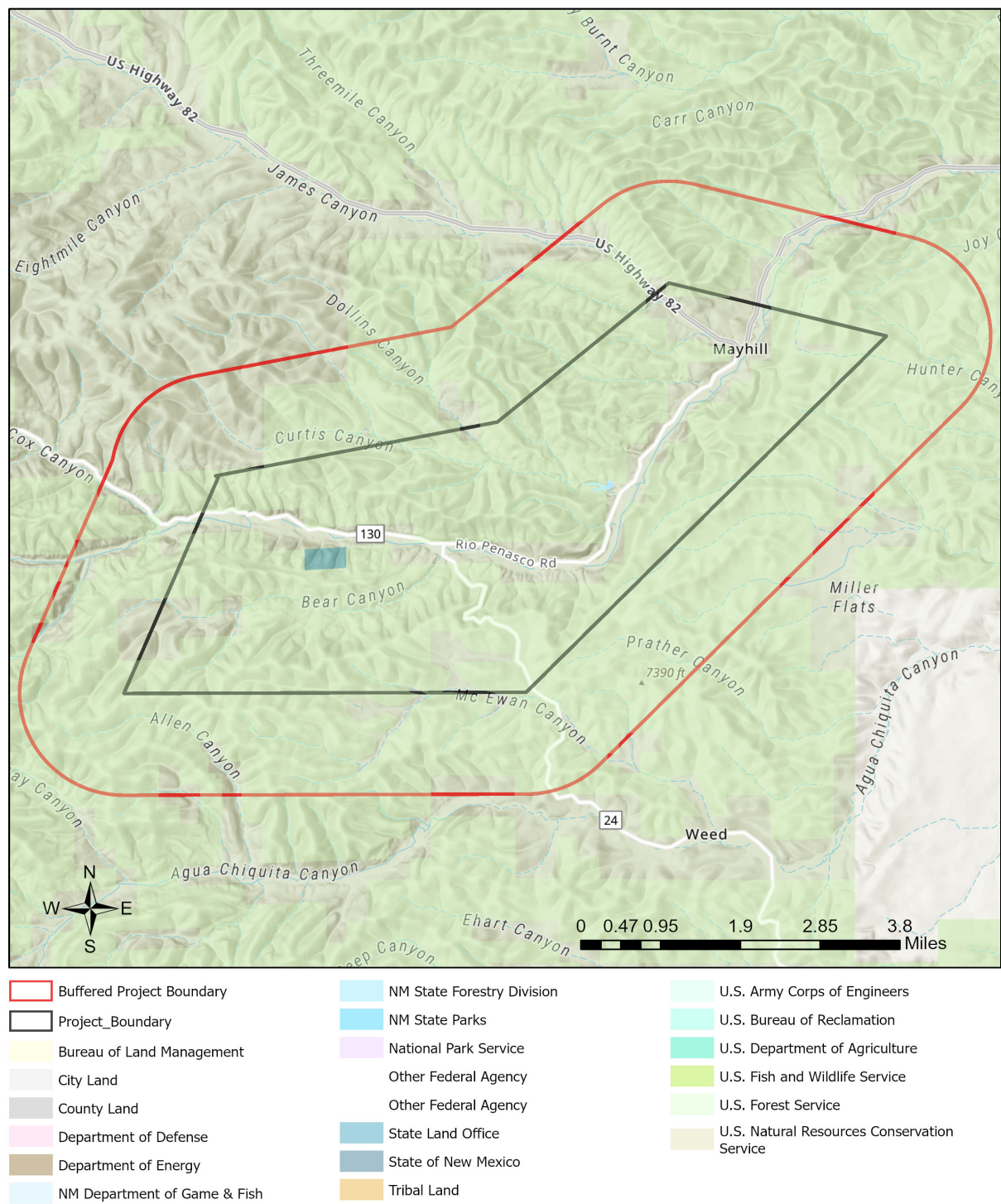
This report contains an initial list of recommendations regarding potential impacts to wildlife or wildlife habitats from the proposed project; see the Project Recommendations section below for further details. Your project proposal is being forwarded to a New Mexico Department of Game and Fish (Department) biologist for review to determine whether there are any additional recommendations regarding the proposed actions. A Department biologist will be in touch within 30 days if there are further recommendations regarding this project proposal.

---

**About this report:**

- This environmental review is based on the project description and location that was entered. The report must be updated if the project type, area, or operational components are modified.
- This is a preliminary environmental screening assessment and report. It is not a substitute for the potential wildlife knowledge gained by having a biologist conduct a field survey of the project area. Federal status and plant data are provided as a courtesy to users. The review is also not intended to replace consultation required under the federal Endangered Species Act (ESA), including impact analyses for federal resources from the U.S. Fish and Wildlife Service (USFWS) using their [Information for Planning and Consultation tool](#).
- This report contains information on wildlife species protected under the ESA and the [Wildlife Conservation Act \(WCA\)](#), [Species of Greatest Conservation Need \(SGCN\)](#), and Species of Economic and Recreational Importance (SERI). Species listed under the ESA are protected from take at the federal level and under the WCA are protected from take at the state level. SGCN are identified in the [State Wildlife Action Plan \(SWAP\) for New Mexico](#); all of these species are considered to be of conservation concern but not all of them are protected from take at the state or federal level. The harvest of all SERI is regulated at the state level. The Department has no authority to designate critical habitat for species listed under the WCA; only the USFWS can designate critical habitat for species listed under the ESA.
- The New Mexico Environmental Review Tool (ERT) utilizes species observation locations and species habitat suitability models, both of which are subject to ongoing change and refinement. Inclusion or omission of a species within a report cannot guarantee species presence or absence within your project area. To determine occurrence of any species listed in this report, or other wildlife that may be present within your project area, onsite surveys conducted by a qualified biologist during appropriate, species-specific survey timelines may be necessary.
- The Department encourages use of the ERT to modify proposed projects for avoidance, minimization, or mitigation of wildlife impacts. However, the ERT is not intended to be used in a repeatedly iterative fashion to adjust project attributes until a previously determined recommendation is generated. The ERT serves to assess impacts once project details are developed. The [New Mexico Crucial Habitat Assessment Tool](#), the data layers from which are included in the ERT, is the appropriate system for advising early-stage project planning and design to avoid areas of anticipated wildlife concerns and associated regulatory requirements.

Rio Penasco 3 sites



Texas Parks & Wildlife, Esri, TomTom, Garmin, SafeGraph, GeoTechnologies, Inc, METI/NASA, USGS, EPA, NPS, USDA, USFWS  
NHNM, USGS, USFS, US Census Bureau, NMDGF  
Esri, NASA, NGA, USGS

**Special Status Animal Species Potentially within 2000 Meters of Project Area**

Common Name	Scientific Name	USFWS (ESA)	NMDGF (WCA)	NMDGF SGCN/SERI	USFS	USFS SCC	BLM
<a href="#">Sacramento Mountain Salamander</a>	<a href="#">Aneides hardii</a>		T	SGCN	Sensitive Species		
<a href="#">Barking Frog</a>	<a href="#">Craugastor augusti</a>			SGCN			
<a href="#">Plains Leopard Frog</a>	<a href="#">Lithobates blairi</a>			SGCN			BLM WATCH
<a href="#">Northern Leopard Frog</a>	<a href="#">Lithobates pipiens</a>			SGCN	Sensitive Species	USFS R3 SCC	BLM SENSITIVE
<a href="#">Applomado Falcon</a>	<a href="#">Falco femoralis</a>		E	SGCN			
<a href="#">Peregrine Falcon</a>	<a href="#">Falco peregrinus</a>		T	SGCN			BLM WATCH
<a href="#">Yellow-Billed Cuckoo</a>	<a href="#">Coccyzus americanus</a>	LT		SGCN			
<a href="#">Elf Owl</a>	<a href="#">Micrathene whitneyi</a>			SGCN			BLM WATCH
<a href="#">Western Burrowing Owl</a>	<a href="#">Athene cunicularia hypugaea</a>			SGCN	Sensitive Species	USFS R3 SCC	BLM SENSITIVE
<a href="#">Mexican Spotted Owl</a>	<a href="#">Strix occidentalis lucida</a>	LT		SGCN			
<a href="#">Common Nighthawk</a>	<a href="#">Chordeiles minor</a>			SGCN			
<a href="#">Lewis's Woodpecker</a>	<a href="#">Melanerpes lewis</a>			SGCN		USFS R3 SCC	BLM WATCH
<a href="#">Williamson's Sapsucker</a>	<a href="#">Sphyrapicus thyroideus</a>			SGCN			
<a href="#">Bank Swallow</a>	<a href="#">Riparia riparia</a>			SGCN			
<a href="#">Pinyon Jay</a>	<a href="#">Gymnorhinus cyanocephalus</a>			SGCN		USFS R3 SCC	BLM SENSITIVE
<a href="#">Juniper Titmouse</a>	<a href="#">Baeolophus ridgwayi</a>			SGCN		USFS R3 SCC	BLM WATCH
<a href="#">Pygmy Nuthatch</a>	<a href="#">Sitta pygmaea</a>			SGCN			
<a href="#">Western Bluebird</a>	<a href="#">Sialia mexicana</a>			SGCN			
<a href="#">Mountain Bluebird</a>	<a href="#">Sialia currucoides</a>			SGCN			
<a href="#">Loggerhead Shrike</a>	<a href="#">Lanius ludovicianus</a>			SGCN		USFS R3 SCC	BLM WATCH
<a href="#">Gray Vireo</a>	<a href="#">Vireo vicinior</a>		T	SGCN	Sensitive Species	USFS R3 SCC	BLM WATCH
<a href="#">Black-Throated Gray Warbler</a>	<a href="#">Setophaga nigrescens</a>			SGCN			BLM WATCH
<a href="#">Grace's Warbler</a>	<a href="#">Setophaga graciae</a>			SGCN		USFS R3 SCC	BLM WATCH

### Special Status Animal Species Potentially within 2000 Meters of Project Area

Common Name	Scientific Name	USFWS (ESA)	NMDGF (WCA)	NMDGF SGCN/SERI	USFS	USFS SCC	BLM
<a href="#">Black-Chinned Sparrow</a>	<a href="#">Spizella atrogularis</a>			SGCN			BLM WATCH
<a href="#">Vesper Sparrow</a>	<a href="#">Pooecetes gramineus</a>			SGCN			
<a href="#">Chestnut-Collared Longspur</a>	<a href="#">Calcarius ornatus</a>			SGCN			BLM SENSITIVE
<a href="#">Cassin's Finch</a>	<a href="#">Haemorhous cassinii</a>			SGCN			BLM WATCH
<a href="#">Evening Grosbeak</a>	<a href="#">Coccothraustes vespertinus</a>			SGCN			
<a href="#">Rainbow Trout</a>	<a href="#">Oncorhynchus mykiss</a>			SERI			
<a href="#">Brown Trout</a>	<a href="#">Salmo trutta</a>			SERI			
<a href="#">Spotted Bat</a>	<a href="#">Euderma maculatum</a>		T	SGCN	Sensitive Species	USFS R3 SCC	BLM SENSITIVE
<a href="#">Pale Townsend's Big-Eared Bat</a>	<a href="#">Corynorhinus townsendii pallescens</a>			SGCN	Sensitive Species	USFS R3 SCC	BLM SENSITIVE
<a href="#">New Mexican Meadow Jumping Mouse</a>	<a href="#">Zapus hudsonius luteus</a>	LE	E	SGCN	Sensitive Species		BLM SENSITIVE
<a href="#">Black Bear</a>	<a href="#">Ursus americanus</a>			SGCN			
<a href="#">Mountain Lion</a>	<a href="#">Puma concolor</a>			SGCN			
<a href="#">Elk</a>	<a href="#">Cervus canadensis</a>			SGCN			
<a href="#">Mule Deer</a>	<a href="#">Odocoileus hemionus</a>			SGCN			
<a href="#">Western River Cooter</a>	<a href="#">Pseudemys gorzugi</a>		T	SGCN			BLM SENSITIVE
<a href="#">Western Ribbon Snake</a>	<a href="#">Thamnophis proximus</a>		T	SGCN	Sensitive Species		
<a href="#">Rock Rattlesnake</a>	<a href="#">Crotalus lepidus</a>			SGCN			

Common Name hyperlink takes you to species account in [bison-m.org](https://www.bison-m.org/); Scientific Name hyperlink takes you to information in [NatureServe Explorer](#); ESA = Endangered Species Act, C = Candidate, LE = Listed Endangered, LT = Listed Threatened, XN = Non-essential Experimental Population, for other ESA codes see this [website](#); WCA = Wildlife Conservation Act, E = Endangered, T = Threatened; SERI = Species of Economic and Recreational Importance; SGCN = Species of Greatest Conservation Need; USFS = U.S. Forest Service, Sensitive Species = A species likely to occur on USFS lands that is of concern for a potential reduction in population viability; SCC = Species of Conservation Concern; BLM = Bureau of Land Management, BLM SENSITIVE = A species that occurs on BLM lands and whose viability is at risk, BLM WATCH = Species that may be added to the sensitive species list in future pending new information regarding species status.

**Special Status Plant Species Potentially within 2000 Meters of Project Area**

Common Name	Scientific Name	USFWS (ESA)	NMAC	NMRPCS	USFS	USFS SCC	BLM
<a href="#">Sacramento Mountains Thistle</a>	<a href="#">Cirsium vinaceum</a>	LT	E	SS			
<a href="#">Winged Milkvetch</a>	<a href="#">Astragalus altus</a>			SS	Sensitive Species	USFS R3 SCC	
<a href="#">Mescalero Currant</a>	<a href="#">Ribes mescaleirum</a>			SS			

NMAC = New Mexico Administrative Code, E = Endangered; NMRPCS = [New Mexico Rare Plant Conservation Strategy](#), SS = NM Rare Plant Conservation Strategy Species; USFS = U.S. Forest Service, Sensitive Species = A species likely to occur on USFS lands that is of concern for a potential reduction in population viability; SCC = Species of Conservation Concern; BLM = Bureau of Land Management, BLM SENSITIVE = A species that occurs on BLM lands and whose viability is at risk, BLM WATCH = Species that may be added to the sensitive species list in future pending new information regarding species status.

## Project Recommendations

This report includes a preliminary species list that may be used during early stages of project or conservation planning. Even if this report indicates that your proposed project location would require a custom review from a biologist, **no review will be returned** until additional project details are provided. **To obtain a project review**, please submit additional details regarding the **type** of project, project **objectives**, anticipated project **duration**, **timing** of project construction, the composition and dimensions/quantities of **materials** that will be utilized for project implementation, any **equipment** that will be used, anticipated **ground disturbance** that will occur, wildlife surveys or observations that have occurred on or near the project site, and **any other relevant details** regarding potential effects of project activities on wildlife or wildlife habitat. **Photographs** of the project site are especially useful.

Although this project report may include management recommendations based on the project location, additional conservation measures may be needed. The Department can not fully assess potential effects and associated management recommendations until a **project type and description** have been submitted and an appropriate **impact buffer** for that project type has been applied. Also, the species list within this report represents an estimation of special status species that could be present at the site of a small-scale project. Species lists for projects that occur across **broader geographic scales** (e.g., one or more counties, multiple habitat types) are more appropriately obtained from the **Department's Biota Information System of New Mexico (BISON-M) database**. Species lists generated by the ERT may contain modeled species distributions in order to predict species occurrences within areas that lack previous wildlife inventories or surveys. This list can be refined using occurrence-based information within BISON-M regarding wildlife-habitat relationships and biological needs for species that might be present within the project footprint.

The highly invasive, noxious weed African rue (*Peganum harmala*) has been documented near the proposed project area. African rue thrives on disturbed sites and along road sides. It is extremely drought-tolerant and will undergo rapid vegetative growth when soil moisture is available. African rue is extremely toxic to horses, sheep, cattle, and humans, containing at least four types of poisonous alkaloids. In addition, most parts of the plant contain allelopathic chemicals that will reduce the growth of surrounding native plants. To help control this species' spread, the Department recommends that any vehicles and equipment arriving on the project site be thoroughly cleaned of all visible dirt and mud to help contain and control the potential spread of weed seeds. The operator should also initiate a weed management program that includes a commitment to aggressive control of any African rue on the project site. For more information on potential control of African rue, see this [field guide](#).

Your project area intersects designated critical habitat for one or more species that are listed under the federal ESA. The Department recommends that you confirm this using the USFWS's Information for Planning and Consultation (IPAC) system (<https://ipac.ecosphere.fws.gov/>) and then reach out to the appropriate species lead(s) with the [New Mexico Ecological Services Office of USFWS](#). The USFWS has authority to designate critical habitat for species listed under the ESA. The Department has no authority to designate critical habitat for species listed under the WCA or ESA. If there are any federally-listed plants within your project area and your project has a federal nexus, you may find these recommendations from the USFWS useful: [Recommendations for Endangered Species Act Section 7 Consultations Involving Plants in New Mexico](#); [Standards for Conducting and Reporting Consultation Surveys for Federally-Listed, Proposed, and Candidate Plants in New Mexico](#).



The proposed project occurs near an important bat area. This area may contain important bat roosting resources, such as caves or mines, that potentially could be affected by certain project activities. Follow the guidelines below to minimize disturbance to roosting bats.

- Avoid use of pesticides, firearms, open-flame torches, or heavy smoke-producing equipment, especially from April through September.
- If artificial lighting is needed, use only light sources powered by batteries, or cyalume glow/light sticks. Keep the site clean by picking up refuse or materials from project lighting or operations whenever they are shut down.
- If the use of permanent outdoor lights cannot be avoided, design all outdoor lighting in accordance with the New Mexico Night Sky Protection Act, which requires that outdoor lighting be fitted with shielding that directs light downward, rather than upward or laterally, to prevent sky glow and associated impacts to bats.
- For any surface disturbing activities, the project footprint (including a 350 foot buffer) should avoid potential roost sites such as caves or mines, especially from April through July. Tree clearing activities and prescribed burns should include a minimum 0.5 mile buffer from any such features.
- If caves, mines, bridges, or other man-made structure suitable as potential bat roosts are encountered within the project area, they should not be entered during any time of year, and no roosting or hibernating bats should be contacted or disturbed. Report any dead or injured bats to the Department, who can facilitate contacts with other appropriate personnel.

Your project area intersects an Important Plant Area (IPA) that contains one or more species of plants listed as threatened or endangered by the New Mexico Energy, Minerals and Natural Resources Department (EMNRD) under New Mexico Statutes Annotated (NMSA) 75-6-1 or by the USFWS under the federal ESA. Although IPAs have no legal designation, they have been identified as areas that support either a high diversity of sensitive plant species or contain the last remaining locations of New Mexico's most endangered plants. The Department recommends that you consult with EMNRD's [Endangered Plant Program Coordinator](#) regarding any state-listed plants and the USFWS's [Information for Planning and Consultation \(IPAC\)](#) system for any federally-listed plants and reaching out to the appropriate federal species lead(s) with the [New Mexico Ecological Services Office of USFWS](#). The Department does not have any authority to designate or advise on state- or federally-listed plants.

The proposed project occurs within or near a riparian area. Because riparian areas are important wildlife habitats, the project footprint should avoid removing any riparian vegetation or creating ground disturbance either directly within or affecting the riparian area, unless the project is intended to restore riparian habitat through non-native plant removal and replanting with native species. If your project involves removal of non-native riparian trees or planting of native riparian vegetation, please refer to the Department's habitat handbook guideline for [Restoration and Management of Native and Non-native Trees in Southwestern Riparian Ecosystems](#). The [New Mexico Riparian Habitat Map \(NMRipMap\)](#) may also provide useful information on local riparian habitat composition and structure.



Your proposed project occurs within an area where springs or other important natural water features occur. This may result in the presence of a high use area for wildlife relative to the surrounding landscape. To ensure continued function of these important wildlife habitats, your project should consider measures to avoid the following.

- Altering surface or groundwater flow or hydrology,
- Disturbance to soil that modifies geomorphic properties or facilitates invasion of non-native vegetation.
- Affecting local surface or groundwater quality.
- Creating disturbance to wildlife utilizing these water features. Disturbance to wildlife can be reduced through practices including clustering infrastructure and activity wherever possible, avoiding large visual obstructions around water features, and limiting nighttime project operations or activities.

Department biologists are available for site-specific consultation regarding measures to assist with management and conservation of these habitat resources.

Your project is on or near a section of road that has experienced comparatively high incidence of wildlife-vehicle collisions. Coordinate with the New Mexico Department of Transportation to consider implementing mitigation actions that are appropriate to your project area and planned action to reduce wildlife-vehicle collisions. These may include but are not limited to: installation of wildlife-proof fencing; installation of wildlife passages such as arch culverts or overpasses; and installation of animal detection systems.

#### **Disclaimers regarding recommendations:**

- The Department provides technical guidance to support the persistence of all protected species of native fish and wildlife, including game and nongame wildlife species. Species listed within this report include those that have been documented to occur within the project area, and others that may not have been documented but are projected to occur within the project vicinity.
- Recommendations are provided by the Department under the authority of § 17-1-5.1 New Mexico Statutes Annotated 1978, to provide "communication and consultation with federal and other state agencies, local governments and communities, private organizations and affected interests responsible for habitat, wilderness, recreation, water quality and environmental protection to ensure comprehensive conservation services for hunters, anglers and nonconsumptive wildlife users".
- The Department has no authority for management of plants or Important Plant Areas. The [New Mexico Endangered Plant Program](#), under the Energy, Minerals, and Natural Resources Department's Forestry Division, identifies and develops conservation measures necessary to ensure the survival of plant species within New Mexico. Plant status information is provided within this report as a courtesy to users. Recommendations provided within the ERT may not be sufficient to preclude impacts to rare or sensitive plants, unless conservation measures are identified in coordination with the Endangered Plant Program.
- Additional coordination and/or consultation may also be necessary under the federal ESA or National Environmental Policy Act (NEPA). Further site-specific mitigation recommendations may be proposed during ESA consultation and/or NEPA analyses or through coordination with affected federal agencies.