



---

## PROJECT INFORMATION

---

**Project Title:** Fite Ranch Conservation Easement  
**Project Type:** (NO PROJECT REVIEW) SPECIES LIST ONLY  
**Latitude/Longitude (DMS):** 33.872436 / -106.738024  
**County(s):** SOCORRO  
**Project Description:** The Property consists of relatively natural habitat, the protection of which will add to the larger body of protected lands and the large unfragmented area surrounding the adjacent 3,200 mi<sup>2</sup> White Sands Missile Range (WSMR), as well as allowing for species movement through direct connectivity with the 57,331-acre Bosque del Apache National Wildlife Refuge productive riparian area. The Property and surrounding area are comprised primarily of native Chihuahuan Desert grasslands and scrub that are interspersed with a sparse mix of piñon and juniper trees. This large expanse of relatively undeveloped grasslands provide habitat for a variety of wildlife including elk, mule deer, pronghorn, oryx, mountain lion, bobcat, fox, and coyote.

---

## REQUESTOR INFORMATION

---

**Project Organization:**  
**Contact Name:** Traci Burnsed  
**Email Address:** tburnsed@nmlandconservancy.org  
**Organization:** New Mexico Land Conservancy  
**Address:** 1509 Pebble Beach Rd , Las Cruces NM 88011  
**Phone:** 575-313-0212

---

## OVERALL STATUS

---

The information contained within this report comprises the recommendations of the New Mexico Department of Game and Fish (Department) for management and mitigation of proposed project impacts to wildlife and habitat resources; see the Project Recommendations section below for further details. No further consultation with the Department is required based on the project's location and, with implementation of mitigation measures described in the Project Recommendations section below, no adverse effects to wildlife or important habitats are anticipated. However, a Department biologist may be in touch within 30 days if they determine that further review is required.



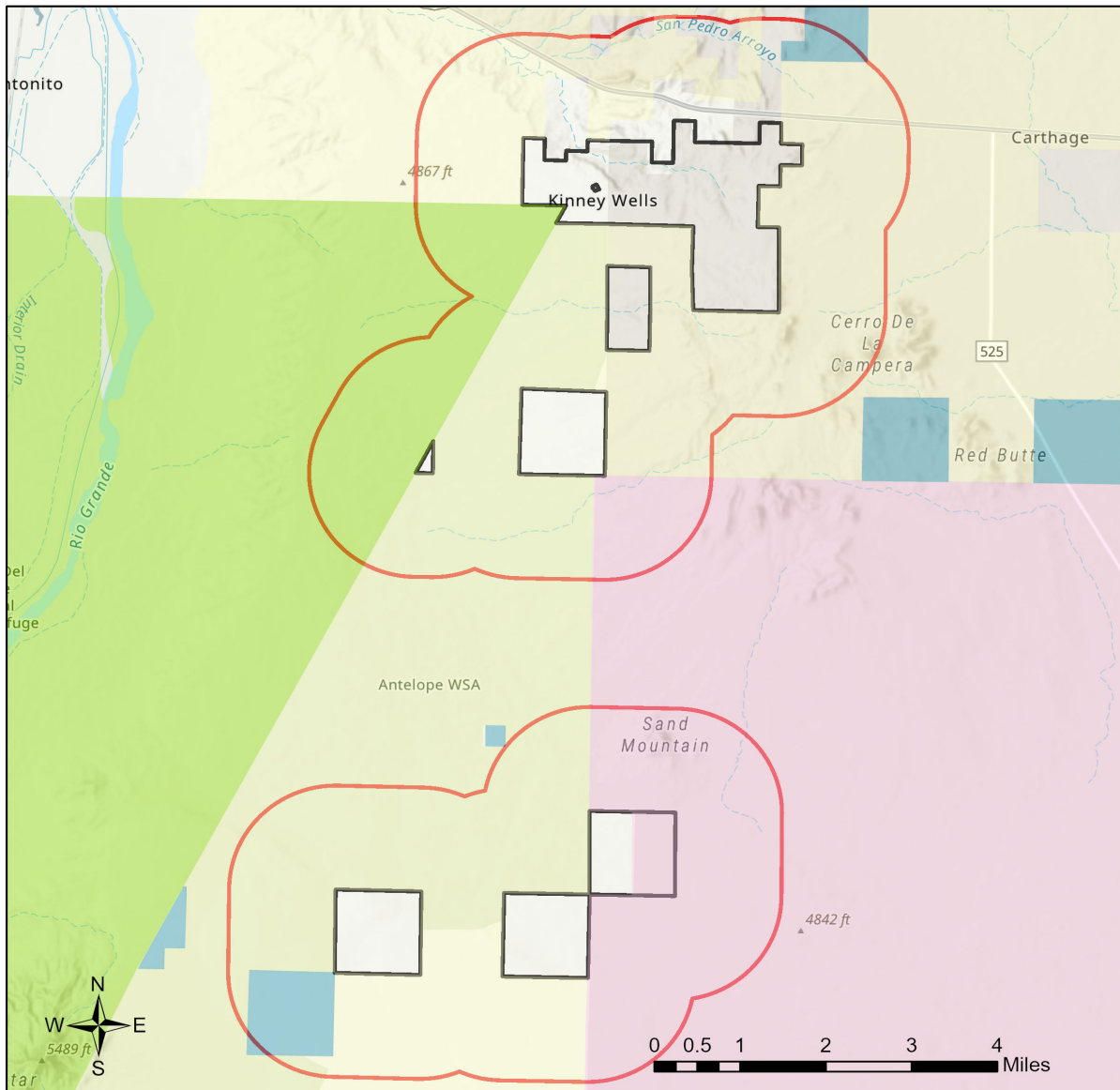
---

### About this report:

- This environmental review is based on the project description and location that was entered. The report must be updated if the project type, area, or operational components are modified.
- This is a preliminary environmental screening assessment and report. It is not a substitute for the potential wildlife knowledge gained by having a biologist conduct a field survey of the project area. Federal status and plant data are provided as a courtesy to users. The review is also not intended to replace consultation required under the federal Endangered Species Act (ESA), including impact analyses for federal resources from the U.S. Fish and Wildlife Service (USFWS) using their [Information for Planning and Consultation tool](#).
- This report contains information on wildlife species protected under the ESA and the [Wildlife Conservation Act \(WCA\)](#), [Species of Greatest Conservation Need \(SGCN\)](#), and Species of Economic and Recreational Importance (SERI). Species listed under the ESA are protected from take at the federal level and under the WCA are protected from take at the state level. SGCN are identified in the [State Wildlife Action Plan \(SWAP\) for New Mexico](#); all of these species are considered to be of conservation concern but not all of them are protected from take at the state or federal level. The harvest of all SERI is regulated at the state level. The Department has no authority to designate critical habitat for species listed under the WCA; only the USFWS can designate critical habitat for species listed under the ESA.
- The New Mexico Environmental Review Tool (ERT) utilizes species observation locations and species habitat suitability models, both of which are subject to ongoing change and refinement. Inclusion or omission of a species within a report cannot guarantee species presence or absence within your project area. To determine occurrence of any species listed in this report, or other wildlife that may be present within your project area, onsite surveys conducted by a qualified biologist during appropriate, species-specific survey timelines may be necessary.
- The Department encourages use of the ERT to modify proposed projects for avoidance, minimization, or mitigation of wildlife impacts. However, the ERT is not intended to be used in a repeatedly iterative fashion to adjust project attributes until a previously determined recommendation is generated. The ERT serves to assess impacts once project details are developed. The [New Mexico Crucial Habitat Assessment Tool](#), the data layers from which are included in the ERT, is the appropriate system for advising early-stage project planning and design to avoid areas of anticipated wildlife concerns and associated regulatory requirements.



## Fite Ranch Conservation Easement



NHNM, USGS, USFS, US Census Bureau, NMDGF  
Esri, NASA, NGA, USGS  
Esri, TomTom, Garmin, SafeGraph, GeoTechnologies, Inc, METI/NASA, USGS, Bureau of Land Management, EPA, NPS, USDA, USFWS



**Special Status Animal Species Potentially within 2000 Meters of Project Area**

Common Name	Scientific Name	USFWS (ESA)	NMDGF (WCA)	NMDGF SGCN/SERI	USFS	USFS SCC	BLM
<a href="#">Boreal Chorus Frog</a>	<a href="#">Pseudacris maculata</a>			SGCN			
<a href="#">Barking Frog</a>	<a href="#">Craugastor augusti</a>			SGCN			
<a href="#">Plains Leopard Frog</a>	<a href="#">Lithobates blairi</a>			SGCN			BLM WATCH
<a href="#">Aplomado Falcon</a>	<a href="#">Falco femoralis</a>		E	SGCN			
<a href="#">Peregrine Falcon</a>	<a href="#">Falco peregrinus</a>		T	SGCN			BLM WATCH
<a href="#">Mountain Plover</a>	<a href="#">Charadrius montanus</a>			SGCN	Sensitive Species		BLM WATCH
<a href="#">Flammulated Owl</a>	<a href="#">Otus flammeolus</a>			SGCN			BLM WATCH
<a href="#">Elf Owl</a>	<a href="#">Micrathene whitneyi</a>			SGCN			BLM WATCH
<a href="#">Western Burrowing Owl</a>	<a href="#">Athene cucularia hypugaea</a>			SGCN	Sensitive Species	USFS R3 SCC	BLM SENSITIVE
<a href="#">Common Nighthawk</a>	<a href="#">Chordeiles minor</a>			SGCN			
<a href="#">Lewis's Woodpecker</a>	<a href="#">Melanerpes lewis</a>			SGCN		USFS R3 SCC	BLM WATCH
<a href="#">Red-Headed Woodpecker</a>	<a href="#">Melanerpes erythrocephalus</a>			SGCN			
<a href="#">Williamson's Sapsucker</a>	<a href="#">Sphyrapicus thyroideus</a>			SGCN			
<a href="#">Olive-Sided Flycatcher</a>	<a href="#">Contopus cooperi</a>			SGCN			
<a href="#">Bank Swallow</a>	<a href="#">Riparia riparia</a>			SGCN			
<a href="#">Pinyon Jay</a>	<a href="#">Gymnorhinus cyanocephalus</a>			SGCN		USFS R3 SCC	BLM SENSITIVE
<a href="#">Juniper Titmouse</a>	<a href="#">Baeolophus ridgwayi</a>			SGCN		USFS R3 SCC	BLM WATCH
<a href="#">Pygmy Nuthatch</a>	<a href="#">Sitta pygmaea</a>			SGCN			
<a href="#">Western Bluebird</a>	<a href="#">Sialia mexicana</a>			SGCN			
<a href="#">Mountain Bluebird</a>	<a href="#">Sialia currucoides</a>			SGCN			
<a href="#">Bendire's Thrasher</a>	<a href="#">Toxostoma bendirei</a>			SGCN		USFS R3 SCC	BLM SENSITIVE
<a href="#">Sprague's Pipit</a>	<a href="#">Anthus spragueii</a>			SGCN			BLM SENSITIVE
<a href="#">Loggerhead Shrike</a>	<a href="#">Lanius ludovicianus</a>			SGCN		USFS R3 SCC	BLM WATCH



**Special Status Animal Species Potentially within 2000 Meters of Project Area**

Common Name	Scientific Name	USFWS (ESA)	NMDGF (WCA)	NMDGF SGCN/SERI	USFS	USFS SCC	BLM
<a href="#">Gray Vireo</a>	<a href="#">Vireo vicinior</a>		T	SGCN	Sensitive Species	USFS R3 SCC	BLM WATCH
<a href="#">Black-Throated Gray Warbler</a>	<a href="#">Setophaga nigrescens</a>			SGCN			BLM WATCH
<a href="#">Painted Redstart</a>	<a href="#">Myioborus pictus</a>			SGCN			
<a href="#">Black-Chinned Sparrow</a>	<a href="#">Spizella atrogularis</a>			SGCN			BLM WATCH
<a href="#">Vesper Sparrow</a>	<a href="#">Poocetes gramineus</a>			SGCN			
<a href="#">Thick-billed Longspur</a>	<a href="#">Rhynchophanes mccownii</a>			SGCN			BLM SENSITIVE
<a href="#">Chestnut-Collared Longspur</a>	<a href="#">Calcarius ornatus</a>			SGCN			BLM SENSITIVE
<a href="#">Cassin's Finch</a>	<a href="#">Haemorhous cassinii</a>			SGCN			BLM WATCH
<a href="#">Evening Grosbeak</a>	<a href="#">Coccothraustes vespertinus</a>			SGCN			
<a href="#">Spotted Bat</a>	<a href="#">Euderma maculatum</a>		T	SGCN	Sensitive Species	USFS R3 SCC	BLM SENSITIVE
<a href="#">Pale Townsend's Big-Eared Bat</a>	<a href="#">Corynorhinus townsendii pallescens</a>			SGCN	Sensitive Species	USFS R3 SCC	BLM SENSITIVE
<a href="#">Gunnison's Prairie Dog</a>	<a href="#">Cynomys gunnisoni</a>			SGCN	Sensitive Species		BLM SENSITIVE
<a href="#">New Mexican Meadow Jumping Mouse</a>	<a href="#">Zapus hudsonius luteus</a>	LE	E	SGCN	Sensitive Species		BLM SENSITIVE
<a href="#">Elk</a>	<a href="#">Cervus canadensis</a>			SGCN			
<a href="#">Mule Deer</a>	<a href="#">Odocoileus hemionus</a>			SGCN			
<a href="#">Pronghorn</a>	<a href="#">Antilocapra americana</a>			SGCN			
<a href="#">Big Bend Slider</a>	<a href="#">Trachemys gaigeae</a>			SGCN			BLM SENSITIVE
<a href="#">Gray-checked Whiptail</a>	<a href="#">Aspidoscelis tesselata</a>		E	SGCN			BLM SENSITIVE
<a href="#">Rock Rattlesnake</a>	<a href="#">Crotalus lepidus</a>			SGCN			
<a href="#">Desert Massasauga</a>	<a href="#">Sistrurus catenatus edwardsii</a>			SGCN			

Common Name hyperlink takes you to species account in [bison-m.org](http://bison-m.org); Scientific Name hyperlink takes you to information in [NatureServe Explorer](#); ESA = Endangered Species Act, C = Candidate, LE = Listed Endangered, LT = Listed Threatened, XN = Non-essential Experimental Population, for other ESA codes see this [website](#); WCA = Wildlife Conservation Act, E = Endangered, T = Threatened; SERI = Species of Economic and Recreational Importance; SGCN = Species of Greatest Conservation Need; USFS = U.S. Forest Service, Sensitive Species = A species likely to occur on USFS lands that is of concern for a potential reduction in population viability; SCC = Species of Conservation



Concern; BLM = Bureau of Land Management, BLM SENSITIVE = A species that occurs on BLM lands and whose viability is at risk, BLM WATCH = Species that may be added to the sensitive species list in future pending new information regarding species status.

### Special Status Plant Species Potentially within 2000 Meters of Project Area

Common Name	Scientific Name	USFWS (ESA)	NMAC	NMRPCS	USFS	USFS SCC	BLM
<a href="#">Fugate's Amsonia</a>	<a href="#">Amsonia fugatei</a>			SS			BLM SENSITIVE

NMAC = New Mexico Administrative Code, E = Endangered; NMRPCS = [New Mexico Rare Plant Conservation Strategy](#), SS = NM Rare Plant Conservation Strategy Species; USFS = U.S. Forest Service, Sensitive Species = A species likely to occur on USFS lands that is of concern for a potential reduction in population viability; SCC = Species of Conservation Concern; BLM = Bureau of Land Management, BLM SENSITIVE = A species that occurs on BLM lands and whose viability is at risk, BLM WATCH = Species that may be added to the sensitive species list in future pending new information regarding species status.



---

## Project Recommendations

This report includes a preliminary species list that may be used during early stages of project or conservation planning. Even if this report indicates that your proposed project location would require a custom review from a biologist, **no review will be returned** until additional project details are provided. **To obtain a project review**, please submit additional details regarding the **type** of project, project **objectives**, anticipated project **duration**, **timing** of project construction, the composition and dimensions/quantities of **materials** that will be utilized for project implementation, any **equipment** that will be used, anticipated **ground disturbance** that will occur, wildlife surveys or observations that have occurred on or near the project site, and **any other relevant details** regarding potential effects of project activities on wildlife or wildlife habitat. **Photographs** of the project site are especially useful.

Although this project report may include management recommendations based on the project location, additional conservation measures may be needed. The Department can not fully assess potential effects and associated management recommendations until a **project type and description** have been submitted and an appropriate **impact buffer** for that project type has been applied. Also, the species list within this report represents an estimation of special status species that could be present at the site of a small-scale project. Species lists for projects that occur across **broader geographic scales** (e.g., one or more counties, multiple habitat types) are more appropriately obtained from the **Department's Biota Information System of New Mexico (BISON-M) database**. Species lists generated by the ERT may contain modeled species distributions in order to predict species occurrences within areas that lack previous wildlife inventories or surveys. This list can be refined using occurrence-based information within BISON-M regarding wildlife-habitat relationships and biological needs for species that might be present within the project footprint.

Burrowing owl (*Athene cunicularia*) may occur within your project area. Burrowing owls are protected from take by the Migratory Bird Treaty Act and under New Mexico state statute. Before any ground disturbing activities occur, the Department recommends that a preliminary burrowing owl survey be conducted by a qualified biologist using the Department's [Burrowing Owl Survey Protocol](#). Should burrowing owls be documented in the project area, please contact the Department or USFWS for further recommendations regarding relocation or avoidance of impacts.

Prairie dog colonies may occur within the vicinity of your project area. Both black-tailed prairie dogs (*Cynomys ludovicianus*) and Gunnison's prairie dogs (*Cynomys gunnisoni*) are designated as New Mexico SGCN, and their colonies provide important habitat for other grassland wildlife. Wherever possible, occupied prairie dog colonies should be left undisturbed, and all project activities should be directed off the colony. Any burrows that are located on the project site should be surveyed by a qualified biologist to determine whether burrows are active or inactive and whether burrowing owls may be utilizing the site. Colonies within the range of the black-tailed prairie dog can be surveyed by a qualified biologist diurnally, year-round using binoculars. Colonies within the range of the Gunnison's prairie dog can be surveyed by a qualified biologist diurnally, using binoculars during the warmer months from April through October and by searching for fairly fresh scat and lack of cobwebs or debris at the mouths of burrows during the cold months (November through March). If ground-disturbing activities cannot be relocated off the prairie dog colony, or if project activities involve control of prairie dogs, the Department recommends live-trapping and relocation of prairie dogs. The Department can provide recommendations regarding suitability of potential translocation areas and procedures.



---

**Disclaimers regarding recommendations:**

- The Department provides technical guidance to support the persistence of all protected species of native fish and wildlife, including game and nongame wildlife species. Species listed within this report include those that have been documented to occur within the project area, and others that may not have been documented but are projected to occur within the project vicinity.
- Recommendations are provided by the Department under the authority of § 17-1-5.1 New Mexico Statutes Annotated 1978, to provide "communication and consultation with federal and other state agencies, local governments and communities, private organizations and affected interests responsible for habitat, wilderness, recreation, water quality and environmental protection to ensure comprehensive conservation services for hunters, anglers and nonconsumptive wildlife users".
- The Department has no authority for management of plants or Important Plant Areas. The [New Mexico Endangered Plant Program](#), under the Energy, Minerals, and Natural Resources Department's Forestry Division, identifies and develops conservation measures necessary to ensure the survival of plant species within New Mexico. Plant status information is provided within this report as a courtesy to users. Recommendations provided within the ERT may not be sufficient to preclude impacts to rare or sensitive plants, unless conservation measures are identified in coordination with the Endangered Plant Program.
- Additional coordination and/or consultation may also be necessary under the federal ESA or National Environmental Policy Act (NEPA). Further site-specific mitigation recommendations may be proposed during ESA consultation and/or NEPA analyses or through coordination with affected federal agencies.