



---

## PROJECT INFORMATION

---

**Project Title:** Ciudad Hoffman Private Property Thinning  
**Project Type:** FOREST VEGETATION MANAGEMENT/RESTORATION  
**Latitude/Longitude (DMS):** 35.106991 / -106.329298  
**County(s):** BERNALILLO  
**Project Description:** Thinning to reduce the risk of catastrophic wildfire.

## REQUESTOR INFORMATION

---

**Project Organization:**  
**Contact Name:** Marissa Goodwin  
**Email Address:** marissa.goodwin@emnrd.nm.gov  
**Organization:** New Mexico Energy Minerals and Natural Resources Department - State Forestry  
Division  
**Address:** 5105 Santa Fe Hills Blvd, Rio Rancho NM 87144  
**Phone:** 5057095315

## OVERALL STATUS

---

This report contains an initial list of recommendations regarding potential impacts to wildlife or wildlife habitats from the proposed project; see the Project Recommendations section below for further details. Your project proposal is being forwarded to a New Mexico Department of Game and Fish (Department) biologist for review to determine whether there are any additional recommendations regarding the proposed actions. A Department biologist will be in touch within 30 days if there are further recommendations regarding this project proposal.



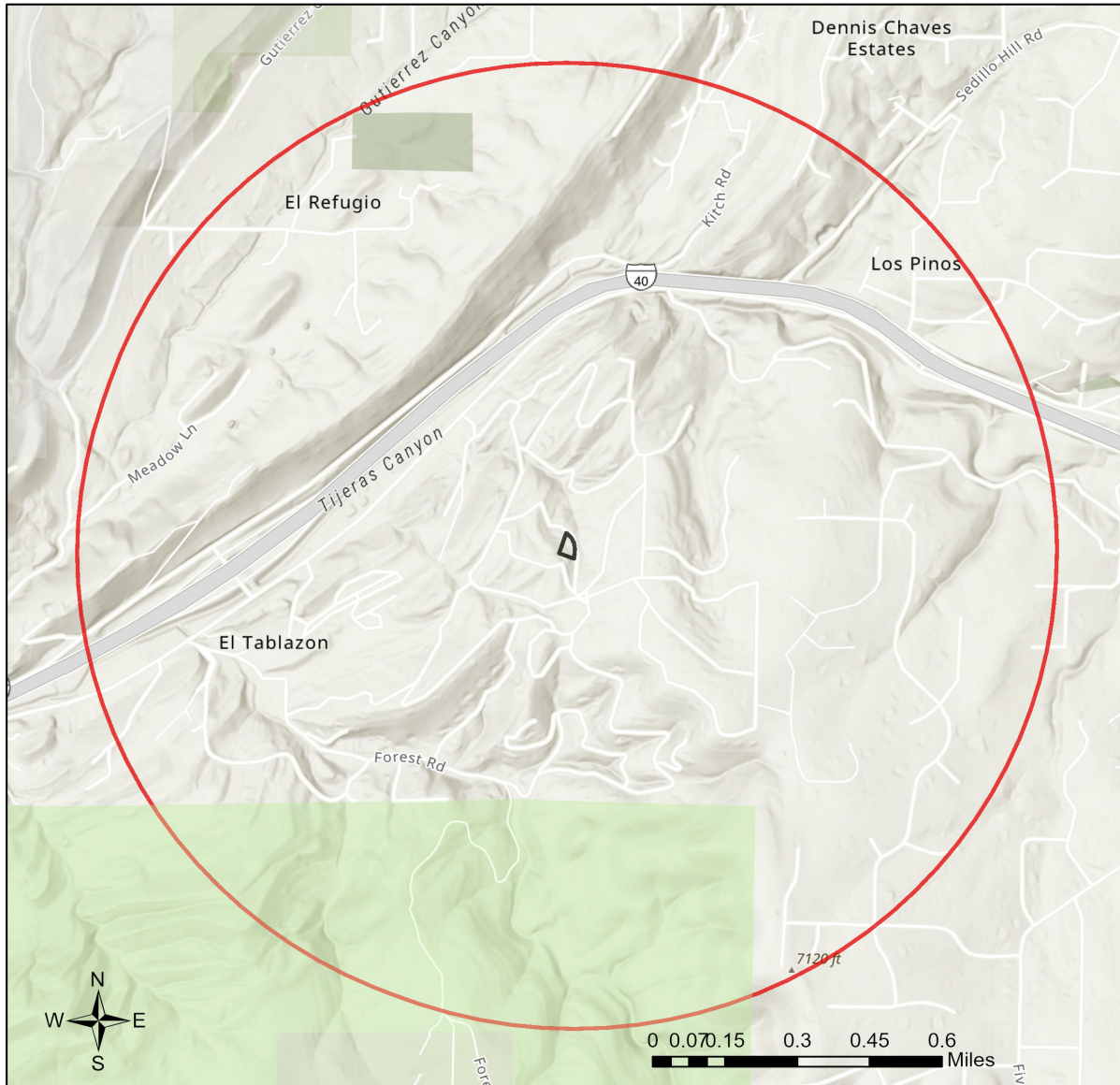
---

### About this report:

- This environmental review is based on the project description and location that was entered. The report must be updated if the project type, area, or operational components are modified.
- This is a preliminary environmental screening assessment and report. It is not a substitute for the potential wildlife knowledge gained by having a biologist conduct a field survey of the project area. Federal status and plant data are provided as a courtesy to users. The review is also not intended to replace consultation required under the federal Endangered Species Act (ESA), including impact analyses for federal resources from the U.S. Fish and Wildlife Service (USFWS) using their [Information for Planning and Consultation tool](#).
- This report contains information on wildlife species protected under the ESA and the [Wildlife Conservation Act \(WCA\)](#), [Species of Greatest Conservation Need \(SGCN\)](#), and Species of Economic and Recreational Importance (SERI). Species listed under the ESA are protected from take at the federal level and under the WCA are protected from take at the state level. SGCN are identified in the [State Wildlife Action Plan \(SWAP\) for New Mexico](#); all of these species are considered to be of conservation concern but not all of them are protected from take at the state or federal level. The harvest of all SERI is regulated at the state level. The Department has no authority to designate critical habitat for species listed under the WCA; only the USFWS can designate critical habitat for species listed under the ESA.
- The New Mexico Environmental Review Tool (ERT) utilizes species observation locations and species habitat suitability models, both of which are subject to ongoing change and refinement. Inclusion or omission of a species within a report cannot guarantee species presence or absence within your project area. To determine occurrence of any species listed in this report, or other wildlife that may be present within your project area, onsite surveys conducted by a qualified biologist during appropriate, species-specific survey timelines may be necessary.
- The Department encourages use of the ERT to modify proposed projects for avoidance, minimization, or mitigation of wildlife impacts. However, the ERT is not intended to be used in a repeatedly iterative fashion to adjust project attributes until a previously determined recommendation is generated. The ERT serves to assess impacts once project details are developed. The [New Mexico Crucial Habitat Assessment Tool](#), the data layers from which are included in the ERT, is the appropriate system for advising early-stage project planning and design to avoid areas of anticipated wildlife concerns and associated regulatory requirements.



## Ciudad Hoffman Private Property Thinning



NHNM, USGS, USFS, US Census Bureau, NMDGF  
Esri, NASA, NGA, USGS, FEMA  
City of Albuquerque, Bernalillo County, NM, Texas Parks & Wildlife, Esri, TomTom, Garmin, SafeGraph, GeoTechnologies, Inc, METI/NASA, USGS, Bureau of Land Management, EPA, NPS, US Census



**Special Status Animal Species Potentially within 1 Miles of Project Area**

Common Name	Scientific Name	USFWS (ESA)	NMDGF (WCA)	NMDGF SGCN/SERI	USFS	USFS SCC	BLM
<a href="#">Boreal Chorus Frog</a>	<a href="#">Pseudacris maculata</a>			SGCN			
<a href="#">Northern Leopard Frog</a>	<a href="#">Lithobates pipiens</a>			SGCN	Sensitive Species	USFS R3 SCC	BLM SENSITIVE
<a href="#">American Bittern</a>	<a href="#">Botaurus lentiginosus</a>			SGCN			BLM WATCH
<a href="#">Aplomado Falcon</a>	<a href="#">Falco femoralis</a>		E	SGCN			
<a href="#">Peregrine Falcon</a>	<a href="#">Falco peregrinus</a>		T	SGCN			BLM WATCH
<a href="#">Mountain Plover</a>	<a href="#">Charadrius montanus</a>			SGCN	Sensitive Species		BLM WATCH
<a href="#">Flammulated Owl</a>	<a href="#">Otus flammeolus</a>			SGCN			BLM WATCH
<a href="#">Western Burrowing Owl</a>	<a href="#">Athene cucularia hypugaea</a>			SGCN	Sensitive Species	USFS R3 SCC	BLM SENSITIVE
<a href="#">Common Nighthawk</a>	<a href="#">Chordeiles minor</a>			SGCN			
<a href="#">Lewis's Woodpecker</a>	<a href="#">Melanerpes lewis</a>			SGCN		USFS R3 SCC	BLM WATCH
<a href="#">Red-Headed Woodpecker</a>	<a href="#">Melanerpes erythrocephalus</a>			SGCN			
<a href="#">Williamson's Sapsucker</a>	<a href="#">Sphyrapicus thyroideus</a>			SGCN			
<a href="#">Olive-Sided Flycatcher</a>	<a href="#">Contopus cooperi</a>			SGCN			
<a href="#">Bank Swallow</a>	<a href="#">Riparia riparia</a>			SGCN			
<a href="#">Pinyon Jay</a>	<a href="#">Gymnorhinus cyanocephalus</a>			SGCN		USFS R3 SCC	BLM SENSITIVE
<a href="#">Clark's Nutcracker</a>	<a href="#">Nucifraga columbiana</a>			SGCN			
<a href="#">Juniper Titmouse</a>	<a href="#">Baeolophus ridgwayi</a>			SGCN		USFS R3 SCC	BLM WATCH
<a href="#">Pygmy Nuthatch</a>	<a href="#">Sitta pygmaea</a>			SGCN			
<a href="#">Western Bluebird</a>	<a href="#">Sialia mexicana</a>			SGCN			
<a href="#">Mountain Bluebird</a>	<a href="#">Sialia currucoides</a>			SGCN			
<a href="#">Loggerhead Shrike</a>	<a href="#">Lanius ludovicianus</a>			SGCN		USFS R3 SCC	BLM WATCH
<a href="#">Gray Vireo</a>	<a href="#">Vireo vicinior</a>		T	SGCN	Sensitive Species	USFS R3 SCC	BLM WATCH
<a href="#">Black-Throated Gray Warbler</a>	<a href="#">Setophaga nigrescens</a>			SGCN			BLM WATCH



**Special Status Animal Species Potentially within 1 Miles of Project Area**

Common Name	Scientific Name	USFWS (ESA)	NMDGF (WCA)	NMDGF SGCN/SERI	USFS	USFS SCC	BLM
<a href="#">Grace's Warbler</a>	<a href="#">Setophaga graciae</a>			SGCN		USFS R3 SCC	BLM WATCH
<a href="#">Thick-billed Longspur</a>	<a href="#">Rhynchophanes mccownii</a>			SGCN			BLM SENSITIVE
<a href="#">Chestnut-Collared Longspur</a>	<a href="#">Calcarius ornatus</a>			SGCN			BLM SENSITIVE
<a href="#">Cassin's Finch</a>	<a href="#">Haemorhous cassinii</a>			SGCN			BLM WATCH
<a href="#">Evening Grosbeak</a>	<a href="#">Coccothraustes vespertinus</a>			SGCN			
<a href="#">Spotted Bat</a>	<a href="#">Euderma maculatum</a>		T	SGCN	Sensitive Species	USFS R3 SCC	BLM SENSITIVE
<a href="#">Pale Townsend's Big-Eared Bat</a>	<a href="#">Corynorhinus townsendii pallescens</a>			SGCN	Sensitive Species	USFS R3 SCC	BLM SENSITIVE
<a href="#">New Mexican Meadow Jumping Mouse</a>	<a href="#">Zapus hudsonius luteus</a>	LE	E	SGCN	Sensitive Species		BLM SENSITIVE
<a href="#">Black Bear</a>	<a href="#">Ursus americanus</a>			SGCN			
<a href="#">Mountain Lion</a>	<a href="#">Puma concolor</a>			SGCN			
<a href="#">Elk</a>	<a href="#">Cervus canadensis</a>			SGCN			
<a href="#">Mule Deer</a>	<a href="#">Odocoileus hemionus</a>			SGCN			
<a href="#">Pronghorn</a>	<a href="#">Antilocapra americana</a>			SGCN			

Common Name hyperlink takes you to species account in [bison-m.org](http://bison-m.org); Scientific Name hyperlink takes you to information in [NatureServe Explorer](#); ESA = Endangered Species Act, C = Candidate, LE = Listed Endangered, LT = Listed Threatened, XN = Non-essential Experimental Population, for other ESA codes see this [website](#); WCA = Wildlife Conservation Act, E = Endangered, T = Threatened; SERI = Species of Economic and Recreational Importance; SGCN = Species of Greatest Conservation Need; USFS = U.S. Forest Service, Sensitive Species = A species likely to occur on USFS lands that is of concern for a potential reduction in population viability; SCC = Species of Conservation Concern; BLM = Bureau of Land Management, BLM SENSITIVE = A species that occurs on BLM lands and whose viability is at risk, BLM WATCH = Species that may be added to the sensitive species list in future pending new information regarding species status.



---

## Project Recommendations

Your proposed project activities may require a custom review for assessment of potential effects to wildlife. See the "OVERALL STATUS" section above to determine the likelihood that your project will be reviewed further based on its location. A Department biologist will confirm whether any additional conservation measures are needed. You should expect to receive any additional project recommendations within 30 days of your project submission. If the "OVERALL STATUS" section indicates that no further consultation with the Department is required based on its location, then you will only receive additional project feedback from the Department if a biologist deems it necessary.

All migratory birds are protected against direct take under the federal [Migratory Bird Treaty Act](#) (16 U.S.C. Sections 703-712), and hawks, falcons, vultures, owls, songbirds, and other insect-eating birds are protected under New Mexico State Statutes (17-2-13 and 17-2-14 NMSA), unless permitted by the applicable regulatory agency. To minimize the likelihood of adverse impacts to migratory birds, nests, eggs, or nestlings, the Department recommends that ground disturbance and vegetation removal activities be conducted outside of the primary migratory bird breeding season of April 15-September 1. Breeding season may begin earlier for raptors or when working in low-elevation habitats such as deserts. If ground disturbing and clearing activities must be conducted during the breeding season, the area should be surveyed for active nest sites (with birds or eggs present in the nesting territory) and avoid disturbing active nests until young have fledged. For active nests, establish adequate buffer zones to minimize disturbance to nesting birds. Buffer distances should be at least 100 feet from songbird and raven nests; 0.25 miles from most raptor nests; and 0.5 miles for ferruginous hawk (*Buteo regalis*), golden eagle (*Aquila chrysaetos canadensis*), peregrine falcon (*Falco peregrinus*), and prairie falcon (*Falco mexicanus*) nests. Active nest sites in trees or shrubs that must be removed should be mitigated by qualified biologists or wildlife rehabilitators. Department biologists are available to consult on nest site mitigation and can facilitate contact with qualified personnel.

The list of [New Mexico SGCN](#) (see link, page 14, table 5) and the federal list of [Birds of Conservation Concern](#) should be reviewed to fully evaluate potential effects to migratory birds from your proposed project. Federal agencies are also required under Executive Order 13186 to implement standards and practices that lessen the amount of unintentional take attributable to agency actions. These conservation measures are strongly recommended to ensure persistence of migratory bird species whose populations are small and/or declining within New Mexico.

For forestry and forest restoration projects, including fire management activities, occurring in ponderosa pine forests, the Department recommends following the [Ponderosa Pine Restoration Guidelines to Benefit Wildlife](#).



For projects involving the use of herbicide application, the Department has the following recommendations to mitigate impacts to wildlife:

- To mitigate the potential for herbicide drift into sensitive aquatic and native riparian habitats, the Department recommends applying a minimum buffer of 20 ft (for spot applications), 100ft (if using ground application), 350 ft (if using low-altitude aerial spraying), or 1,320 ft (if using high-altitude aerial spraying; [USFWS 2007](#)) around all aquatic habitats and native riparian vegetation in the proposed treatment area.
- To mitigate the potential for herbicide drift into sensitive habitats for federally- or state-listed species, the Department recommends applying a minimum buffer of 10 ft (for spot applications), 90 ft (if using ground application), 300 ft (if using low-altitude aerial spraying), or 1,320 ft (if using high-altitude aerial spraying) around all known terrestrial habitats for federally- or state-listed species. Buffer distances are larger for insect pollinators of federally- or state-listed plants (2,640 ft for small pollinators, 10,560 ft for large pollinators such as bumble bees) ([USFWS 2007](#)).
- Use mechanical weed removal techniques or individual plant treatments when buffers cannot be implemented and federally- or state-listed species habitats are present.
- Apply herbicides directly to target plants, rather than broadly to large areas, whenever possible to avoid harming nearby non-target or native vegetation.
- Avoid herbicide spraying on days when wind speeds are high (> 10 mph) and on days when heavy rain is expected within 24 hours.
- Use the lowest concentration possible that will still allow for achievement of the desired result.
- Avoid applying herbicides to and removing vegetation that is being used by birds for nesting. When nesting birds may be present in target vegetation in the project area, herbicides should be applied outside of the breeding bird season (April – September).
- In areas dominated by undesired or non-native plants, habitat loss may occur if herbicide is applied to the entire area, resulting in a total loss of vegetation. To avoid this, apply herbicides in a mosaic pattern, alternating treated and non-treated sites between years.
- The Department recommends not using herbicides that contain the following chemicals that have been found to be slightly to highly toxic to wildlife including birds, fish, and pollinators: 2,4-D, dichlobenil, dichlorprop, fluazifop, glyphosate, oxyfluorfen, propryzamide, quizalofop, sulfometuron, and triclopyr ([Michael 2002](#)).

The proposed project occurs within or near a riparian area. Because riparian areas are important wildlife habitats, the project footprint should avoid removing any riparian vegetation or creating ground disturbance either directly within or affecting the riparian area, unless the project is intended to restore riparian habitat through non-native plant removal and replanting with native species. If your project involves removal of non-native riparian trees or planting of native riparian vegetation, please refer to the Department's habitat handbook guideline for [Restoration and Management of Native and Non-native Trees in Southwestern Riparian Ecosystems](#). The [New Mexico Riparian Habitat Map \(NMRipMap\)](#) may also provide useful information on local riparian habitat composition and structure.

Your project is on or near a section of road that has experienced comparatively high incidence of wildlife-vehicle collisions. Coordinate with the New Mexico Department of Transportation to consider implementing mitigation actions that are appropriate to your project area and planned action to reduce wildlife-vehicle collisions. These may include but are not limited to: installation of wildlife-proof fencing; installation of wildlife passages such as arch culverts or overpasses; and installation of animal detection systems.



---

**Disclaimers regarding recommendations:**

- The Department provides technical guidance to support the persistence of all protected species of native fish and wildlife, including game and nongame wildlife species. Species listed within this report include those that have been documented to occur within the project area, and others that may not have been documented but are projected to occur within the project vicinity.
- Recommendations are provided by the Department under the authority of § 17-1-5.1 New Mexico Statutes Annotated 1978, to provide "communication and consultation with federal and other state agencies, local governments and communities, private organizations and affected interests responsible for habitat, wilderness, recreation, water quality and environmental protection to ensure comprehensive conservation services for hunters, anglers and nonconsumptive wildlife users".
- The Department has no authority for management of plants or Important Plant Areas. The [New Mexico Endangered Plant Program](#), under the Energy, Minerals, and Natural Resources Department's Forestry Division, identifies and develops conservation measures necessary to ensure the survival of plant species within New Mexico. Plant status information is provided within this report as a courtesy to users. Recommendations provided within the ERT may not be sufficient to preclude impacts to rare or sensitive plants, unless conservation measures are identified in coordination with the Endangered Plant Program.
- Additional coordination and/or consultation may also be necessary under the federal ESA or National Environmental Policy Act (NEPA). Further site-specific mitigation recommendations may be proposed during ESA consultation and/or NEPA analyses or through coordination with affected federal agencies.