



PROJECT INFORMATION

Project Title: Kit Carson Electric
Project Type: RURAL DEVELOPMENT, UTILITIES
Latitude/Longitude (DMS): 36.215611 / -106.448712
County(s): RIO ARRIBA
Project Description: Kit Carson is planning a Fiber Optic line project for rural areas in Rio Arriba County. Kit Carson Electric Co-operative has prepared this Draft Plan of Development (POD) describing the proposed construction and operation of a Fiber optic line along pre-existing electric corridors that are owned and operated by Jemez Mountain Electric Co-operative. This project will take place on public land administered by the U.S. Department of the Interior, Bureau of Land Management/Farmington (Taos) Field Office (BLM), in addition to land administered by Carson National Forest and Santa Fe National Forest. The proposed project is located in Rio Arriba County, New Mexico, along an already existing utility corridor administered by Jemez Mountain Electric Co-operative, beginning in Gallina, and ending in Chili New Mexico. In order to construct, operate, and maintain a new fiber optic line across BLM, US Forest Service lands, State land, and DOD holdings, a broadband proposal for the placement of the fiber optic line from the USFS' Broadband Action Team (BAT) is sought. The proposed new fiber optic line is proposed to be underground and within the pre-existing utility corridors owned and operated by Jemez Mountains Electric Co-Op. A pre-existing memorandum has been attached that details the relationship between JMEC and Kit Carson EC. The grant process has been initiated by the United States Department of Agriculture's Connect3 Grant Program via Standard Form 299 (SF299). This POD follows guidance from the USFS Broadband's Request for Attachments outlined in Obtaining a permit.

REQUESTOR INFORMATION

Project Organization:
Contact Name: Daniel Velasco
Email Address: dvelasco@tierra-row.com
Organization: Tierra Right-of-Way
Address: 1575 E River Rd Ste 201, Tucson, AZ 85718, Tucson AZ 85718
Phone: 520-918-2348

OVERALL STATUS

This report contains an initial list of recommendations regarding potential impacts to wildlife or wildlife habitats from the proposed project; see the Project Recommendations section below for further details. Your project proposal is being forwarded to a New Mexico Department of Game and Fish (Department) biologist for review to determine whether there are any additional recommendations regarding the proposed actions. A Department biologist will be in touch within 30 days if there are further recommendations regarding this project proposal.

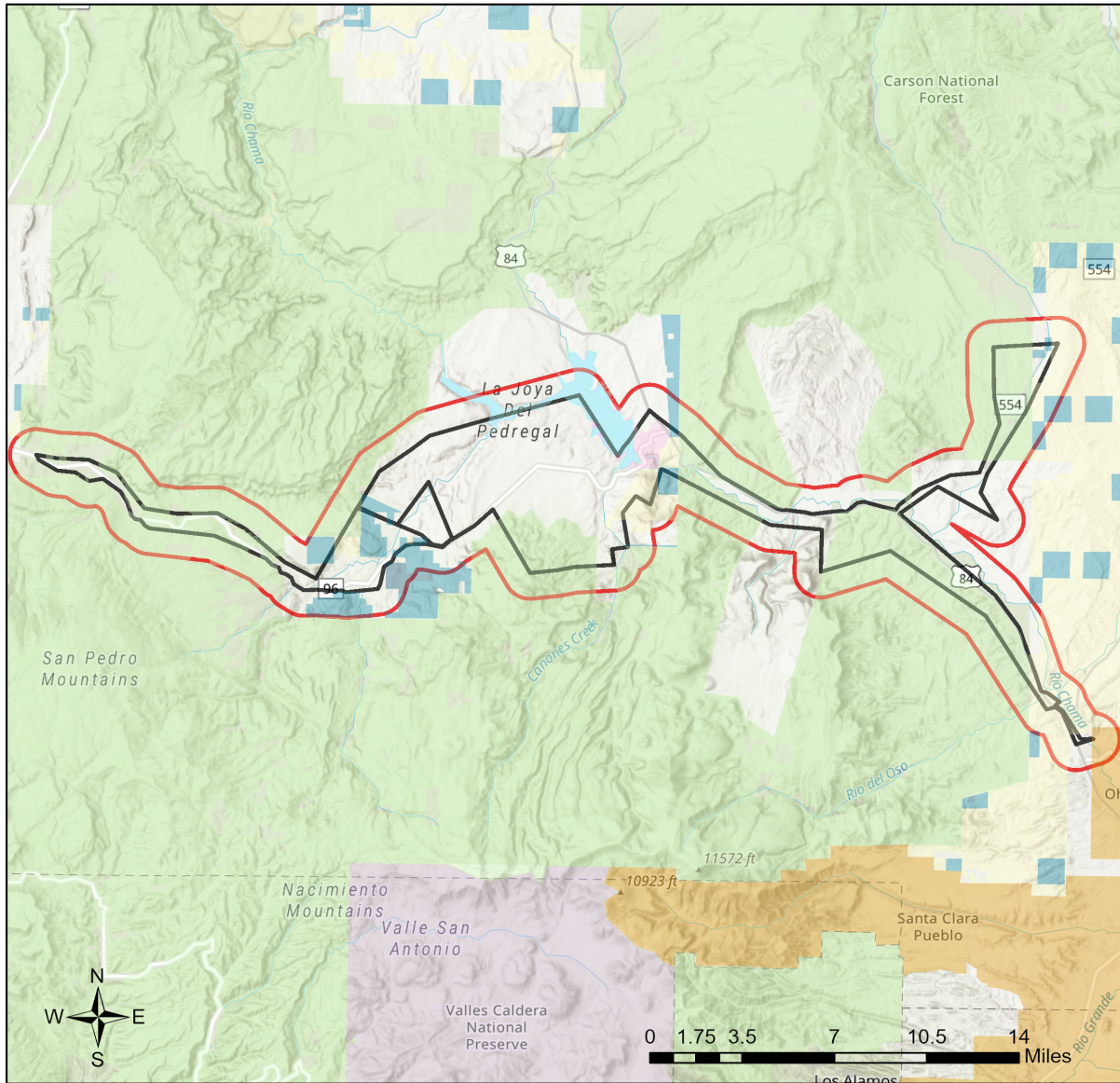


About this report:

- This environmental review is based on the project description and location that was entered. The report must be updated if the project type, area, or operational components are modified.
- This is a preliminary environmental screening assessment and report. It is not a substitute for the potential wildlife knowledge gained by having a biologist conduct a field survey of the project area. Federal status and plant data are provided as a courtesy to users. The review is also not intended to replace consultation required under the federal Endangered Species Act (ESA), including impact analyses for federal resources from the U.S. Fish and Wildlife Service (USFWS) using their [Information for Planning and Consultation tool](#).
- This report contains information on wildlife species protected under the ESA and the [Wildlife Conservation Act \(WCA\)](#), [Species of Greatest Conservation Need \(SGCN\)](#), and Species of Economic and Recreational Importance (SERI). Species listed under the ESA are protected from take at the federal level and under the WCA are protected from take at the state level. SGCN are identified in the [State Wildlife Action Plan \(SWAP\) for New Mexico](#); all of these species are considered to be of conservation concern but not all of them are protected from take at the state or federal level. The harvest of all SERI is regulated at the state level. The Department has no authority to designate critical habitat for species listed under the WCA; only the USFWS can designate critical habitat for species listed under the ESA.
- The New Mexico Environmental Review Tool (ERT) utilizes species observation locations and species habitat suitability models, both of which are subject to ongoing change and refinement. Inclusion or omission of a species within a report cannot guarantee species presence or absence within your project area. To determine occurrence of any species listed in this report, or other wildlife that may be present within your project area, onsite surveys conducted by a qualified biologist during appropriate, species-specific survey timelines may be necessary.
- The Department encourages use of the ERT to modify proposed projects for avoidance, minimization, or mitigation of wildlife impacts. However, the ERT is not intended to be used in a repeatedly iterative fashion to adjust project attributes until a previously determined recommendation is generated. The ERT serves to assess impacts once project details are developed. The [New Mexico Crucial Habitat Assessment Tool](#), the data layers from which are included in the ERT, is the appropriate system for advising early-stage project planning and design to avoid areas of anticipated wildlife concerns and associated regulatory requirements.



Kit Carson Electric



- | | | |
|---------------------------|------------------------------|---|
| Buffered Project Boundary | NM Department of Game & Fish | Tribal Land |
| Project_Boundary | NM State Forestry Division | U.S. Army Corps of Engineers |
| Bureau of Land Management | NM State Parks | U.S. Bureau of Reclamation |
| City Land | National Park Service | U.S. Department of Agriculture |
| County Land | Private | U.S. Fish and Wildlife Service |
| Department of Defense | State Land Office | U.S. Forest Service |
| Department of Energy | State of New Mexico | U.S. Natural Resources Conservation Service |

NHNM, USGS, USFS, US Census Bureau, NMDGF
 Esri, CGIAR, USGS
 Texas Parks & Wildlife, Esri, TomTom, Garmin, SafeGraph, FAO, METI/NASA, USGS, Bureau of Land Management, EPA, NPS, USFWS



Special Status Animal Species Potentially within 1 Miles of Project Area

Common Name	Scientific Name	USFWS (ESA)	NMDGF (WCA)	NMDGF SGCN/SERI	USFS	USFS SCC	BLM
Jemez Mountains Salamander	Plethodon neomexicanus	LE	E	SGCN			
Western Toad	Anaxyrus boreas	PS	E	SGCN	Sensitive Species	USFS R3 SCC	
Boreal Chorus Frog	Pseudacris maculata			SGCN			
Plains Leopard Frog	Lithobates blairi			SGCN			BLM WATCH
Northern Leopard Frog	Lithobates pipiens			SGCN	Sensitive Species	USFS R3 SCC	BLM SENSITIVE
Fared Grebe	Podiceps nigricollis			SGCN			
Clark's Grebe	Aechmophorus clarkii			SGCN			
American Bittern	Botaurus lentiginosus			SGCN			BLM WATCH
Bald Eagle	Haliaeetus leucocephalus		T	SGCN	Sensitive Species		BLM SENSITIVE
Peregrine Falcon	Falco peregrinus		T	SGCN			BLM WATCH
American Peregrine Falcon	Falco peregrinus anatum		T	SGCN	Sensitive Species	USFS R3 SCC	
Mountain Plover	Charadrius montanus			SGCN	Sensitive Species		BLM WATCH
Flammulated Owl	Otus flammeolus			SGCN			BLM WATCH
Western Burrowing Owl	Athene cunicularia hypugaea			SGCN	Sensitive Species	USFS R3 SCC	BLM SENSITIVE
Mexican Spotted Owl	Strix occidentalis lucida	LT		SGCN			
Boreal Owl	Aegolius funereus		T	SGCN	Sensitive Species	USFS R3 SCC	
Common Nighthawk	Chordeiles minor			SGCN			
Lewis's Woodpecker	Melanerpes lewis			SGCN		USFS R3 SCC	BLM WATCH
Red-Headed Woodpecker	Melanerpes erythrocephalus			SGCN			
Williamson's Sapsucker	Sphyrapicus thyroideus			SGCN			
Olive-Sided Flycatcher	Contopus cooperi			SGCN			
Southwestern Willow Flycatcher	Empidonax traillii extimus	LE	E	SGCN			
Bank Swallow	Riparia riparia			SGCN			



Special Status Animal Species Potentially within 1 Miles of Project Area

Common Name	Scientific Name	USFWS (ESA)	NMDGF (WCA)	NMDGF SGCN/SERI	USFS	USFS SCC	BLM
Pinyon Jay	Gymnorhinus cyanocephalus			SGCN		USFS R3 SCC	BLM SENSITIVE
Clark's Nutcracker	Nucifraga columbiana			SGCN			
Juniper Titmouse	Baeolophus ridgwayi			SGCN		USFS R3 SCC	BLM WATCH
Pygmy Nuthatch	Sitta pygmaea			SGCN			
Western Bluebird	Sialia mexicana			SGCN			
Mountain Bluebird	Sialia currucoides			SGCN			
Bendire's Thrasher	Toxostoma bendirei			SGCN		USFS R3 SCC	BLM SENSITIVE
Loggerhead Shrike	Lanius ludovicianus			SGCN		USFS R3 SCC	BLM WATCH
Gray Vireo	Vireo vicinior		T	SGCN	Sensitive Species	USFS R3 SCC	BLM WATCH
Virginia's Warbler	Leiothlypis virginiae			SGCN			BLM SENSITIVE
Black-Throated Gray Warbler	Setophaga nigrescens			SGCN			BLM WATCH
Grace's Warbler	Setophaga graciae			SGCN		USFS R3 SCC	BLM WATCH
Vesper Sparrow	Poocetes gramineus			SGCN			
Chestnut-Collared Longspur	Calcarius ornatus			SGCN			BLM SENSITIVE
Brown-Capped Rosy-Finch	Leucosticte australis			SGCN			
Cassin's Finch	Haemorhous cassinii			SGCN			BLM WATCH
Evening Grosbeak	Coccothraustes vespertinus			SGCN			
Cutthroat Trout	Oncorhynchus clarkii			SERI			
Rio Grande Cutthroat Trout	Oncorhynchus clarkii virginalis			SERI			
Rainbow Trout	Oncorhynchus mykiss			SERI			
Brown Trout	Salmo trutta			SERI			
Rio Grande Chub	Gila pandora			SGCN	Sensitive Species	USFS R3 SCC	BLM SENSITIVE



Special Status Animal Species Potentially within 1 Miles of Project Area

Common Name	Scientific Name	USFWS (ESA)	NMDGF (WCA)	NMDGF SGCN/SERI	USFS	USFS SCC	BLM
Rio Grande Sucker	Catostomus plebeius			SGCN	Sensitive Species		BLM SENSITIVE
Spotted Bat	Euderma maculatum		T	SGCN	Sensitive Species	USFS R3 SCC	BLM SENSITIVE
Pale Townsend's Big-Eared Bat	Corynorhinus townsendii pallescens			SGCN	Sensitive Species	USFS R3 SCC	BLM SENSITIVE
American Pika	Ochotona princeps			SGCN			
Black-Tailed Prairie Dog	Cynomys ludovicianus			SGCN	Sensitive Species		BLM SENSITIVE
Gunnison's Prairie Dog	Cynomys gunnisoni			SGCN	Sensitive Species		BLM SENSITIVE
New Mexican Meadow Jumping Mouse	Zapus hudsonius luteus	LE	E	SGCN	Sensitive Species		BLM SENSITIVE
Black Bear	Ursus americanus			SGCN			
Pacific Marten	Martes caurina		T	SGCN		USFS R3 SCC	
Mountain Lion	Puma concolor			SGCN			
Elk	Cervus canadensis			SGCN			
Mule Deer	Odocoileus hemionus			SGCN			
Pronghorn	Antilocapra americana			SGCN			
Plainbelly Water Snake	Nerodia erythrogaster		E	SGCN			
Desert Massasauga	Sistrurus catenatus edwardsii			SGCN			
Monarch Butterfly	Danaus plexippus	C		SGCN			BLM SENSITIVE

Common Name hyperlink takes you to species account in bison-m.org; Scientific Name hyperlink takes you to information in [NatureServe Explorer](#); ESA = Endangered Species Act, C = Candidate, LE = Listed Endangered, LT = Listed Threatened, XN = Non-essential Experimental Population, for other ESA codes see this [website](#); WCA = Wildlife Conservation Act, E = Endangered, T = Threatened; SERI = Species of Economic and Recreational Importance; SGCN = Species of Greatest Conservation Need; USFS = U.S. Forest Service, Sensitive Species = A species likely to occur on USFS lands that is of concern for a potential reduction in population viability; SCC = Species of Conservation Concern; BLM = Bureau of Land Management, BLM SENSITIVE = A species that occurs on BLM lands and whose viability is at risk, BLM WATCH = Species that may be added to the sensitive species list in future pending new information regarding species status.



Special Status Plant Species Potentially within 1 Miles of Project Area

Common Name	Scientific Name	USFWS (ESA)	NMAC	NMRPCS	USFS	USFS SCC	BLM
Grama Grass Cactus	Sclerocactus papyracanthus						BLM WATCH
Cyanic Milkvetch	Astragalus cyaneus			SS			BLM WATCH
A Milkvetch	Astragalus iodopetalus			SS			
Chaco Milkvetch	Astragalus micromerius			SS	Sensitive Species	USFS R3 SCC	BLM WATCH
Galisteo Sand Verbena	Abronia bigelovii			SS	Sensitive Species	USFS R3 SCC	BLM SENSITIVE

NMAC = New Mexico Administrative Code, E = Endangered; NMRPCS = [New Mexico Rare Plant Conservation Strategy](#), SS = NM Rare Plant Conservation Strategy Species; USFS = U.S. Forest Service, Sensitive Species = A species likely to occur on USFS lands that is of concern for a potential reduction in population viability; SCC = Species of Conservation Concern; BLM = Bureau of Land Management, BLM SENSITIVE = A species that occurs on BLM lands and whose viability is at risk, BLM WATCH = Species that may be added to the sensitive species list in future pending new information regarding species status.



Project Recommendations

With implementation of the applicable mitigation or avoidance measures included in the project description, and incorporation of the guidance listed below, the Department does not anticipate significant impacts to wildlife or sensitive wildlife habitats from the proposed project activities. See the "OVERALL STATUS" section above to determine the likelihood that your project will be reviewed further based on its location. If a Department biologist determines that additional conservation measures are needed, then you should expect to receive notification and/or any additional project recommendations within 30 days of your project submission.



Open trenches excavated for underground water or oil and gas pipelines, powerlines, or fiber optic communication lines can unintentionally entrap and cause the unnecessary mortality of amphibians, reptiles, and small mammals, and can cause injury to large mammals. Trapped animals can die from exposure, starvation, crushing from pipe-laying, entombment from trenching backfilling, drowning, and predation. This unnecessary wildlife mortality can be avoided by implementing conservation measures including: concurrent trenching, pipe-laying, and backfilling operations to minimize the amount of trench left open overnight or longer; construction escape ramps; and employing biological monitors to remove trapped animals. Periods of highest activity for amphibians and reptiles vulnerable to entrapment include summer months and wet weather, and they can be active both day and night. Small mammals subject to entrapment are active year-round and generally most active at night.

Implementing the general trenching conservation measures outlined in the Department's [Trenching Project Guidelines](#) will help minimize unnecessary mortality of wildlife. Best management practices should include, at minimum, the following mitigation measures.

- Whenever possible, locate trenching activities within previously disturbed areas, such as existing road or pipeline right-of-ways. To the extent possible, avoid trenching in undisturbed habitat.
- Trench during the cooler months (October – March).
- Utilize concurrent trenching, pipe- or cable-laying, and backfilling. Keep trenching, pipe- or cable-laying, and backfilling crews as close together as possible to minimize the amount of open trench at any given time. When trenching activities are temporarily halted (e.g., overnight, weekends, holidays, weather shutdowns), protect wildlife from accessing any open trench between digging and backfilling operations by using one or more of the methods described below.
- Avoid leaving trenches open overnight. When trenches cannot be backfilled immediately, escape ramps should be constructed at least every 90 meters and preferably 30 meters. Escape ramps can be constructed parallel or perpendicular to the existing trench. The escape ramp slope should be less than 45 degrees (1:1). If pipe or cable has been installed but backfilling has not occurred, escape ramps may need to be constructed on both sides of the trench, since, unless the pipe is elevated enough to allow animals to move underneath it, the pipe or cable may block access of amphibians, reptiles, and small mammals to the ramps if only constructed on one side.
- Trenches that have been left open overnight should be inspected the following day by a qualified biological monitor and trapped animals removed as soon as possible, especially where state- or federally-listed threatened or endangered amphibians, reptiles, or small mammals occur. Untrained personnel should not attempt to remove trapped wildlife because of the potential to injure animals and the possibility of injury from venomous snakes. Required tools for removal will include snake tongs for removing snakes and a dip net for capturing and removing amphibians and small mammals. Many animals trapped in a trench will burrow under loose soil. To the extent possible, the biological monitor should disturb loose soil in the trench to uncover and remove trapped animals. Animals should be relocated at least 50 meters away from the open trench in undisturbed habitat.
- When pipe has been laid in the trench, end caps should be placed on the open end(s) of the pipe to preclude animals from entering. Pipe staged outside the trench should be capped until placed in the trench or checked for wildlife before being placed into the trench.
- Most wildlife can be protected by constructing silt fence completely around the open trench. Silt fence should be supported from sagging by t-posts, rebar, or stakes and buried at the base to preclude animals from moving below the fence. If construction of a silt fence is a required best management practice for erosion control, then, to preclude the need for a biological monitor, escape ramps, and concurrent backfilling, the guidelines for silt fence installation and maintenance in the [Trenching Project Guidelines](#) should be followed.



All migratory birds are protected against direct take under the federal [Migratory Bird Treaty Act](#) (16 U.S.C. Sections 703-712), and hawks, falcons, vultures, owls, songbirds, and other insect-eating birds are protected under New Mexico State Statutes (17-2-13 and 17-2-14 NMSA), unless permitted by the applicable regulatory agency. To minimize the likelihood of adverse impacts to migratory birds, nests, eggs, or nestlings, the Department recommends that ground disturbance and vegetation removal activities be conducted outside of the primary migratory bird breeding season of April 15-September 1. Breeding season may begin earlier for raptors or when working in low-elevation habitats such as deserts. If ground disturbing and clearing activities must be conducted during the breeding season, the area should be surveyed for active nest sites (with birds or eggs present in the nesting territory) and avoid disturbing active nests until young have fledged. For active nests, establish adequate buffer zones to minimize disturbance to nesting birds. Buffer distances should be at least 100 feet from songbird and raven nests; 0.25 miles from most raptor nests; and 0.5 miles for ferruginous hawk (*Buteo regalis*), golden eagle (*Aquila chrysaetos canadensis*), peregrine falcon (*Falco peregrinus*), and prairie falcon (*Falco mexicanus*) nests. Active nest sites in trees or shrubs that must be removed should be mitigated by qualified biologists or wildlife rehabilitators. Department biologists are available to consult on nest site mitigation and can facilitate contact with qualified personnel.

The list of [New Mexico SGCN](#) (see link, page 14, table 5) and the federal list of [Birds of Conservation Concern](#) should be reviewed to fully evaluate potential effects to migratory birds from your proposed project. Federal agencies are also required under Executive Order 13186 to implement standards and practices that lessen the amount of unintentional take attributable to agency actions. These conservation measures are strongly recommended to ensure persistence of migratory bird species whose populations are small and/or declining within New Mexico.

It appears that the project area is adjacent to Pueblo/Reservation lands. The Department has no jurisdiction or authority for the wildlife resources on Indian reservations or property. We would recommend that you contact the Pueblo/Reservation regarding general wildlife issues or information they may have.

Your project could affect important components of habitat for large mammals, including important and sensitive seasonal areas, stopover sites, or movement corridors for elk, mule deer, or pronghorn. Mitigation measures should be implemented as appropriate in these high use sites and movement areas that were identified based on data gathered and analyzed by the New Mexico Department of Game and Fish (Department) and partners. Management recommendations within these areas may include the following (as relevant to the proposed project).

- Restrictions on noise-generating activities during wintering and calving/fawning seasons. These seasons are November 15-April 30 for wintering and May 15-June 30 for calving fawning in northern New Mexico; specific timing differs for southern New Mexico. These activities include oil and gas well pad development and operations that expose wildlife to loud noises from drilling, compressors, and pumping stations within 400 feet of the source.
- Avoid new fence construction where possible and modify unavoidable fences along high use areas to make them wildlife friendly and facilitate large animal movement. Where possible, divide larger fenced sites into smaller fenced areas with movement corridors in between.
- Avoid siting facilities within important habitats such as critical seasonal ranges or parturition sites.
- To minimize surface disturbance, implement directional drilling and co-locate drill holes on a single pad in the least suitable areas for wildlife.
- Avoid construction or development activities during important times, like parturition (May 15 – June 30 in northern New Mexico).
- Where feasible, coordinate with the Department on collection of pre- and post-construction observational or GPS collar data to quantify responses of big game herds to project implementation.



Burrowing owl (*Athene cunicularia*) may occur within your project area. Burrowing owls are protected from take by the Migratory Bird Treaty Act and under New Mexico state statute. Before any ground disturbing activities occur, the Department recommends that a preliminary burrowing owl survey be conducted by a qualified biologist using the Department's [Burrowing Owl Survey Protocol](#). Should burrowing owls be documented in the project area, please contact the Department or USFWS for further recommendations regarding relocation or avoidance of impacts.

The proposed project occurs near an important bat area. This area may contain important bat roosting resources, such as caves or mines, that potentially could be affected by certain project activities. Follow the guidelines below to minimize disturbance to roosting bats.

- Avoid use of pesticides, firearms, open-flame torches, or heavy smoke-producing equipment, especially from April through September.
- If artificial lighting is needed, use only light sources powered by batteries, or cyalume glow/light sticks. Keep the site clean by picking up refuse or materials from project lighting or operations whenever they are shut down.
- For any surface disturbing activities, the project footprint (including a 350 foot buffer) should avoid potential roost sites such as caves or mines, especially from April through July. Tree clearing activities and prescribed burns should include a minimum 0.5 mile buffer from any such features.
- If caves, mines, bridges, or other man-made structure suitable as potential bat roosts are encountered within the project area, they should not be entered during any time of year, and no roosting or hibernating bats should be contacted or disturbed. Report any dead or injured bats to the Department, who can facilitate contacts with other appropriate personnel.

Your project area intersects an Important Plant Area (IPA) that contains one or more species of plants listed as threatened or endangered by the New Mexico Energy, Minerals and Natural Resources Department (EMNRD) under New Mexico Statutes Annotated (NMSA) 75-6-1 or by the USFWS under the federal ESA. Although IPAs have no legal designation, they have been identified as areas that support either a high diversity of sensitive plant species or contain the last remaining locations of New Mexico's most endangered plants. The Department recommends that you consult with EMNRD's [Endangered Plant Program Coordinator](#) regarding any state-listed plants and the USFWS's [Information for Planning and Consultation \(IPAC\)](#) system for any federally-listed plants and reaching out to the appropriate federal species lead(s) with the [New Mexico Ecological Services Office of USFWS](#). The Department does not have any authority to designate or advise on state- or federally-listed plants.

Prairie dog colonies may occur within the vicinity of your project area. Both black-tailed prairie dogs (*Cynomys ludovicianus*) and Gunnison's prairie dogs (*Cynomys gunnisoni*) are designated as New Mexico SGCN, and their colonies provide important habitat for other grassland wildlife. Wherever possible, occupied prairie dog colonies should be left undisturbed, and all project activities should be directed off the colony. Any burrows that are located on the project site should be surveyed by a qualified biologist to determine whether burrows are active or inactive and whether burrowing owls may be utilizing the site. Colonies within the range of the black-tailed prairie dog can be surveyed by a qualified biologist diurnally, year-round using binoculars. Colonies within the range of the Gunnison's prairie dog can be surveyed by a qualified biologist diurnally, using binoculars during the warmer months from April through October and by searching for fairly fresh scat and lack of cobwebs or debris at the mouths of burrows during the cold months (November through March). If ground-disturbing activities cannot be relocated off the prairie dog colony, or if project activities involve control of prairie dogs, the Department recommends live-trapping and relocation of prairie dogs. The Department can provide recommendations regarding suitability of potential translocation areas and procedures.



The proposed project occurs within or near a riparian area. Because riparian areas are important wildlife habitats, the project footprint should avoid removing any riparian vegetation or creating ground disturbance either directly within or affecting the riparian area, unless the project is intended to restore riparian habitat through non-native plant removal and replanting with native species. If your project involves removal of non-native riparian trees or planting of native riparian vegetation, please refer to the Department's habitat handbook guideline for [Restoration and Management of Native and Non-native Trees in Southwestern Riparian Ecosystems](#). The [New Mexico Riparian Habitat Map \(NMRipMap\)](#) may also provide useful information on local riparian habitat composition and structure.

Your proposed project occurs within an area where springs or other important natural water features occur. This may result in the presence of a high use area for wildlife relative to the surrounding landscape. To ensure continued function of these important wildlife habitats, your project should consider measures to avoid the following.

- Altering surface or groundwater flow or hydrology,
- Disturbance to soil that modifies geomorphic properties or facilitates invasion of non-native vegetation.
- Affecting local surface or groundwater quality.
- Creating disturbance to wildlife utilizing these water features. Disturbance to wildlife can be reduced through practices including clustering infrastructure and activity wherever possible, avoiding large visual obstructions around water features, and limiting nighttime project operations or activities.

Department biologists are available for site-specific consultation regarding measures to assist with management and conservation of these habitat resources.

Disclaimers regarding recommendations:

- The Department provides technical guidance to support the persistence of all protected species of native fish and wildlife, including game and nongame wildlife species. Species listed within this report include those that have been documented to occur within the project area, and others that may not have been documented but are projected to occur within the project vicinity.
- Recommendations are provided by the Department under the authority of § 17-1-5.1 New Mexico Statutes Annotated 1978, to provide "communication and consultation with federal and other state agencies, local governments and communities, private organizations and affected interests responsible for habitat, wilderness, recreation, water quality and environmental protection to ensure comprehensive conservation services for hunters, anglers and nonconsumptive wildlife users".
- The Department has no authority for management of plants or Important Plant Areas. The [New Mexico Endangered Plant Program](#), under the Energy, Minerals, and Natural Resources Department's Forestry Division, identifies and develops conservation measures necessary to ensure the survival of plant species within New Mexico. Plant status information is provided within this report as a courtesy to users. Recommendations provided within the ERT may not be sufficient to preclude impacts to rare or sensitive plants, unless conservation measures are identified in coordination with the Endangered Plant Program.
- Additional coordination and/or consultation may also be necessary under the federal ESA or National Environmental Policy Act (NEPA). Further site-specific mitigation recommendations may be proposed during ESA consultation and/or NEPA analyses or through coordination with affected federal agencies.