



PROJECT INFORMATION

Project Title: Walti Ciudad Private Property
Project Type: FOREST VEGETATION MANAGEMENT/RESTORATION
Latitude/Longitude (DMS): 35.223689 / -106.377479
County(s): SANDOVAL
Project Description: Thinning to reduce hazardous fuels.

REQUESTOR INFORMATION

Project Organization:
Contact Name: Marissa Goodwin
Email Address: marissa.goodwin@emnrd.nm.gov
Organization: New Mexico Energy Minerals and Natural Resources Department - State Forestry
Division
Address: 5105 Santa Fe Hills Blvd, Rio Rancho NM 87144
Phone: 5057095315

OVERALL STATUS

This report contains an initial list of recommendations regarding potential impacts to wildlife or wildlife habitats from the proposed project; see the Project Recommendations section below for further details. Your project proposal is being forwarded to a New Mexico Department of Game and Fish (Department) biologist for review to determine whether there are any additional recommendations regarding the proposed actions. A Department biologist will be in touch within 30 days if there are further recommendations regarding this project proposal.

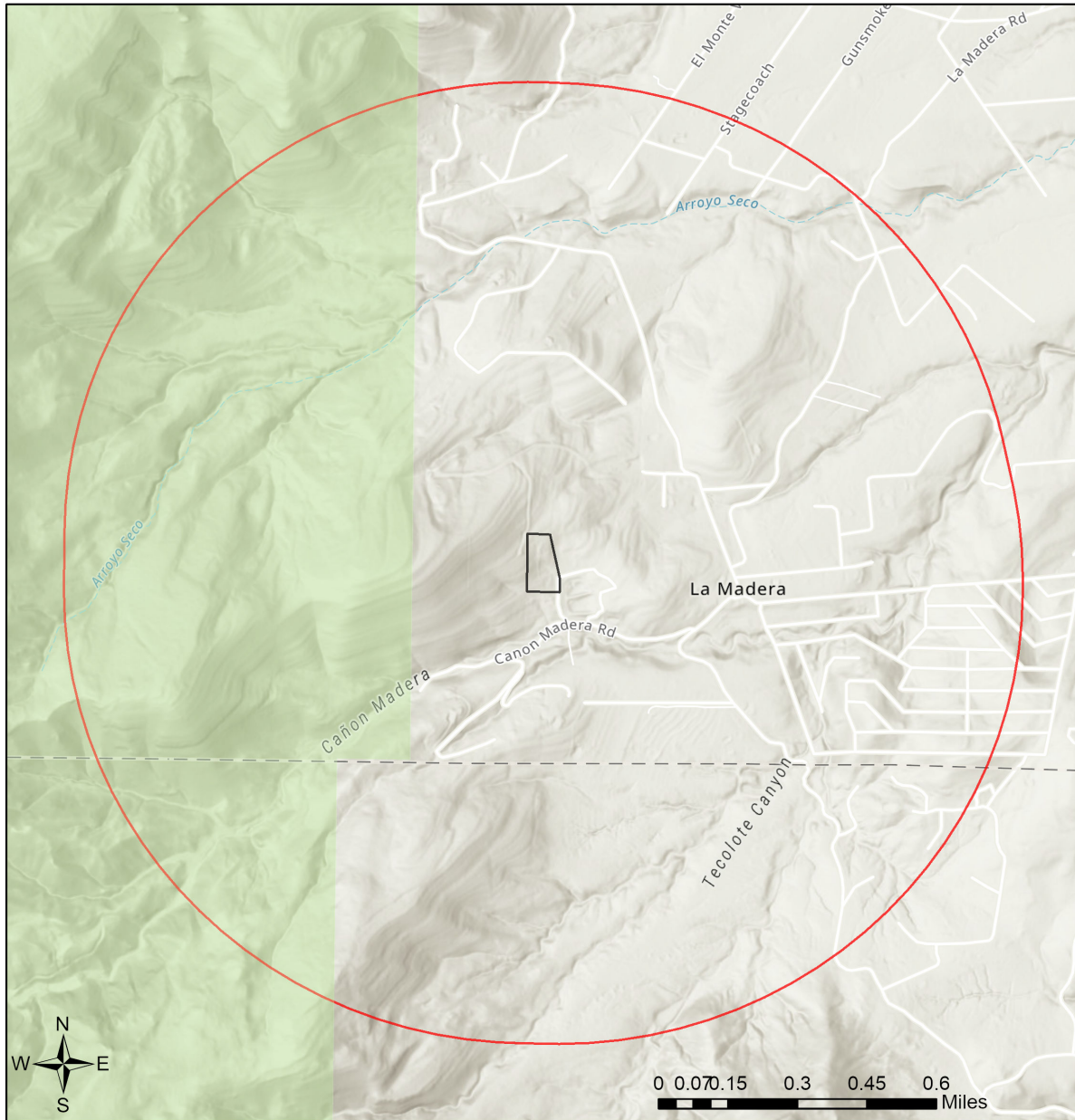


About this report:

- This environmental review is based on the project description and location that was entered. The report must be updated if the project type, area, or operational components are modified.
- This is a preliminary environmental screening assessment and report. It is not a substitute for the potential wildlife knowledge gained by having a biologist conduct a field survey of the project area. Federal status and plant data are provided as a courtesy to users. The review is also not intended to replace consultation required under the federal Endangered Species Act (ESA), including impact analyses for federal resources from the U.S. Fish and Wildlife Service (USFWS) using their [Information for Planning and Consultation tool](#).
- This report contains information on wildlife species protected under the ESA and the [Wildlife Conservation Act \(WCA\)](#), [Species of Greatest Conservation Need \(SGCN\)](#), and Species of Economic and Recreational Importance (SERI). Species listed under the ESA are protected from take at the federal level and under the WCA are protected from take at the state level. SGCN are identified in the [State Wildlife Action Plan \(SWAP\) for New Mexico](#); all of these species are considered to be of conservation concern but not all of them are protected from take at the state or federal level. The harvest of all SERI is regulated at the state level. The Department has no authority to designate critical habitat for species listed under the WCA; only the USFWS can designate critical habitat for species listed under the ESA.
- The New Mexico Environmental Review Tool (ERT) utilizes species observation locations and species habitat suitability models, both of which are subject to ongoing change and refinement. Inclusion or omission of a species within a report cannot guarantee species presence or absence within your project area. To determine occurrence of any species listed in this report, or other wildlife that may be present within your project area, onsite surveys conducted by a qualified biologist during appropriate, species-specific survey timelines may be necessary.
- The Department encourages use of the ERT to modify proposed projects for avoidance, minimization, or mitigation of wildlife impacts. However, the ERT is not intended to be used in a repeatedly iterative fashion to adjust project attributes until a previously determined recommendation is generated. The ERT serves to assess impacts once project details are developed. The [New Mexico Crucial Habitat Assessment Tool](#), the data layers from which are included in the ERT, is the appropriate system for advising early-stage project planning and design to avoid areas of anticipated wildlife concerns and associated regulatory requirements.



Walti Ciudad Private Property



- | | | | |
|---------------------------|------------------------------|------------------------------|---|
| Buffered Project Boundary | Department of Energy | State Land Office | U.S. Department of Agriculture |
| Project Boundary | NM Department of Game & Fish | State of New Mexico | U.S. Fish and Wildlife Service |
| Bureau of Land Management | NM State Forestry Division | Tribal Land | U.S. Forest Service |
| City Land | NM State Parks | U.S. Army Corps of Engineers | U.S. Natural Resources Conservation Service |
| County Land | National Park Service | U.S. Bureau of Reclamation | |
| Department of Defense | Private | | |

USGS, New Mexico Department of Game and Fish (NMDGF), Natural Heritage New Mexico (NHNM), and USDA Forest Service,

Compiled by Richard Norwood of NHNM over the period 2020 to 2021.

Sources: Esri, Airbus DS, USGS, NGA, NASA, CGIAR, N Robinson, NCEAS, NLS, OS, NMA, Geodastysreisen, Rijkswaterstaat, GSA, Geoland, FEMA, Intermap and the GIS user community



Special Status Animal Species Potentially within 1 Miles of Project Area

Common Name	Scientific Name	USFWS (ESA)	NMDGF (WCA)	NMDGF SGCN/SERI
Boreal Chorus Frog	Pseudacris maculata			SGCN
Northern Leopard Frog	Lithobates pipiens			SGCN
Aplomado Falcon	Falco femoralis		E	SGCN
Peregrine Falcon	Falco peregrinus		T	SGCN
Mountain Plover	Charadrius montanus			SGCN
Flammulated Owl	Otus flammeolus			SGCN
Western Burrowing Owl	Athene cunicularia hypugaea			SGCN
Mexican Spotted Owl	Strix occidentalis lucida	LT		SGCN
Common Nighthawk	Chordeiles minor			SGCN
Lewis's Woodpecker	Melanerpes lewis			SGCN
Williamson's Sapsucker	Sphyrapicus thyroideus			SGCN
Olive-Sided Flycatcher	Contopus cooperi			SGCN
Bank Swallow	Riparia riparia			SGCN
Pinyon Jay	Gymnorhinus cyanocephalus			SGCN
Clark's Nutcracker	Nucifraga columbiana			SGCN
Juniper Titmouse	Baeolophus ridgwayi			SGCN
Pygmy Nuthatch	Sitta pygmaea			SGCN
Western Bluebird	Sialia mexicana			SGCN
Mountain Bluebird	Sialia currucoides			SGCN
Loggerhead Shrike	Lanius ludovicianus			SGCN
Gray Vireo	Vireo vicinior		T	SGCN
Virginia's Warbler	Leiothlypis virginiae			SGCN
Black-Throated Gray Warbler	Setophaga nigrescens			SGCN
Grace's Warbler	Setophaga graciae			SGCN
Chestnut-Collared Longspur	Calcarius ornatus			SGCN
Cassin's Finch	Haemorhous cassinii			SGCN
Evening Grosbeak	Coccothraustes vespertinus			SGCN
Spotted Bat	Euderma maculatum		T	SGCN
Pale Townsend's Big-Eared Bat	Corynorhinus townsendii pallescens			SGCN
American Pika	Ochotona princeps			SGCN
Gunnison's Prairie Dog	Cynomys gunnisoni			SGCN
New Mexican Meadow Jumping Mouse	Zapus hudsonius luteus	LE	E	SGCN
Black Bear	Ursus americanus			SERI
Mountain Lion	Puma concolor			SERI
Elk	Cervus canadensis			SERI
Mule Deer	Odocoileus hemionus			SERI
Gray-Checkered Whiptail	Aspidoscelis tessellata		E	SGCN

Common Name hyperlink takes you to species account in bison-m.org; Scientific Name hyperlink takes you to information in NatureServe Explorer; ESA = Endangered Species Act, C = Candidate, LE = Listed Endangered, LT = Listed Threatened, XN = Non-



essential Experimental Population, for other ESA codes see this [website](#); WCA = Wildlife Conservation Act, E = Endangered, T = Threatened; SERI = Species of Economic and Recreational Importance; SGCN = Species of Greatest Conservation Need.

Project Recommendations

Your proposed project activities may require a custom review for assessment of potential effects to wildlife. See the "OVERALL STATUS" section above to determine the likelihood that your project will be reviewed further based on its location. A Department biologist will confirm whether any additional conservation measures are needed. You should expect to receive any additional project recommendations within 30 days of your project submission. If the "OVERALL STATUS" section indicates that no further consultation with the Department is required based on its location, then you will only receive additional project feedback from the Department if a biologist deems it necessary.

All migratory birds are protected against direct take under the federal [Migratory Bird Treaty Act](#) (16 U.S.C. Sections 703-712), and hawks, falcons, vultures, owls, songbirds, and other insect-eating birds are protected under New Mexico State Statutes (17-2-13 and 17-2-14 NMSA), unless permitted by the applicable regulatory agency. To minimize the likelihood of adverse impacts to migratory birds, nests, eggs, or nestlings, the Department recommends that ground disturbance and vegetation removal activities be conducted outside of the primary migratory bird breeding season of April 15-September 1. Breeding season may begin earlier for raptors or when working in low-elevation habitats such as deserts. If ground disturbing and clearing activities must be conducted during the breeding season, the area should be surveyed for active nest sites (with birds or eggs present in the nesting territory) and avoid disturbing active nests until young have fledged. For active nests, establish adequate buffer zones to minimize disturbance to nesting birds. Buffer distances should be at least 100 feet from songbird and raven nests; 0.25 miles from most raptor nests; and 0.5 miles for ferruginous hawk (*Buteo regalis*), golden eagle (*Aquila chrysaetos canadensis*), peregrine falcon (*Falco peregrinus*), and prairie falcon (*Falco mexicanus*) nests. Active nest sites in trees or shrubs that must be removed should be mitigated by qualified biologists or wildlife rehabilitators. Department biologists are available to consult on nest site mitigation and can facilitate contact with qualified personnel.

The list of [New Mexico SGCN](#) (see link, page 14, table 5) and the federal list of [Birds of Conservation Concern](#) should be reviewed to fully evaluate potential effects to migratory birds from your proposed project. Federal agencies are also required under Executive Order 13186 to implement standards and practices that lessen the amount of unintentional take attributable to agency actions. These conservation measures are strongly recommended to ensure persistence of migratory bird species whose populations are small and/or declining within New Mexico.

Burrowing owl (*Athene cunicularia*) may occur within your project area. Burrowing owls are protected from take by the Migratory Bird Treaty Act and under New Mexico state statute. Before any ground disturbing activities occur, the Department recommends that a preliminary burrowing owl survey be conducted by a qualified biologist using the Department's [burrowing owl survey protocol](#). Should burrowing owls be documented in the project area, please contact the Department or USFWS for further recommendations regarding relocation or avoidance of impacts.



The proposed project occurs near an important bat area. This area may contain important bat roosting resources, such as caves or mines, that potentially could be affected by certain project activities. Follow the guidelines below to minimize disturbance to roosting bats.

- Avoid use of pesticides, firearms, open-flame torches, or heavy smoke-producing equipment, especially from April through September.
- If artificial lighting is needed, use only light sources powered by batteries, or cyalume glow/light sticks. Keep the site clean by picking up refuse or materials from project lighting or operations whenever they are shut down.
- For any surface disturbing activities, the project footprint (including a 350 foot buffer) should avoid potential roost sites such as caves or mines, especially from April through July. Tree clearing activities and prescribed burns should include a minimum 0.5 mile buffer from any such features.
- If caves, mines, bridges, or other man-made structure suitable as potential bat roosts are encountered within the project area, they should not be entered during any time of year, and no roosting or hibernating bats should be contacted or disturbed. Report any dead or injured bats to the Department, who can facilitate contacts with other appropriate personnel.

Prairie dog colonies may occur within the vicinity of your project area. Both black-tailed prairie dogs (*Cynomys ludovicianus*) and Gunnison's prairie dogs (*Cynomys gunnisoni*) are designated as New Mexico SGCN, and their colonies provide important habitat for other grassland wildlife. Wherever possible, occupied prairie dog colonies should be left undisturbed, and all project activities should be directed off the colony. Any burrows that are located on the project site should be surveyed by a qualified biologist to determine whether burrows are active or inactive and whether burrowing owls may be utilizing the site. Colonies within the range of the black-tailed prairie dog can be surveyed by a qualified biologist diurnally, year-round using binoculars. Colonies within the range of the Gunnison's prairie dog can be surveyed by a qualified biologist diurnally, using binoculars during the warmer months from April through October and by searching for fairly fresh scat and lack of cobwebs or debris at the mouths of burrows during the cold months (November through March). If ground-disturbing activities cannot be relocated off the prairie dog colony, or if project activities involve control of prairie dogs, the Department recommends live-trapping and relocation of prairie dogs. The Department can provide recommendations regarding suitability of potential translocation areas and procedures.

Your proposed project occurs within an area where springs or other important natural water features occur. This may result in the presence of a high use area for wildlife relative to the surrounding landscape. To ensure continued function of these important wildlife habitats, your project should consider measures to avoid the following.

- Altering surface or groundwater flow or hydrology,
- Disturbance to soil that modifies geomorphic properties or facilitates invasion of non-native vegetation.
- Affecting local surface or groundwater quality.
- Creating disturbance to wildlife utilizing these water features. Disturbance to wildlife can be reduced through practices including clustering infrastructure and activity wherever possible, avoiding large visual obstructions around water features, and limiting nighttime project operations or activities.

Department biologists are available for site-specific consultation regarding measures to assist with management and conservation of these habitat resources.



Your project could affect important components of wildlife habitat, including fawning/calving or wintering areas for species such as deer and elk, or general high wildlife movement and activity areas for large mammals. Mitigation measures should focus on high use sites and movement areas based on collar data and expert knowledge of Department and land management agency personnel. Management recommendations within these areas may include the following.

- Restrictions on noise-generating activities during wintering and calving/fawning seasons, specific timing of which may vary throughout the state. These activities would include oil and gas well pad development and operations that expose wildlife to loud noises from drilling, compressors, and pumping stations within 400 feet of the source.
- Modifying fences along high use areas to make them wildlife friendly and facilitate large animal movement.

Disclaimers regarding recommendations:

- The Department provides technical guidance to support the persistence of all protected species of native fish and wildlife, including game and nongame wildlife species. Species listed within this report include those that have been documented to occur within the project area, and others that may not have been documented but are projected to occur within the project vicinity.
- Recommendations are provided by the Department under the authority of § 17-1-5.1 New Mexico Statutes Annotated 1978, to provide "communication and consultation with federal and other state agencies, local governments and communities, private organizations and affected interests responsible for habitat, wilderness, recreation, water quality and environmental protection to ensure comprehensive conservation services for hunters, anglers and nonconsumptive wildlife users".
- The Department has no authority for management of plants or Important Plant Areas. The [New Mexico Endangered Plant Program](#), under the Energy, Minerals, and Natural Resources Department's Forestry Division, identifies and develops conservation measures necessary to ensure the survival of plant species within New Mexico. Plant status information is provided within this report as a courtesy to users. Recommendations provided within the ERT may not be sufficient to preclude impacts to rare or sensitive plants, unless conservation measures are identified in coordination with the Endangered Plant Program.
- Additional coordination and/or consultation may also be necessary under the federal ESA or National Environmental Policy Act (NEPA). Further site-specific mitigation recommendations may be proposed during ESA consultation and/or NEPA analyses or through coordination with affected federal agencies.