



---

## PROJECT INFORMATION

---

**Project Title:** Carson Burnham Additional Waterline  
**Project Type:** (NO PROJECT REVIEW) SPECIES LIST ONLY  
**Latitude/Longitude (DMS):** 36.392325 / -107.875052  
**County(s):** SAN JUAN  
**Project Description:** The Cutter Lateral Phase 6F Waterline Project would be extended to include an additional waterline that would better intertie with the existing water system where transmission and distribution bottlenecks occur and would increase the water system capacity for future water demands. The additional waterline would help to provide water to about 424 homes in the Huerfano and Tiis Tsoh Sikaad (Burnham) chapters that rely on the existing Navajo Tribal Utility Authority (NTUA) Carson-Burnham community water system. The Cutter Lateral Phase 6F that includes 6.6 miles of waterlines and new tank site would be expanded to include 2.57 miles of waterline added to the DZ intertie alignment. This waterline would become a part of the NTUA Carson-Burnham community water system, distributing water to the 424 homes via the previously evaluated waterlines and water storage tank. The total area of disturbance would be approximately 31 acres in addition to the 82.3 acres for the original intertie lines and associated storage tanks and supply line for the Cutter Lateral 6F waterline project.

---

## REQUESTOR INFORMATION

---

**Project Organization:**  
**Contact Name:** Stephanie Lee  
**Email Address:** stephanie.lee@ddc4c.com  
**Organization:** BRIC LLC  
**Address:** 8901 Adams Street NE, Suite B, Albuquerque, Albuquerque NM 87113  
**Phone:** 5055634702

---

## OVERALL STATUS

---

The information contained within this report comprises the recommendations of the New Mexico Department of Game and Fish (Department) for management and mitigation of proposed project impacts to wildlife and habitat resources; see the Project Recommendations section below for further details. No further consultation with the Department is required based on the project's location and, with implementation of mitigation measures described in the Project Recommendations section below, no adverse effects to wildlife or important habitats are anticipated. However, a Department biologist may be in touch within 30 days if they determine that further review is required.



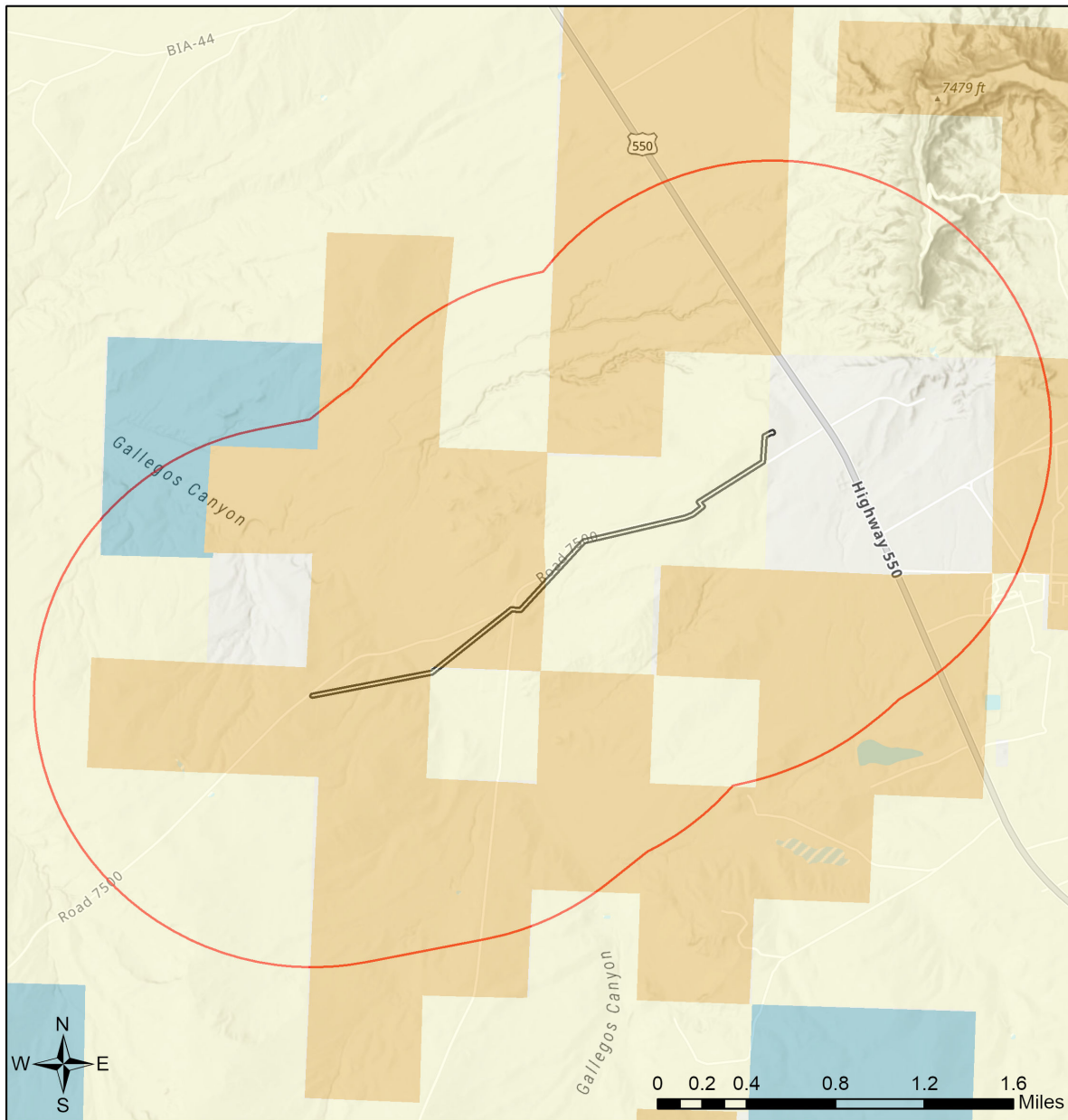
---

**About this report:**

- This environmental review is based on the project description and location that was entered. The report must be updated if the project type, area, or operational components are modified.
- This is a preliminary environmental screening assessment and report. It is not a substitute for the potential wildlife knowledge gained by having a biologist conduct a field survey of the project area. Federal status and plant data are provided as a courtesy to users. The review is also not intended to replace consultation required under the federal Endangered Species Act (ESA), including impact analyses for federal resources from the U.S. Fish and Wildlife Service (USFWS) using their [Information for Planning and Consultation tool](#).
- The New Mexico Environmental Review Tool (ERT) utilizes species observation locations and species habitat suitability models, both of which are subject to ongoing change and refinement. Inclusion or omission of a species within a report cannot guarantee species presence or absence within your project area. To determine occurrence of any species listed in this report, or other wildlife that may be present within your project area, onsite surveys conducted by a qualified biologist during appropriate, species-specific survey timelines may be necessary.
- The Department encourages use of the ERT to modify proposed projects for avoidance, minimization, or mitigation of wildlife impacts. However, the ERT is not intended to be used in a repeatedly iterative fashion to adjust project attributes until a previously determined recommendation is generated. The ERT serves to assess impacts once project details are developed. The [New Mexico Crucial Habitat Assessment Tool](#) is the appropriate system for advising early-stage project planning and design to avoid areas of anticipated wildlife concerns and associated regulatory requirements.



## Carson Burnham Additional Waterline



- |                           |                              |                              |   |
|---------------------------|------------------------------|------------------------------|---|
| Buffered Project Boundary | Department of Energy         | State Land Office            | U.S. Department of Agriculture              |
| Project Boundary          | NM Department of Game & Fish | State of New Mexico          | U.S. Fish and Wildlife Service              |
| Bureau of Land Management | NM State Forestry Division   | Tribal Land                  | U.S. Forest Service                         |
| City Land                 | NM State Parks               | U.S. Army Corps of Engineers | U.S. Natural Resources Conservation Service |
| County Land               | National Park Service        | U.S. Bureau of Reclamation   |   |
| Department of Defense     | Private                      |                              |   |

USGS, New Mexico Department of Game and Fish (NMDGF), Natural Heritage New Mexico (NHNM), and USDA Forest Service,

Compiled by Richard Norwood of NHNM over the period 2020 to 2021.

Sources: Esri, Airbus DS, USGS, NGA, NASA, CGIAR, N Robinson, NCEAS, NLS, OS, NMA, Geodatasyreisen, Rijkswaterstaat, GSA, Geoland, FEMA, Intermap and the GIS user community



**Special Status Animal Species Potentially within 2000 Meters of Project Area**

Common Name	Scientific Name	USFWS (ESA)	NMDGF (WCA)	NMDGF SGCN/SERI
<a href="#">Western Toad</a>	<a href="#">Anaxyrus boreas</a>	PS	E	SGCN
<a href="#">Northern Leopard Frog</a>	<a href="#">Lithobates pipiens</a>			SGCN
<a href="#">Eared Grebe</a>	<a href="#">Podiceps nigricollis</a>			SGCN
<a href="#">Clark's Grebe</a>	<a href="#">Aechmophorus clarkii</a>			SGCN
<a href="#">American Bittern</a>	<a href="#">Botaurus lentiginosus</a>			SGCN
<a href="#">Peregrine Falcon</a>	<a href="#">Falco peregrinus</a>		T	SGCN
<a href="#">Mountain Plover</a>	<a href="#">Charadrius montanus</a>			SGCN
<a href="#">Flammulated Owl</a>	<a href="#">Otus flammeolus</a>			SGCN
<a href="#">Western Burrowing Owl</a>	<a href="#">Athene cunicularia hypugaea</a>			SGCN
<a href="#">Common Nighthawk</a>	<a href="#">Chordeiles minor</a>			SGCN
<a href="#">Lewis's Woodpecker</a>	<a href="#">Melanerpes lewis</a>			SGCN
<a href="#">Williamson's Sapsucker</a>	<a href="#">Sphyrapicus thyroideus</a>			SGCN
<a href="#">Olive-Sided Flycatcher</a>	<a href="#">Contopus cooperi</a>			SGCN
<a href="#">Bank Swallow</a>	<a href="#">Riparia riparia</a>			SGCN
<a href="#">Pinyon Jay</a>	<a href="#">Gymnorhinus cyanocephalus</a>			SGCN
<a href="#">Clark's Nutcracker</a>	<a href="#">Nucifraga columbiana</a>			SGCN
<a href="#">Pygmy Nuthatch</a>	<a href="#">Sitta pygmaea</a>			SGCN
<a href="#">Western Bluebird</a>	<a href="#">Sialia mexicana</a>			SGCN
<a href="#">Mountain Bluebird</a>	<a href="#">Sialia currucoides</a>			SGCN
<a href="#">Loggerhead Shrike</a>	<a href="#">Lanius ludovicianus</a>			SGCN
<a href="#">Gray Vireo</a>	<a href="#">Vireo vicinior</a>		T	SGCN
<a href="#">Virginia's Warbler</a>	<a href="#">Leiothlypis virginiae</a>			SGCN
<a href="#">Grace's Warbler</a>	<a href="#">Setophaga graciae</a>			SGCN
<a href="#">Vesper Sparrow</a>	<a href="#">Pooecetes gramineus</a>			SGCN
<a href="#">Cassin's Finch</a>	<a href="#">Haemorhous cassinii</a>			SGCN
<a href="#">Evening Grosbeak</a>	<a href="#">Coccothraustes vespertinus</a>			SGCN
<a href="#">Spotted Bat</a>	<a href="#">Euderma maculatum</a>		T	SGCN
<a href="#">Pale Townsend's Big-Eared Bat</a>	<a href="#">Corynorhinus townsendii pallescens</a>			SGCN
<a href="#">Gunnison's Prairie Dog</a>	<a href="#">Cynomys gunnisoni</a>			SGCN
<a href="#">Mountain Lion</a>	<a href="#">Puma concolor</a>			SERI
<a href="#">Elk</a>	<a href="#">Cervus canadensis</a>			SERI

ESA = Endangered Species Act, WCA = Wildlife Conservation Act, SGCN = Species of Greatest Conservation Need, SERI = Species of Economic and Recreational Importance, C = Candidate, E = Endangered, LE = Listed Endangered, LT = Listed Threatened, T = Threatened, XN = Non-essential Experimental Population, for other ESA codes see this website: <https://nhnm.unm.edu/node/1378928>.



---

## Project Recommendations

This report includes a preliminary species list that may be used during early stages of project or conservation planning. Even if this report indicates that your proposed project location would require a custom review from a biologist, **no review will be returned** until additional project details are provided. **To obtain a project review**, please submit additional details regarding the **type** of project, project **objectives**, anticipated project **duration**, **timing** of project construction, the composition and dimensions/quantities of **materials** that will be utilized for project implementation, any **equipment** that will be used, anticipated **ground disturbance** that will occur, wildlife surveys or observations that have occurred on or near the project site, and **any other relevant details** regarding potential effects of project activities on wildlife or wildlife habitat. **Photographs** of the project site are especially useful.

Although this project report may include management recommendations based on the project location, additional conservation measures may be needed. The Department can not fully assess potential effects and associated management recommendations until a **project type and description** have been submitted and an appropriate **impact buffer** for that project type has been applied. Also, the species list within this report represents an estimation of special status species that could be present at the site of a small-scale project. Species lists for projects that occur across **broader geographic scales** (e.g., one or more counties, multiple habitat types) are more appropriately obtained from the **Department's Biota Information System of New Mexico (BISON-M) database**. Species lists generated by the ERT may contain modeled species distributions in order to predict species occurrences within areas that lack previous wildlife inventories or surveys. This list can be refined using occurrence-based information within BISON-M regarding wildlife-habitat relationships and biological needs for species that might be present within the project footprint.

Burrowing owl (*Athene cunicularia*) may occur within your project area. Before any ground disturbing activities occur, the Department recommends that a preliminary burrowing owl survey be conducted by a qualified biologist using the Department's [burrowing owl survey protocol](#). Should burrowing owls be documented in the project area, please contact the Department or USFWS for further recommendations regarding relocation or avoidance of impacts.

Your project area intersects an Important Plant Area (IPA) that contains one or more species of plants listed as threatened or endangered by the New Mexico Energy, Minerals and Natural Resources Department (EMNRD) under New Mexico Statutes Annotated (NMSA) 75-6-1 or by the U.S. Fish and Wildlife Service (USFWS) under the federal Endangered Species Act. Although IPAs have no legal designation, they have been identified as areas that support either a high diversity of sensitive plant species or contain the last remaining locations of New Mexico's most endangered plants. The Department recommends that you consult with EMNRD's [Endangered Plant Program Coordinator](#) regarding any state-listed plants and the U.S. Fish and Wildlife Service's [Information for Planning and Consultation \(IPAC\)](#) system for any federally-listed plants and reaching out to the appropriate federal species lead(s) with the [New Mexico Ecological Services Office of U.S. Fish and Wildlife Service](#). The Department does not have any authority to designate or advise on state- or federally-listed plants.



Prairie dog colonies may occur within the vicinity of your project area. Both black-tailed prairie dogs (*Cynomys ludovicianus*) and Gunnison's prairie dogs (*Cynomys gunnisoni*) are designated as New Mexico Species of Greatest Conservation Need, and their colonies provide important habitat for other grassland wildlife. Wherever possible, occupied prairie dog colonies should be left undisturbed, and all project activities should be directed off the colony. Any burrows that are located on the project site should be surveyed by a qualified biologist to determine whether burrows are active or inactive and whether burrowing owls may be utilizing the site. Colonies within the range of the black-tailed prairie dog can be surveyed by a qualified biologist diurnally, year-round using binoculars. Colonies within the range of the Gunnison's prairie dog can be surveyed by a qualified biologist diurnally, using binoculars during the warmer months from April through October and by searching for fairly fresh scat and lack of cobwebs or debris at the mouths of burrows during the cold months (November through March). If ground-disturbing activities cannot be relocated off the prairie dog colony, or if project activities involve control of prairie dogs, the Department recommends live-trapping and relocation of prairie dogs. The Department can provide recommendations regarding suitability of potential translocation areas and procedures.

**Disclaimers regarding recommendations:**

- The Department provides technical guidance to support the persistence of all protected species of native fish and wildlife, including game and nongame wildlife species. Species listed within this report include those that have been documented to occur within the project area, and others that may not have been documented but are projected to occur within the project vicinity.
- Recommendations are provided by the Department under the authority of § 17-1-5.1 New Mexico Statutes Annotated 1978, to provide "communication and consultation with federal and other state agencies, local governments and communities, private organizations and affected interests responsible for habitat, wilderness, recreation, water quality and environmental protection to ensure comprehensive conservation services for hunters, anglers and nonconsumptive wildlife users".
- The Department has no authority for management of plants or Important Plant Areas. The [New Mexico Endangered Plant Program](#), under the Energy, Minerals, and Natural Resources Department's Forestry Division, identifies and develops conservation measures necessary to ensure the survival of plant species within New Mexico. Plant status information is provided within this report as a courtesy to users. Recommendations provided within the ERT may not be sufficient to preclude impacts to rare or sensitive plants, unless conservation measures are identified in coordination with the Endangered Plant Program.
- Additional coordination and/or consultation may also be necessary under the federal ESA or National Environmental Policy Act (NEPA). Further site-specific mitigation recommendations may be proposed during ESA consultation and/or NEPA analyses or through coordination with affected federal agencies.