



---

## PROJECT INFORMATION

---

**Project Title:** Ft. Stanton Fuels Reduction Project  
**Project Type:** FIRE MANAGEMENT, FIRE MANAGEMENT PLANNING  
**Latitude/Longitude (DMS):** 33.494271 / -105.528013  
**County(s):** LINCOLN  
**Project Description:** NM Forestry Division is assisting the Fort Stanton staff (DCA) in writing a wildfire fuels reduction and management plan. The plan will cover the 240 acres of the Fort, including several historic buildings.

## REQUESTOR INFORMATION

---

**Project Organization:** NM STATE AGENCY  
**Contact Name:** Mary Lavin  
**Email Address:** mary.lavin@emnrd.nm.gov  
**Organization:** NM Forestry Division  
**Address:** PO Box 591, 118 Smokey Bear Blvd., Capitan NM 88316  
**Phone:** (575) 246-7825

## OVERALL STATUS

---

This report contains an initial list of recommendations regarding potential impacts to wildlife or wildlife habitats from the proposed project; see the Project Recommendations section below for further details. Your project proposal is being forwarded to a New Mexico Department of Game and Fish (Department) biologist for review to determine whether there are any additional recommendations regarding the proposed actions. A Department biologist will be in touch within 30 days if there are further recommendations regarding this project proposal.

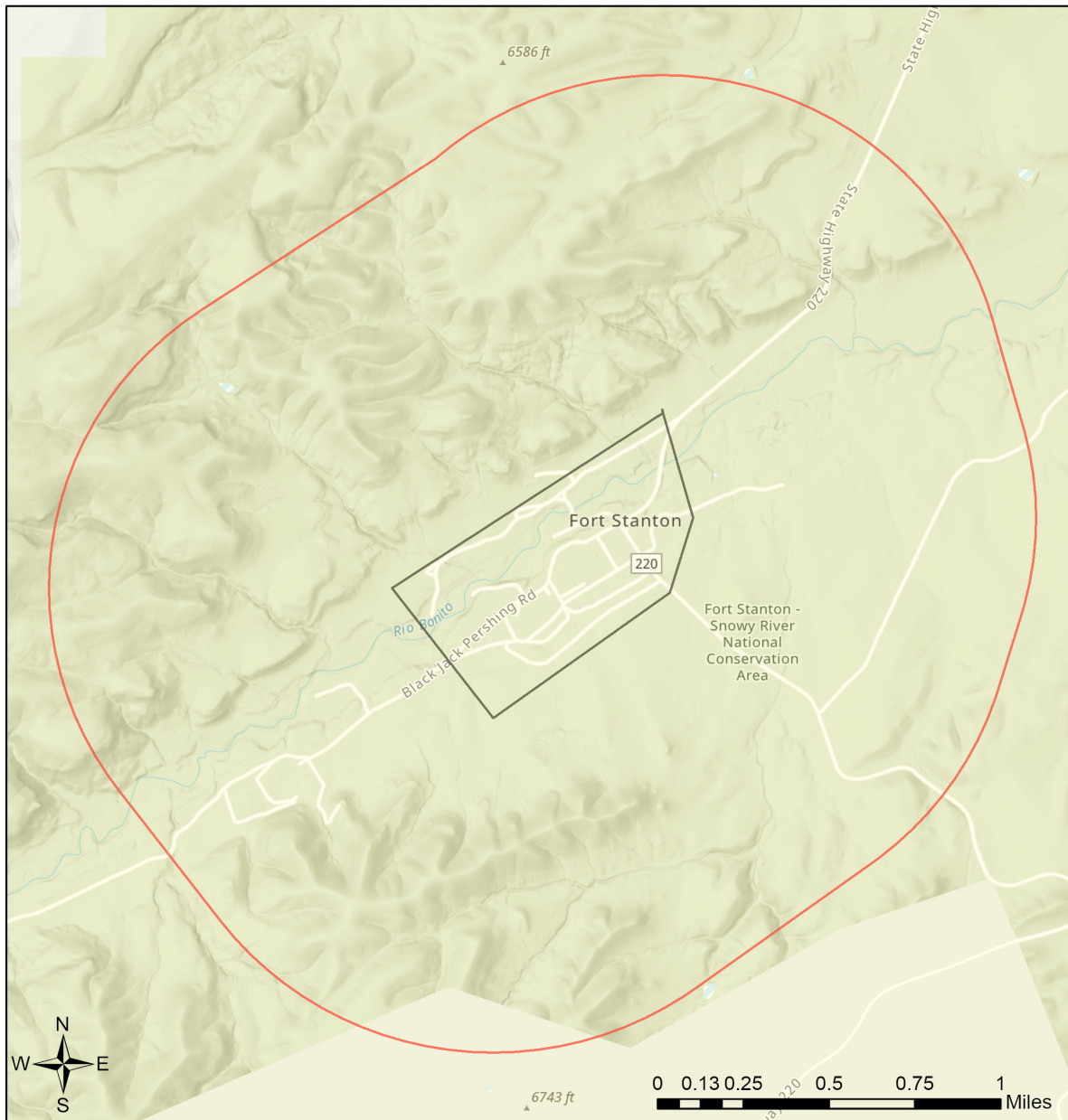
### About this report:

- This environmental review is based on the project description and location that was entered. The report must be updated if the project type, area, or operational components are modified.
- This is a preliminary environmental screening assessment and report. It is not a substitute for the potential wildlife knowledge gained by having a biologist conduct a field survey of the project area. Federal status and plant data are provided as a courtesy to users. The review is also not intended to replace consultation required under the federal Endangered Species Act (ESA), including impact analyses for federal resources from the U.S. Fish and Wildlife Service (USFWS) using their [Information for Planning and Consultation tool](#).
- The New Mexico Environmental Review Tool (ERT) utilizes species observation locations and species habitat suitability models, both of which are subject to ongoing change and refinement. Inclusion or omission of a species within a report cannot guarantee species presence or absence within your project area. To determine occurrence of any species listed in this report, or other wildlife that may be present within your project area, onsite surveys conducted by a qualified biologist during appropriate, species-specific survey timelines may be necessary.
- The Department encourages use of the ERT to modify proposed projects for avoidance, minimization, or mitigation of wildlife impacts. However, the ERT is not intended to be used in a repeatedly iterative fashion to adjust project attributes until a previously determined recommendation is generated. The ERT serves to assess impacts once project details are developed. The [New Mexico Crucial Habitat Assessment Tool](#) is the appropriate system for advising early-stage project planning and design to avoid areas of anticipated wildlife concerns and associated regulatory requirements.





## Ft. Stanton Fuels Reduction Project



- |                           |                              |                              |   |
|---------------------------|------------------------------|------------------------------|---|
| Buffered Project Boundary | Department of Energy         | State Land Office            | U.S. Department of Agriculture              |
| Project Boundary          | NM Department of Game & Fish | State of New Mexico          | U.S. Fish and Wildlife Service              |
| Bureau of Land Management | NM State Forestry Division   | Tribal Land                  | U.S. Forest Service                         |
| City Land                 | NM State Parks               | U.S. Army Corps of Engineers | U.S. Natural Resources Conservation Service |
| County Land               | National Park Service        | U.S. Bureau of Reclamation   |   |
| Department of Defense     | Private                      |                              |   |

USGS, New Mexico Department of Game and Fish (NMDGF), Natural Heritage New Mexico (NHNM), and USDA Forest Service,

Compiled by Richard Norwood of NHNM over the period 2020 to 2021.

Sources: Esri, Airbus DS, USGS, NGA, NASA, CGIAR, N Robinson, NCEAS, NLS, OS, NMA, Geodastysreisen, Rijkswaterstaat, GSA, Geoland, FEMA, Intermap and the GIS user community



**Special Status Animal Species Potentially within 1 Miles of Project Area**

Common Name	Scientific Name	USFWS (ESA)	NMDGF (WCA)	NMDGF SGCN/SERI
<a href="#">Northern Leopard Frog</a>	<a href="#">Lithobates pipiens</a>			SGCN
<a href="#">Eared Grebe</a>	<a href="#">Podiceps nigricollis</a>			SGCN
<a href="#">Clark's Grebe</a>	<a href="#">Aechmophorus clarkii</a>			SGCN
<a href="#">Aplomado Falcon</a>	<a href="#">Falco femoralis</a>		E	SGCN
<a href="#">Peregrine Falcon</a>	<a href="#">Falco peregrinus</a>		T	SGCN
<a href="#">Snowy Plover</a>	<a href="#">Charadrius nivosus</a>			SGCN
<a href="#">Mountain Plover</a>	<a href="#">Charadrius montanus</a>			SGCN
<a href="#">Western Burrowing Owl</a>	<a href="#">Athene cunicularia hypugaea</a>			SGCN
<a href="#">Mexican Spotted Owl</a>	<a href="#">Strix occidentalis lucida</a>	LT		SGCN
<a href="#">Common Nighthawk</a>	<a href="#">Chordeiles minor</a>			SGCN
<a href="#">Lewis's Woodpecker</a>	<a href="#">Melanerpes lewis</a>			SGCN
<a href="#">Williamson's Sapsucker</a>	<a href="#">Sphyrapicus thyroideus</a>			SGCN
<a href="#">Bank Swallow</a>	<a href="#">Riparia riparia</a>			SGCN
<a href="#">Pinyon Jay</a>	<a href="#">Gymnorhinus cyanocephalus</a>			SGCN
<a href="#">Juniper Titmouse</a>	<a href="#">Baeolophus ridgwayi</a>			SGCN
<a href="#">Pygmy Nuthatch</a>	<a href="#">Sitta pygmaea</a>			SGCN
<a href="#">Western Bluebird</a>	<a href="#">Sialia mexicana</a>			SGCN
<a href="#">Mountain Bluebird</a>	<a href="#">Sialia currucoides</a>			SGCN
<a href="#">Loggerhead Shrike</a>	<a href="#">Lanius ludovicianus</a>			SGCN
<a href="#">Gray Vireo</a>	<a href="#">Vireo vicinior</a>		T	SGCN
<a href="#">Virginia's Warbler</a>	<a href="#">Oreothlypis virginiae</a>			SGCN
<a href="#">Black-Throated Gray Warbler</a>	<a href="#">Setophaga nigrescens</a>			SGCN
<a href="#">Grace's Warbler</a>	<a href="#">Setophaga graciae</a>			SGCN
<a href="#">Vesper Sparrow</a>	<a href="#">Pooecetes gramineus</a>			SGCN
<a href="#">Chestnut-collared Longspur</a>	<a href="#">Calcarius ornatus</a>			SGCN
<a href="#">Cassin's Finch</a>	<a href="#">Haemorhous cassinii</a>			SGCN
<a href="#">Evening Grosbeak</a>	<a href="#">Coccothraustes vespertinus</a>			SGCN
<a href="#">Rainbow Trout</a>	<a href="#">Oncorhynchus mykiss</a>			SERI
<a href="#">Spotted Bat</a>	<a href="#">Euderma maculatum</a>		T	SGCN
<a href="#">Pale Townsend's Big-Eared Bat</a>	<a href="#">Corynorhinus townsendii pallescens</a>			SGCN
<a href="#">Black-tailed Prairie Dog</a>	<a href="#">Cynomys ludovicianus</a>			SGCN
<a href="#">Common Checkered Whiptail</a>	<a href="#">Aspidoscelis tessellata</a>		E	SGCN
<a href="#">Western Ribbon Snake</a>	<a href="#">Thamnophis proximus</a>		T	SGCN
<a href="#">Rock Rattlesnake</a>	<a href="#">Crotalus lepidus</a>			SGCN
<a href="#">Desert Massasauga</a>	<a href="#">Sistrurus catenatus edwardsii</a>			SGCN

ESA = Endangered Species Act, WCA = Wildlife Conservation Act, SGCN = Species of Greatest Conservation Need, SERI = Species of Economic and Recreational Importance, C = Candidate, E = Endangered, T = Threatened



### Special Status Plant Species Potentially within 1 Miles of Project Area

Common Name	Scientific Name	USFWS (ESA)	NMAC	NMRPCS
<a href="#">Dwarf Milkweed</a>	<a href="#">Asclepias uncialis</a>			SS
<a href="#">Kuenzler's Cactus</a>	<a href="#">Echinocereus fendleri var. kuenzleri</a>	LE	E	SS

NMAC = New Mexico Administrative Code, NMRPCS = [New Mexico Rare Plant Conservation Strategy](#), SS = NM Rare Plant Conservation Strategy Species, E = Endangered

### Project Recommendations

Your proposed project activities may require a custom review for assessment of potential effects to wildlife. See the "OVERALL STATUS" section above to determine the likelihood that your project will be reviewed further based on its location. A Department biologist will confirm whether any additional conservation measures are needed. You should expect to receive any additional project recommendations within 30 days of your project submission. If the "OVERALL STATUS" section indicates that no further consultation with the Department is required based on its location, then you will only receive additional project feedback from the Department if a biologist deems it necessary.

Burrowing owl (*Athene cunicularia*) may occur within your project area. Before any ground disturbing activities occur, the Department recommends that a preliminary burrowing owl survey be conducted by a qualified biologist using the Department's [burrowing owl survey protocol](#). Should burrowing owls be documented in the project area, please contact the Department or USFWS for further recommendations regarding relocation or avoidance of impacts.

The proposed project occurs near an important bat area. This area may contain important bat roosting resources, such as caves or mines, that potentially could be affected by certain project activities. Follow the guidelines below to minimize disturbance to roosting bats.

- Avoid use of pesticides, firearms, open-flame torches, or heavy smoke-producing equipment, especially from April through September.
- If artificial lighting is needed, use only light sources powered by batteries, or cyalume glow/light sticks. Keep the site clean by picking up refuse or materials from project lighting or operations whenever they are shut down.
- For any surface disturbing activities, the project footprint (including a 350 foot buffer) should avoid potential roost sites such as caves or mines, especially from April through July. Tree clearing activities and prescribed burns should include a minimum 0.5 mile buffer from any such features.
- If caves, mines, bridges, or other man-made structure suitable as potential bat roosts are encountered within the project area, they should not be entered during any time of year, and no roosting or hibernating bats should be contacted or disturbed. Report any dead or injured bats to the New Mexico Department of Game and Fish, who can facilitate contacts with other appropriate personnel.



Prairie dog colonies may occur within the vicinity of your project area. Both black-tailed prairie dogs (*Cynomys ludovicianus*) and Gunnison's prairie dogs (*Cynomys gunnisoni*) are designated as New Mexico Species of Greatest Conservation Need, and their colonies provide important habitat for other grassland wildlife. Wherever possible, occupied prairie dog colonies should be left undisturbed, and all project activities should be directed off the colony. Any burrows that are located on the project site should be surveyed by a qualified biologist to determine whether burrows are active or inactive and whether burrowing owls may be utilizing the site. Colonies within the range of the black-tailed prairie dog can be surveyed by a qualified biologist diurnally, year-round using binoculars. Colonies within the range of the Gunnison's prairie dog can be surveyed by a qualified biologist diurnally, using binoculars during the warmer months from April through October and by searching for fairly fresh scat and lack of cobwebs or debris at the mouths of burrows during the cold months (November through March). If ground-disturbing activities cannot be relocated off the prairie dog colony, or if project activities involve control of prairie dogs, the Department recommends live-trapping and relocation of prairie dogs. The Department can provide recommendations regarding suitability of potential translocation areas and procedures.

The proposed project occurs within or near a riparian area. Because riparian areas are important wildlife habitats, the project footprint should avoid removing any riparian vegetation or creating ground disturbance either directly within or affecting the riparian area, unless the project is intended to restore riparian habitat through non-native plant removal and replanting with native species. If your project involves removal of non-native riparian trees or planting of native riparian vegetation, please refer to the Department's habitat handbook guideline for [Restoration and Management of Native and Non-native Trees in Southwestern Riparian Ecosystems](#).

Your project could affect important components of wildlife habitat, including fawning/calving or wintering areas for species such as deer and elk, or general high wildlife movement and activity areas for large mammals. Mitigation measures should focus on high use sites and movement areas based on collar data and expert knowledge of Department of Game and Fish and land management agency personnel. Management recommendations within these areas may include the following.

- Restrictions on noise-generating activities during wintering and calving/fawning seasons, specific timing of which may vary throughout the state. These activities would include oil and gas well pad development and operations that expose wildlife to loud noises from drilling, compressors, and pumping stations within 400 feet of the source.
- Modifying fences along high use areas to make them wildlife friendly and facilitate large animal movement.



---

**Disclaimers regarding recommendations:**

- The Department provides technical guidance to support the persistence of all protected species of native fish and wildlife, including game and nongame wildlife species. Species listed within this report include those that have been documented to occur within the project area, and others that may not have been documented but are projected to occur within the project vicinity.
- Recommendations are provided by the Department under the authority of § 17-1-5.1 New Mexico Statutes Annotated 1978, to provide "communication and consultation with federal and other state agencies, local governments and communities, private organizations and affected interests responsible for habitat, wilderness, recreation, water quality and environmental protection to ensure comprehensive conservation services for hunters, anglers and nonconsumptive wildlife users".
- The Department has no authority for management of plants or Important Plant Areas. The [New Mexico Endangered Plant Program](#), under the Energy, Minerals, and Natural Resources Department's Forestry Division, identifies and develops conservation measures necessary to ensure the survival of plant species within New Mexico. Plant status information is provided within this report as a courtesy to users. Recommendations provided within the ERT may not be sufficient to preclude impacts to rare or sensitive plants, unless conservation measures are identified in coordination with the Endangered Plant Program.
- Additional coordination may also be necessary under the federal ESA or National Environmental Policy Act (NEPA). Further site-specific recommendations may be proposed during ESA and/or NEPA analyses, or through coordination with affected federal agencies.