



---

## PROJECT INFORMATION

---

**Project Title:** NM 264 MP 0-16  
**Project Type:** TRANSPORTATION, ROADS AND BRIDGES, ROADS AND BRIDGES-MAINTENANCE/MINOR RETROFIT  
**Latitude/Longitude (DMS):** 35.630423 / -108.915082  
**County(s):** MCKINLEY  
**Project Description:** The New Mexico Department of Transportation (NMDOT) is evaluating potential improvements to New Mexico (NM) 264 from the New Mexico/Arizona state line to Yah-Ta-Hey, the trumpet interchange with US 491 (milepost 0 to milepost 16). The proposed project has been assigned NMDOT Control Number (CN) 6101220. The purpose of the project is to improve the condition and life expectancy of the roadway, improve drainage conditions, and improve overall safety. The project is needed because the existing pavement has deteriorated, creating a rough driving surface for vehicles. Additionally, existing drainage structures are in poor condition due to scour and/or sediment fill and the current barrier system (guardrail) does not comply with the American Association of Highway and Transportation Officials' (AASHTO) Manual for Assessing Safety Hardware.

---

## REQUESTOR INFORMATION

---

**Project Organization:** NM DEPARTMENT OF TRANSPORTATION  
**Contact Name:** Maria Altemus  
**Email Address:** maria.altemus@hdrinc.com  
**Organization:** HDR, Inc.  
**Address:** 1 S. Church Ave., Suite 1400, Tucson AZ 85701  
**Phone:** 5205843610

---

## OVERALL STATUS

---

The information contained within this report comprises the recommendations of the New Mexico Department of Game and Fish (Department) for management and mitigation of proposed project impacts to wildlife and habitat resources; see the Project Recommendations section below for further details. No further consultation with the Department is required based on the project's location and, with implementation of mitigation measures described in the Project Recommendations section below, no adverse effects to wildlife or important habitats are anticipated. However, a Department biologist may be in touch within 30 days if they determine that further review is required.



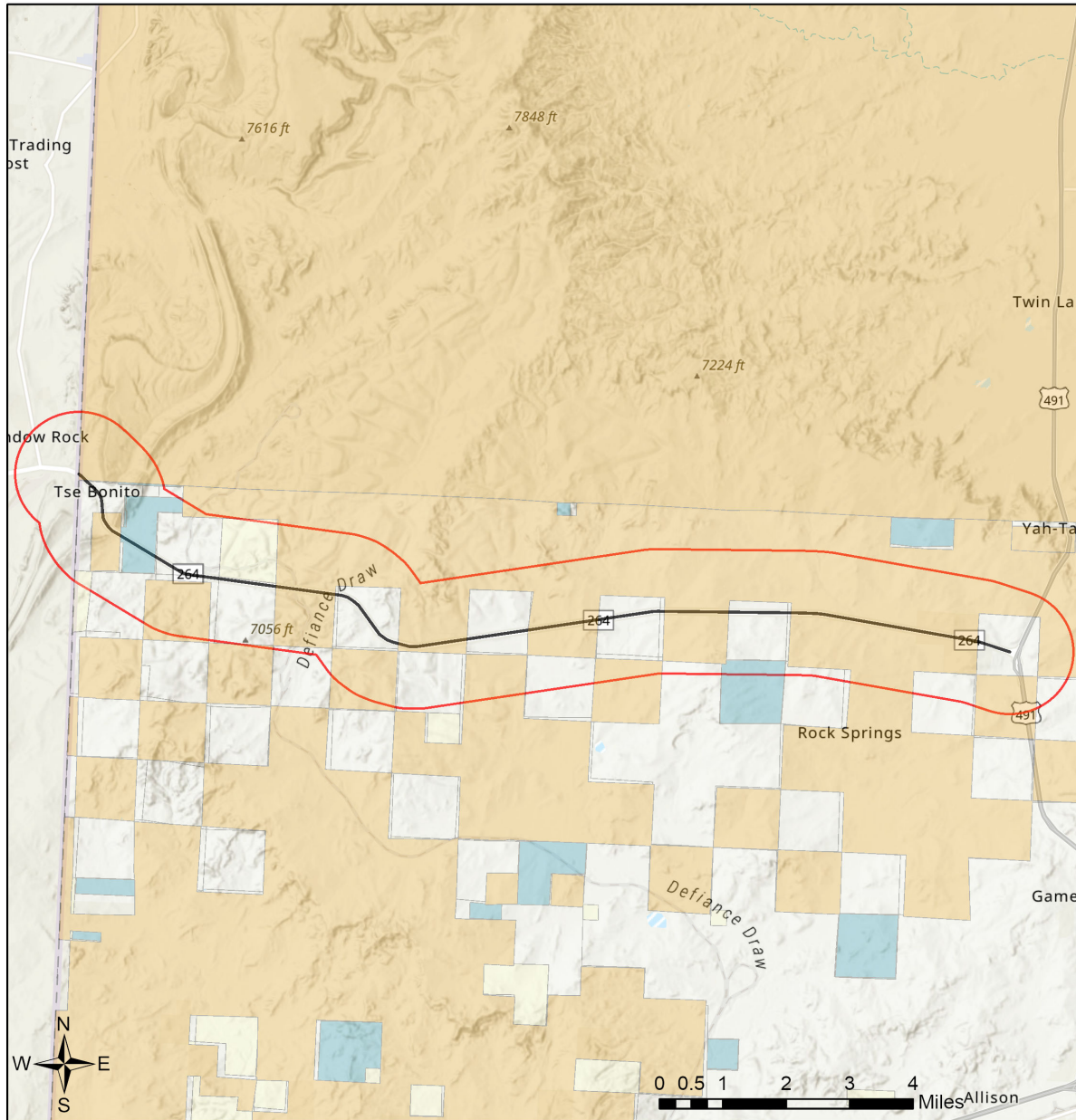
---

**About this report:**

- This environmental review is based on the project description and location that was entered. The report must be updated if the project type, area, or operational components are modified.
- This is a preliminary environmental screening assessment and report. It is not a substitute for the potential wildlife knowledge gained by having a biologist conduct a field survey of the project area. Federal status and plant data are provided as a courtesy to users. The review is also not intended to replace consultation required under the federal Endangered Species Act (ESA), including impact analyses for federal resources from the U.S. Fish and Wildlife Service (USFWS) using their [Information for Planning and Consultation tool](#).
- The New Mexico Environmental Review Tool (ERT) utilizes species observation locations and species distribution models, both of which are subject to ongoing change and refinement. Inclusion or omission of a species within a report can not guarantee species presence or absence at a precise point location, as might be indicated through comprehensive biological surveys. Specific questions regarding the potential for adverse impacts to vulnerable wildlife populations or habitats, especially in areas with a limited history of biological surveys, may require further on-site assessments.
- The Department encourages use of the ERT to modify proposed projects for avoidance, minimization, or mitigation of wildlife impacts. However, the ERT is not intended to be used in a repeatedly iterative fashion to adjust project attributes until a previously determined recommendation is generated. The ERT serves to assess impacts once project details are developed. The [New Mexico Crucial Habitat Assessment Tool](#) is the appropriate system for advising early-stage project planning and design to avoid areas of anticipated wildlife concerns and associated regulatory requirements.



# NM 264 MP 0-16



- |                           |                              |                              |   |
|---------------------------|------------------------------|------------------------------|---|
| Buffered Project Boundary | Department of Energy         | State Land Office            | U.S. Department of Agriculture              |
| Project Boundary          | NM Department of Game & Fish | State of New Mexico          | U.S. Fish and Wildlife Service              |
| Bureau of Land Management | NM State Forestry Division   | Tribal Land                  | U.S. Forest Service                         |
| City Land                 | NM State Parks               | U.S. Army Corps of Engineers | U.S. Natural Resources Conservation Service |
| County Land               | National Park Service        | U.S. Bureau of Reclamation   |   |
| Department of Defense     | Private                      |                              |   |

USGS, New Mexico Department of Game and Fish (NMDGF), Natural Heritage New Mexico (NHNM), and USDA Forest Service,

Compiled by Richard Norwood of NHNM over the period 2020 to 2021.

Sources: Esri, Airbus DS, USGS, NGA, NASA, CGIAR, N Robinson, NCEAS, NLS, OS, NMA, Geodastysreisen, Rijkswaterstaat, GSA, Geoland, FEMA, Intermap and the GIS user community



### Special Status Animal Species within 1 Miles of Project Area

Common Name	Scientific Name	USFWS (ESA)	NMDGF (WCA)	NMDGF SGCN/SERI
<a href="#">Northern Leopard Frog</a>	<a href="#">Lithobates pipiens</a>			SGCN
<a href="#">Eared Grebe</a>	<a href="#">Podiceps nigricollis</a>			SGCN
<a href="#">Peregrine Falcon</a>	<a href="#">Falco peregrinus</a>		T	SGCN
<a href="#">Lewis's Woodpecker</a>	<a href="#">Melanerpes lewis</a>			SGCN
<a href="#">Williamson's Sapsucker</a>	<a href="#">Sphyrapicus thyroideus</a>			SGCN
<a href="#">Olive-sided Flycatcher</a>	<a href="#">Contopus cooperi</a>			SGCN
<a href="#">Bank Swallow</a>	<a href="#">Riparia riparia</a>			SGCN
<a href="#">Pinyon Jay</a>	<a href="#">Gymnorhinus cyanocephalus</a>			SGCN
<a href="#">Clark's Nutcracker</a>	<a href="#">Nucifraga columbiana</a>			SGCN
<a href="#">Juniper Titmouse</a>	<a href="#">Baeolophus ridgwayi</a>			SGCN
<a href="#">Pygmy Nuthatch</a>	<a href="#">Sitta pygmaea</a>			SGCN
<a href="#">Western Bluebird</a>	<a href="#">Sialia mexicana</a>			SGCN
<a href="#">Loggerhead Shrike</a>	<a href="#">Lanius ludovicianus</a>			SGCN
<a href="#">Gray Vireo</a>	<a href="#">Vireo vicinior</a>		T	SGCN
<a href="#">Spotted Bat</a>	<a href="#">Euderma maculatum</a>		T	SGCN
<a href="#">Gunnison's Prairie Dog</a>	<a href="#">Cynomys gunnisoni</a>			SGCN
<a href="#">Black Bear</a>	<a href="#">Ursus americanus</a>			SERI
<a href="#">Cougar</a>	<a href="#">Puma concolor</a>			SERI
<a href="#">Mule Deer</a>	<a href="#">Odocoileus hemionus</a>			SERI

ESA = Endangered Species Act, WCA = Wildlife Conservation Act, SGCN = Species of Greatest Conservation Need, SERI = Species of Economic and Recreational Importance

### Special Status Plant Species within 1 Miles of Project Area

Common Name	Scientific Name	USFWS (ESA)	NMAC	NMRPCS
<a href="#">Narrow-Leaved Blazingstar</a>	<a href="#">Mentzelia filifolia</a>			SS

NMAC = New Mexico Administrative Code, NMRPCS = [New Mexico Rare Plant Conservation Strategy](#), SS = NM Rare Plant Conservation Strategy Species

### Project Recommendations

Since the proposed highway project includes bridge or road construction activities, the Department recommends implementation of its [Bridge and Culvert Construction Guidelines for Stream, Riparian, and Wetland Habitats](#) for any rivers, streams, washes, springs, seeps, or riparian areas that are fall within the impact footprint of this project. These guidelines should assist in minimizing impacts to the river or wetland, and should be incorporated into the standard best management practices for these types of construction activities.

The Department also recommends that preconstruction bat surveys be conducted during summer months to determine if bats occur. If bats are determined to occur at bridge sites, work should be scheduled to avoid impacting bats that may roost there (i.e., conduct work in winter months).



---

**Disclaimers regarding recommendations:**

- The Department provides technical guidance to support the persistence of all protected species of native fish and wildlife, including game and nongame wildlife species. Species listed within this report include those that have been documented to occur within the project area, and others that may not have been documented but are projected to occur within the project vicinity.
- Recommendations are provided by the Department under the authority of § 17-1-5.1 New Mexico Statutes Annotated 1978, to provide "communication and consultation with federal and other state agencies, local governments and communities, private organizations and affected interests responsible for habitat, wilderness, recreation, water quality and environmental protection to ensure comprehensive conservation services for hunters, anglers and nonconsumptive wildlife users".
- The Department has no authority for management of plants or Important Plant Areas. The [New Mexico Endangered Plant Program](#), under the Energy, Minerals, and Natural Resources Department's Forestry Division, identifies and develops conservation measures necessary to ensure the survival of plant species within New Mexico. Plant status information is provided within this report as a courtesy to users. Recommendations provided within the ERT may not be sufficient to preclude impacts to rare or sensitive plants, unless conservation measures are identified in coordination with the Endangered Plant Program.
- Additional coordination may also be necessary under the federal ESA or National Environmental Policy Act (NEPA). Further site-specific recommendations may be proposed during ESA and/or NEPA analyses, or through coordination with affected federal agencies.