



---

## PROJECT INFORMATION

---

**Project Title:** WUI - Rock Lake Fish Hatchery  
**Project Type:** FIRE MANAGEMENT, GENERAL  
**Latitude/Longitude (DMS):** 34.912944 / -104.674144  
**County(s):** GUADALUPE  
**Project Description:** October 1, 2022 - November 4, 2022 - Cut-stump treatment and slash/chipping treatment to occur post-bird nesting period and after Pecos sunflower, Wright's marsh thistle and Great Plains ladies-tresses orchid are dormant. Treatment combines chainsaw and lopper cutting of salt cedar and Russian olive and brushing of Habitat herbicide application on stem immediately after cutting invasives. Extreme care is needed within rare plant habitats. All woody slash material to be chipped.

---

## REQUESTOR INFORMATION

---

**Project Organization:** NM STATE FORESTRY  
**Contact Name:** Carmen Austin  
**Email Address:** carmelitam.austin@state.nm.us  
**Organization:** NM Forestry Division  
**Address:** 1220 S. St. Francis Dr., Santa Fe NM 87505  
**Phone:** 5056170119

---

## OVERALL STATUS

---

This report contains an initial list of recommendations regarding potential impacts to wildlife or wildlife habitats from the proposed project; see the Project Recommendations section below for further details. Your project proposal is being forwarded to a New Mexico Department of Game and Fish (Department) biologist for review to determine whether there are any additional recommendations regarding the proposed actions. A Department biologist will be in touch within 30 days if there are further recommendations regarding this project proposal.



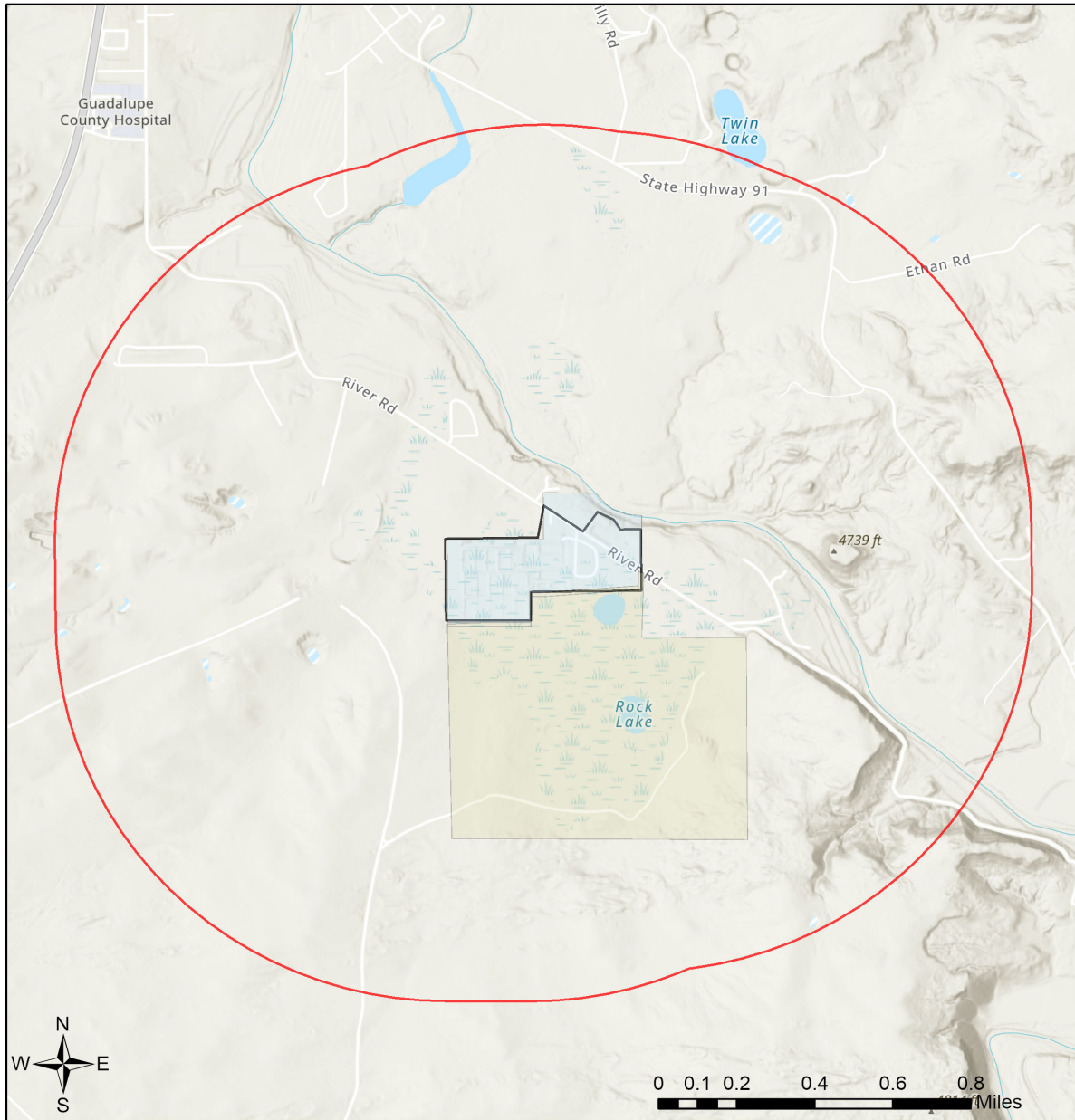
---

**About this report:**

- This environmental review is based on the project description and location that was entered. The report must be updated if the project type, area, or operational components are modified.
- This is a preliminary environmental screening assessment and report. It is not a substitute for the potential wildlife knowledge gained by having a biologist conduct a field survey of the project area. Federal status and plant data are provided as a courtesy to users. The review is also not intended to replace consultation required under the federal Endangered Species Act (ESA), including impact analyses for federal resources from the U.S. Fish and Wildlife Service (USFWS) using their [Information for Planning and Consultation tool](#).
- The New Mexico Environmental Review Tool (ERT) utilizes species observation locations and species distribution models, both of which are subject to ongoing change and refinement. Inclusion or omission of a species within a report can not guarantee species presence or absence at a precise point location, as might be indicated through comprehensive biological surveys. Specific questions regarding the potential for adverse impacts to vulnerable wildlife populations or habitats, especially in areas with a limited history of biological surveys, may require further on-site assessments.
- The Department encourages use of the ERT to modify proposed projects for avoidance, minimization, or mitigation of wildlife impacts. However, the ERT is not intended to be used in a repeatedly iterative fashion to adjust project attributes until a previously determined recommendation is generated. The ERT serves to assess impacts once project details are developed. The [New Mexico Crucial Habitat Assessment Tool](#) is the appropriate system for advising early-stage project planning and design to avoid areas of anticipated wildlife concerns and associated regulatory requirements.



## WUI - Rock Lake Fish Hatchery



- |                           |                              |                              |   |
|---------------------------|------------------------------|------------------------------|---|
| Buffered Project Boundary | Department of Energy         | State Land Office            | U.S. Department of Agriculture              |
| Project Boundary          | NM Department of Game & Fish | State of New Mexico          | U.S. Fish and Wildlife Service              |
| Bureau of Land Management | NM State Forestry Division   | Tribal Land                  | U.S. Forest Service                         |
| City Land                 | NM State Parks               | U.S. Army Corps of Engineers | U.S. Natural Resources Conservation Service |
| County Land               | National Park Service        | U.S. Bureau of Reclamation   |   |
| Department of Defense     | Private                      |                              |   |

USGS, New Mexico Department of Game and Fish (NMDGF), Natural Heritage New Mexico (NHNM), and USDA Forest Service,

Compiled by Richard Norwood of NHNM over the period 2020 to 2021.

Sources: Esri, Airbus DS, USGS, NGA, NASA, CGIAR, N Robinson, NCEAS, NLS, OS, NMA, Geodastystreisen, Rijkswaterstaat, GSA, Geoland, FEMA, Intermap and the GIS user community



**Special Status Animal Species within 1 Miles of Project Area**

Common Name	Scientific Name	USFWS (ESA)	NMDGF (WCA)	NMDGF SGCN/SERI
<a href="#">Northern Leopard Frog</a>	<a href="#">Lithobates pipiens</a>			SGCN
<a href="#">Eared Grebe</a>	<a href="#">Podiceps nigricollis</a>			SGCN
<a href="#">Bald Eagle</a>	<a href="#">Haliaeetus leucocephalus</a>		T	SGCN
<a href="#">Aplomado Falcon</a>	<a href="#">Falco femoralis</a>		E	SGCN
<a href="#">Peregrine Falcon</a>	<a href="#">Falco peregrinus</a>		T	SGCN
<a href="#">Mountain Plover</a>	<a href="#">Charadrius montanus</a>			SGCN
<a href="#">Long-Billed Curlew</a>	<a href="#">Numenius americanus</a>			SGCN
<a href="#">Lewis's Woodpecker</a>	<a href="#">Melanerpes lewis</a>			SGCN
<a href="#">Red-Headed Woodpecker</a>	<a href="#">Melanerpes erythrocephalus</a>			SGCN
<a href="#">Williamson's Sapsucker</a>	<a href="#">Sphyrapicus thyroideus</a>			SGCN
<a href="#">Olive-Sided Flycatcher</a>	<a href="#">Contopus cooperi</a>			SGCN
<a href="#">Bank Swallow</a>	<a href="#">Riparia riparia</a>			SGCN
<a href="#">Pinyon Jay</a>	<a href="#">Gymnorhinus cyanocephalus</a>			SGCN
<a href="#">Clark's Nutcracker</a>	<a href="#">Nucifraga columbiana</a>			SGCN
<a href="#">Juniper Titmouse</a>	<a href="#">Baeolophus ridgwayi</a>			SGCN
<a href="#">Pygmy Nuthatch</a>	<a href="#">Sitta pygmaea</a>			SGCN
<a href="#">Western Bluebird</a>	<a href="#">Sialia mexicana</a>			SGCN
<a href="#">Loggerhead Shrike</a>	<a href="#">Lanius ludovicianus</a>			SGCN
				SGCN
<a href="#">Rio Grande Chub</a>	<a href="#">Gila pandora</a>			SGCN
<a href="#">Suckermouth Minnow</a>	<a href="#">Phenacobius mirabilis</a>		T	SGCN
<a href="#">Bigscale Logperch</a>	<a href="#">Percina macrolepida</a>		T	SGCN
<a href="#">Least Shrew</a>	<a href="#">Cryptotis parva</a>		T	SGCN
<a href="#">Black-Tailed Prairie Dog</a>	<a href="#">Cynomys ludovicianus</a>			SGCN
<a href="#">Cougar</a>	<a href="#">Puma concolor</a>			SERI
<a href="#">Mule Deer</a>	<a href="#">Odocoileus hemionus</a>			SERI
<a href="#">Pronghorn</a>	<a href="#">Antilocapra americana americana</a>			SERI
				SERI

ESA = Endangered Species Act, WCA = Wildlife Conservation Act, SGCN = Species of Greatest Conservation Need, SERI = Species of Economic and Recreational Importance

**Special Status Plant Species within 1 Miles of Project Area**

Common Name	Scientific Name	USFWS (ESA)	NMAC	NMRPCS
<a href="#">Wright's Marsh Thistle</a>	<a href="#">Cirsium wrightii</a>	PT	E	SS
<a href="#">Puzzle Sunflower</a>	<a href="#">Helianthus paradoxus</a>	Threatened		

NMAC = New Mexico Administrative Code, NMRPCS = [New Mexico Rare Plant Conservation Strategy](#), SS = NM Rare Plant Conservation Strategy Species



---

## Project Recommendations

Your proposed project activities may require a custom review for assessment of potential effects to wildlife. See the "OVERALL STATUS" section above to determine the likelihood that your project will be reviewed further based on its location. A Department biologist will confirm whether any additional conservation measures are needed. You should expect to receive any additional project recommendations within 30 days of your project submission. If the "OVERALL STATUS" section indicates that no further consultation with the Department is required based on its location, then you will only receive additional project feedback from the Department if a biologist deems it necessary.

The proposed project occurs within or near a riparian area. Because riparian areas are important wildlife habitats, the project footprint should avoid removing any riparian vegetation or creating ground disturbance either directly within or affecting the riparian area, unless the project is intended to restore riparian habitat through non-native plant removal and replanting with native species. If your project involves removal of non-native riparian trees or planting of native riparian vegetation, please refer to the Department's habitat handbook guideline for [Restoration and Management of Native and Non-native Trees in Southwestern Riparian Ecosystems](#).

Your proposed project occurs within an area where springs or other important natural water features occur. This may result in the presence of a high use area for wildlife relative to the surrounding landscape. To ensure continued function of these important wildlife habitats, your project should consider measures to avoid the following.

- Altering surface or groundwater flow or hydrology,
- Disturbance to soil that modifies geomorphic properties or facilitates invasion of non-native vegetation.
- Affecting local surface or groundwater quality.
- Creating disturbance to wildlife utilizing these water features. Disturbance to wildlife can be reduced through practices including clustering infrastructure and activity wherever possible, avoiding large visual obstructions around water features, and limiting nighttime project operations or activities.

Department biologists are available for site-specific consultation regarding measures to assist with management and conservation of these habitat resources.

Your project occurs within important habitats for wildlife, which could include fawning/calving or wintering areas for species such as deer and elk, or high wildlife movement and activity areas. Management recommendations within these areas may include the following.

- Restrictions on noise-generating activities between December 1 and April 15. These activities would include oil and gas well pad development and operation that exposes wildlife to noises loud noises (at or above 48.6 dB(A) Leq at 400 feet in any direction from the source) from drilling, compressors, and pumping stations.
- Modifying fences along high use areas to make them wildlife friendly and facilitate large animal movement.
- Taking mitigation actions to reduce wildlife-vehicle collisions at high risk locations.



---

**Disclaimers regarding recommendations:**

- The Department provides technical guidance to support the persistence of all protected species of native fish and wildlife, including game and nongame wildlife species. Species listed within this report include those that have been documented to occur within the project area, and others that may not have been documented but are projected to occur within the project vicinity.
- Recommendations are provided by the Department under the authority of § 17-1-5.1 New Mexico Statutes Annotated 1978, to provide "communication and consultation with federal and other state agencies, local governments and communities, private organizations and affected interests responsible for habitat, wilderness, recreation, water quality and environmental protection to ensure comprehensive conservation services for hunters, anglers and nonconsumptive wildlife users".
- The Department has no authority for management of plants or Important Plant Areas. The [New Mexico Endangered Plant Program](#), under the Energy, Minerals, and Natural Resources Department's Forestry Division, identifies and develops conservation measures necessary to ensure the survival of plant species within New Mexico. Plant status information is provided within this report as a courtesy to users. Recommendations provided within the ERT may not be sufficient to preclude impacts to rare or sensitive plants, unless conservation measures are identified in coordination with the Endangered Plant Program.
- Additional coordination may also be necessary under the federal ESA or National Environmental Policy Act (NEPA). Further site-specific recommendations may be proposed during ESA and/or NEPA analyses, or through coordination with affected federal agencies.