



PROJECT INFORMATION

Project Title: Nogal Canyon WUI thinning
Project Type: FOREST MANAGEMENT, WILDLAND URBAN INTERFACE
Latitude/Longitude (DMS): 33.521642 / -105.714809
County(s): LINCOLN
Project Description: Reducing fuel loading on private property to restore forest condition to reduce chance of wildfire severity that was experienced in Nogal Canyon 4/12/22. Treatments will be a mix of hand cutting and mastication.

REQUESTOR INFORMATION

Project Organization:
Contact Name: Nick Smokovich
Email Address: nick.smokovich@state.nm.us
Organization: EMNRD Forestry Division
Address: 304 W. 2nd Street, Capitan NM 88316
Phone: 5753542231

OVERALL STATUS

This report contains an initial list of recommendations regarding potential impacts to wildlife or wildlife habitats from the proposed project; see the Project Recommendations section below for further details. Your project proposal is being forwarded to a New Mexico Department of Game and Fish (Department) biologist for review to determine whether there are any additional recommendations regarding the proposed actions. A Department biologist will be in touch within 30 days if there are further recommendations regarding this project proposal.

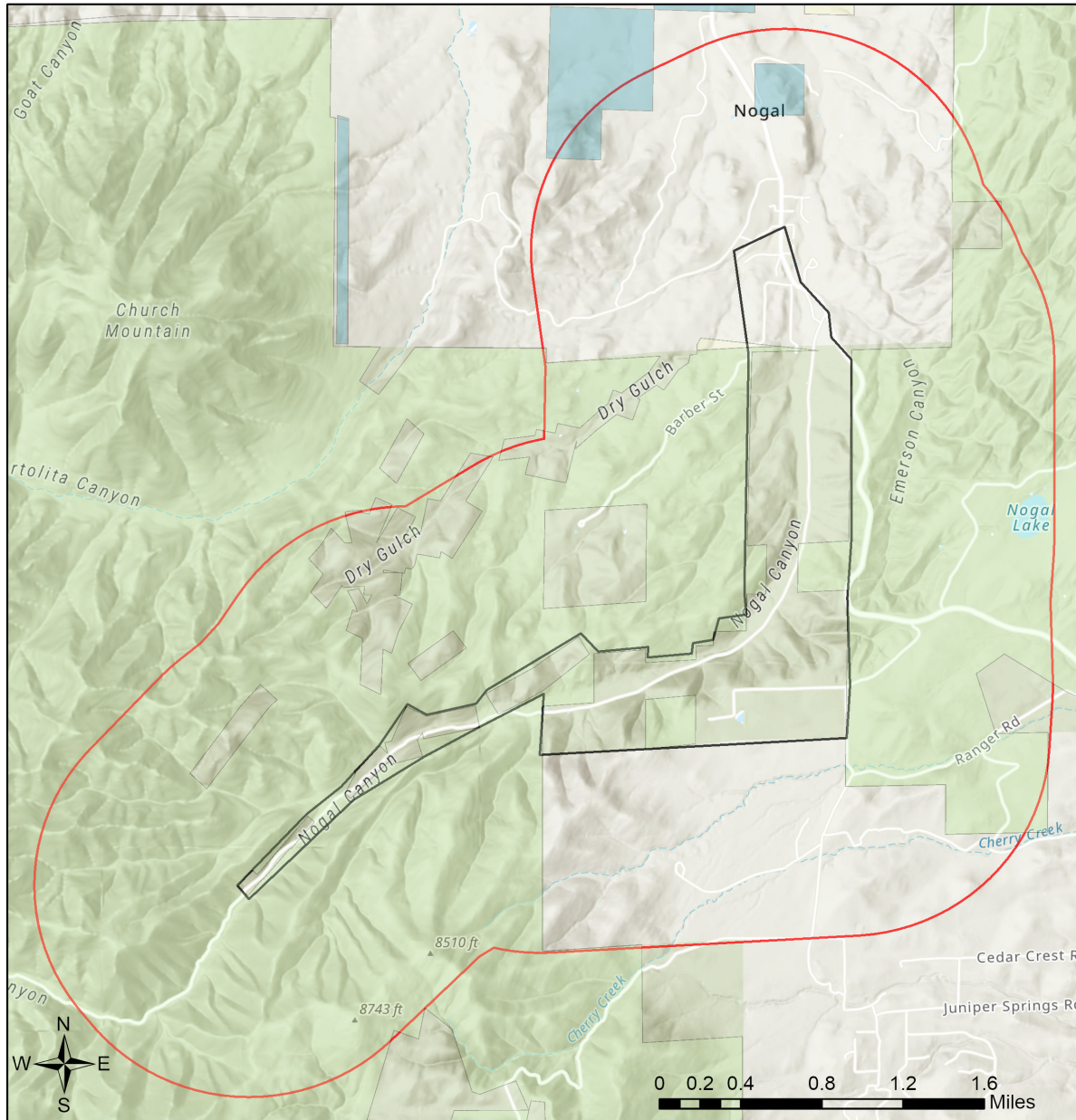
About this report:

- This environmental review is based on the project description and location that was entered. The report must be updated if the project type, area, or operational components are modified.
- This is a preliminary environmental screening assessment and report. It is not a substitute for the potential wildlife knowledge gained by having a biologist conduct a field survey of the project area. Federal status and plant data are provided as a courtesy to users. The review is also not intended to replace consultation required under the federal Endangered Species Act (ESA), including impact analyses for federal resources from the U.S. Fish and Wildlife Service (USFWS) using their [Information for Planning and Consultation tool](#).
- The New Mexico Environmental Review Tool (ERT) utilizes species observation locations and species distribution models, both of which are subject to ongoing change and refinement. Inclusion or omission of a species within a report can not guarantee species presence or absence at a precise point location, as might be indicated through comprehensive biological surveys. Specific questions regarding the potential for adverse impacts to vulnerable wildlife populations or habitats, especially in areas with a limited history of biological surveys, may require further on-site assessments.
- The Department encourages use of the ERT to modify proposed projects for avoidance, minimization, or mitigation of wildlife impacts. However, the ERT is not intended to be used in a repeatedly iterative fashion to adjust project attributes until a previously determined recommendation is generated. The ERT serves to assess impacts once project details are developed. The [New Mexico Crucial Habitat Assessment Tool](#) is the appropriate system for advising early-stage project planning and design to avoid areas of anticipated wildlife concerns and associated regulatory requirements.





Nogal Canyon WUI thinning



- | | | | |
|---------------------------|------------------------------|------------------------------|---|
| Buffered Project Boundary | Department of Energy | State Land Office | U.S. Department of Agriculture |
| Project Boundary | NM Department of Game & Fish | State of New Mexico | U.S. Fish and Wildlife Service |
| Bureau of Land Management | NM State Forestry Division | Tribal Land | U.S. Forest Service |
| City Land | NM State Parks | U.S. Army Corps of Engineers | U.S. Natural Resources Conservation Service |
| County Land | National Park Service | U.S. Bureau of Reclamation | |
| Department of Defense | Private | | |

USGS, New Mexico Department of Game and Fish (NMDGF), Natural Heritage New Mexico (NHNM), and USDA Forest Service,

Compiled by Richard Norwood of NHNM over the period 2020 to 2021.

Sources: Esri, Airbus DS, USGS, NGA, NASA, CGIAR, N Robinson, NCEAS, NLS, OS, NMA, Geodastysreisen, Rijkswaterstaat, GSA, Geoland, FEMA, Intermap and the GIS user community



Special Status Animal Species within 1 Miles of Project Area

Common Name	Scientific Name	USFWS (ESA)	NMDGF (WCA)	NMDGF SGCN/SERI
Northern Leopard Frog	Lithobates pipiens			SGCN
Common Black-Hawk	Buteogallus anthracinus		T	SGCN
Aplomado Falcon	Falco femoralis		E	SGCN
Peregrine Falcon	Falco peregrinus		T	SGCN
Mexican Spotted Owl	Strix occidentalis lucida	Threatened		SGCN
Lewis's Woodpecker	Melanerpes lewis			SGCN
Williamson's Sapsucker	Sphyrapicus thyroideus			SGCN
Bank Swallow	Riparia riparia			SGCN
Pinyon Jay	Gymnorhinus cyanocephalus			SGCN
Clark's Nutcracker	Nucifraga columbiana			SGCN
Juniper Titmouse	Baeolophus ridgwayi			SGCN
Pygmy Nuthatch	Sitta pygmaea			SGCN
Western Bluebird	Sialia mexicana			SGCN
Sprague's Pipit	Anthus spragueii			SGCN
Loggerhead Shrike	Lanius ludovicianus			SGCN
Gray Vireo	Vireo vicinior		T	SGCN
Spotted Bat	Euderma maculatum		T	SGCN
Black-Tailed Prairie Dog	Cynomys ludovicianus			SGCN
Black Bear	Ursus americanus			SERI
Cougar	Puma concolor			SERI
Elk	Cervus canadensis nelsoni			SERI
Mule Deer	Odocoileus hemionus			SERI

ESA = Endangered Species Act, WCA = Wildlife Conservation Act, SGCN = Species of Greatest Conservation Need, SERI = Species of Economic and Recreational Importance

Project Recommendations

Your proposed project activities may require a custom review for assessment of potential effects to wildlife. See the "OVERALL STATUS" section above to determine the likelihood that your project will be reviewed further based on its location. A Department biologist will confirm whether any additional conservation measures are needed. You should expect to receive any additional project recommendations within 30 days of your project submission. If the "OVERALL STATUS" section indicates that no further consultation with the Department is required based on its location, then you will only receive additional project feedback from the Department if a biologist deems it necessary.



All migratory birds are protected against direct take under the federal Migratory Bird Treaty Act (16 U.S.C. Sections 703-712) and hawks, falcons, vultures, owls, songbirds, and other insect-eating birds are protected under New Mexico State Statutes (17-2-13 and 17-2-14 NMSA), unless permitted by the applicable regulatory agency. To minimize the likelihood of adverse impacts to migratory bird nests, eggs, or nestlings during pipeline construction, the Department recommends that ground disturbance and vegetation removal activities be conducted outside of the primary migratory bird breeding season of April 15-September 1, or earlier if raptors are a primary concern or when working in low-elevation habitats such as deserts. If ground disturbing and clearing activities during the breeding season cannot be avoided, the area should be surveyed for active nest sites (with birds or eggs present in the nesting territory), and when occupied, nest disturbance should be avoided until young have fledged. For any active nests, adequate buffer zones should be established to minimize disturbance to nesting birds. Buffer distances should be 100 feet from songbird and raven nests, and 0.25 mile from raptor nests. Active nest sites in trees or shrubs that must be removed should be mitigated by qualified biologists or wildlife rehabilitators.

The list of [New Mexico Species of Greatest Conservation Need](#) (see link, page 14, table 5) and the federal list of [Birds of Conservation Concern](#) should be reviewed to fully evaluate potential effects to migratory birds from your proposed project. Federal agencies are also required under Executive Order 13186 to implement standards and practices that lessen the amount of unintentional take attributable to agency actions. These conservation measures are strongly recommended to ensure persistence of migratory bird species whose populations are small and/or declining within New Mexico.

Your proposed project occurs within an area where springs or other important natural water features occur. This may result in the presence of a high use area for wildlife relative to the surrounding landscape. To ensure continued function of these important wildlife habitats, your project should consider measures to avoid the following.

- Altering surface or groundwater flow or hydrology,
- Disturbance to soil that modifies geomorphic properties or facilitates invasion of non-native vegetation.
- Affecting local surface or groundwater quality.
- Creating disturbance to wildlife utilizing these water features. Disturbance to wildlife can be reduced through practices including clustering infrastructure and activity wherever possible, avoiding large visual obstructions around water features, and limiting nighttime project operations or activities.

Department biologists are available for site-specific consultation regarding measures to assist with management and conservation of these habitat resources.

Your project occurs within important habitats for wildlife, which could include fawning/calving or wintering areas for species such as deer and elk, or high wildlife movement and activity areas. Management recommendations within these areas may include the following.

- Restrictions on noise-generating activities between December 1 and April 15. These activities would include oil and gas well pad development and operation that exposes wildlife to noises loud noises (at or above 48.6 dB(A) Leq at 400 feet in any direction from the source) from drilling, compressors, and pumping stations.
- Modifying fences along high use areas to make them wildlife friendly and facilitate large animal movement.
- Taking mitigation actions to reduce wildlife-vehicle collisions at high risk locations.



Disclaimers regarding recommendations:

- The Department provides technical guidance to support the persistence of all protected species of native fish and wildlife, including game and nongame wildlife species. Species listed within this report include those that have been documented to occur within the project area, and others that may not have been documented but are projected to occur within the project vicinity.
- Recommendations are provided by the Department under the authority of § 17-1-5.1 New Mexico Statutes Annotated 1978, to provide "communication and consultation with federal and other state agencies, local governments and communities, private organizations and affected interests responsible for habitat, wilderness, recreation, water quality and environmental protection to ensure comprehensive conservation services for hunters, anglers and nonconsumptive wildlife users".
- The Department has no authority for management of plants or Important Plant Areas. The [New Mexico Endangered Plant Program](#), under the Energy, Minerals, and Natural Resources Department's Forestry Division, identifies and develops conservation measures necessary to ensure the survival of plant species within New Mexico. Plant status information is provided within this report as a courtesy to users. Recommendations provided within the ERT may not be sufficient to preclude impacts to rare or sensitive plants, unless conservation measures are identified in coordination with the Endangered Plant Program.
- Additional coordination may also be necessary under the federal ESA or National Environmental Policy Act (NEPA). Further site-specific recommendations may be proposed during ESA and/or NEPA analyses, or through coordination with affected federal agencies.