



---

## PROJECT INFORMATION

---

**Project Title:** Jicarilla Natural Resource Management Plan  
**Project Type:** (NO PROJECT REVIEW) SPECIES LIST ONLY  
**Latitude/Longitude (DMS):** 36.568038 / -107.049657  
**County(s):** RIO ARRIBA; SANDOVAL  
**Project Description:** The Jicarilla Apache Nation, Bureau of Indian Affairs (BIA) Jicarilla Agency, and the BIA Southwest Regional Office propose to develop a Natural Resource Management Plan (NRMP). The NRMP would provide guidance for the management of natural resources on Tribal trust lands, while ensuring a healthy ecosystem and protection of cultural resources. The purpose of the proposal is to develop a Natural Resource Management Plan for the Jicarilla Apache Nation that is based on the requirements outlined in the American Indian Agricultural Resource Management Act of 1993 (P.L. 103-177). The American Indian Agricultural Resource Management Act states that the BIA will assist tribes in developing conservation and management plans to protect and preserve their natural resources on trust land and shared off-reservation resources. Although JAN has a current Integrated Resource Management Plan, a NRMP prepared by the Branch of Natural Resources will help further identify specific rangeland and agricultural resources, define alternative management objectives for these resources, and define actions that may be taken to implement these objectives. The IRMP, which identifies some specific tribal rangeland and agricultural issues and goals, would be supplemented with the more comprehensive data and management recommendations of the NRMP. Together the two documents would provide sound direction to manage the Jicarilla Apache Nation's rangeland and agricultural resources consistent with the Nation's plans to maintain and protect other values such as wildlife, fisheries, cultural values, and recreation, and to help regulate water runoff and minimize soil erosion. The NRMP would serve as the Tribe's long-term strategic vision for the range and agricultural components of the Natural Resources Branch.

---

## REQUESTOR INFORMATION

---

**Project Organization:**  
**Contact Name:** Stephanie Lee  
**Email Address:** stephanie.lee@bric-dine.com  
**Organization:** BRIC LLC  
**Address:** 8901 Adams Street NE, Suite B, Albuquerque, Albuquerque NM 87113  
**Phone:** 5055634702

---

## OVERALL STATUS

---



---

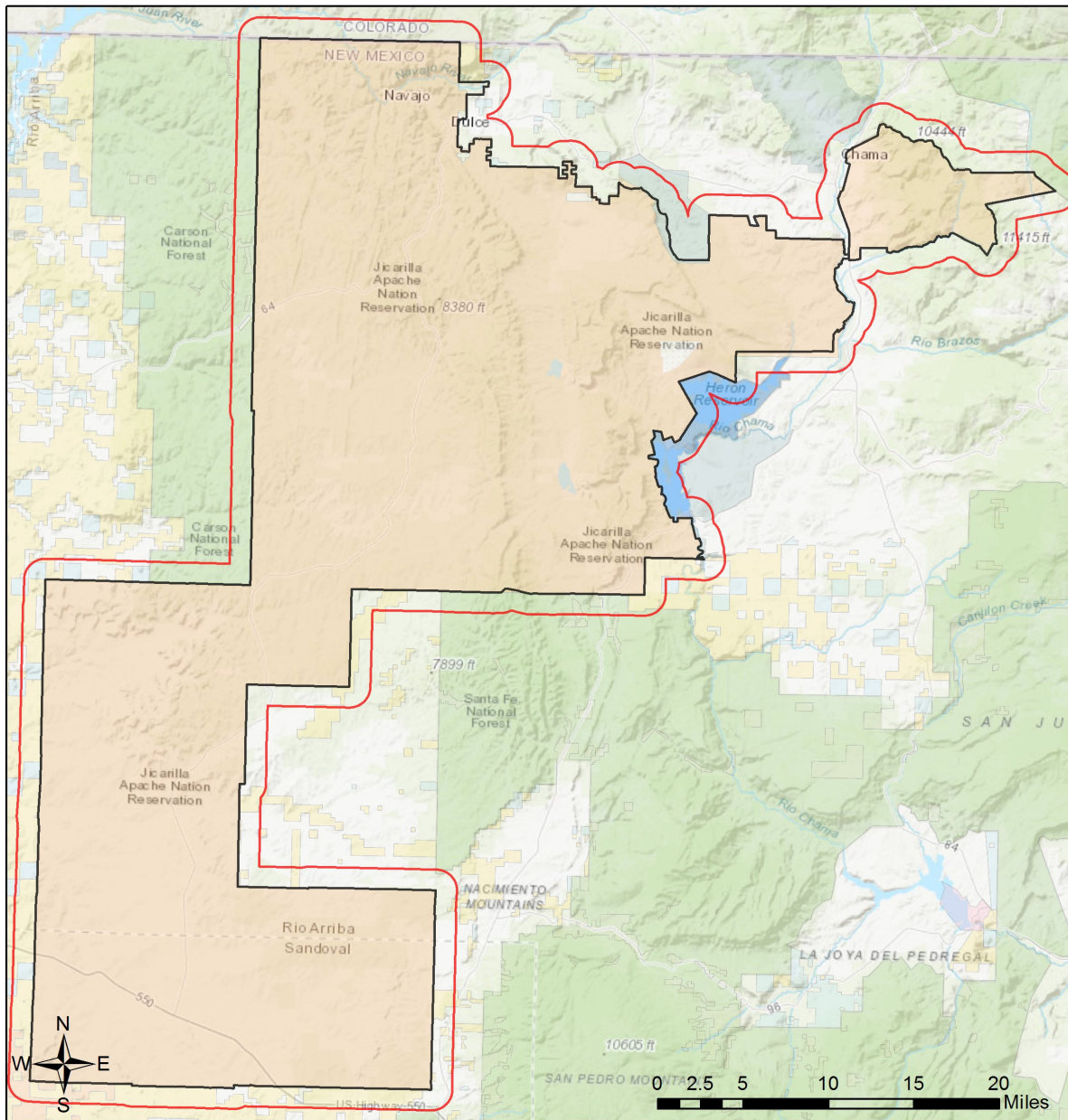
This report contains an initial list of recommendations regarding potential impacts to wildlife or wildlife habitats from the proposed project; see the Project Recommendations section below for further details. Your project proposal is being forwarded to a New Mexico Department of Game and Fish (Department) biologist for review to determine whether there are any additional recommendations regarding the proposed actions. A Department biologist will be in touch within 30 days if there are further recommendations regarding this project proposal.

**About this report:**

- This environmental review is based on the project description and location that was entered. The report must be updated if the project type, area, or operational components are modified.
- This is a preliminary environmental screening assessment and report. It is not a substitute for the potential wildlife knowledge gained by having a biologist conduct a field survey of the project area. Federal status and plant data are provided as a courtesy to users. The review is also not intended to replace consultation required under the federal Endangered Species Act (ESA), including impact analyses for federal resources from the U.S. Fish and Wildlife Service (USFWS) using their [Information for Planning and Consultation tool](#).
- The New Mexico Environmental Review Tool (ERT) utilizes species observation locations and species distribution models, both of which are subject to ongoing change and refinement. Inclusion or omission of a species within a report can not guarantee species presence or absence at a precise point location, as might be indicated through comprehensive biological surveys. Specific questions regarding the potential for adverse impacts to vulnerable wildlife populations or habitats, especially in areas with a limited history of biological surveys, may require further on-site assessments.
- The Department encourages use of the ERT to modify proposed projects for avoidance, minimization, or mitigation of wildlife impacts. However, the ERT is not intended to be used in a repeatedly iterative fashion to adjust project attributes until a previously determined recommendation is generated. The ERT serves to assess impacts once project details are developed. The [New Mexico Crucial Habitat Assessment Tool](#) is the appropriate system for advising early-stage project planning and design to avoid areas of anticipated wildlife concerns and associated regulatory requirements.



## Jicarilla Natural Resource Management Plan



Sources: Esri, HERE, Garmin, Intermap, increment P Corp., GEBCO, USGS, FAO, NPS, NRCAN, GeoBase, IGN, Kadaster NL, Ordnance Survey, Esri Japan, METI, Esri China (Hong Kong), (c) OpenStreetMap contributors, and the GIS User Community



**Special Status Animal Species within 2000 Meters of Project Area**

Common Name	Scientific Name	USFWS (ESA)	NMDGF (WCA)	NMDGF SGCN/SERI
<a href="#">Western Toad</a>	<a href="#">Anaxyrus boreas</a>	PS	E	SGCN
<a href="#">Boreal Chorus Frog</a>	<a href="#">Pseudacris maculata</a>			SGCN
<a href="#">Northern Leopard Frog</a>	<a href="#">Lithobates pipiens</a>			SGCN
<a href="#">Eared Grebe</a>	<a href="#">Podiceps nigricollis</a>			SGCN
<a href="#">American Bittern</a>	<a href="#">Botaurus lentiginosus</a>			SGCN
<a href="#">White-Faced Ibis</a>	<a href="#">Plegadis chihi</a>			SGCN
<a href="#">Bald Eagle</a>	<a href="#">Haliaeetus leucocephalus</a>		T	SGCN
<a href="#">Peregrine Falcon</a>	<a href="#">Falco peregrinus</a>		T	SGCN
<a href="#">Mountain Plover</a>	<a href="#">Charadrius montanus</a>			SGCN
<a href="#">Mexican Spotted Owl</a>	<a href="#">Strix occidentalis lucida</a>	LT		SGCN
<a href="#">Boreal Owl</a>	<a href="#">Aegolius funereus</a>		T	SGCN
<a href="#">Black Swift</a>	<a href="#">Cypseloides niger</a>			SGCN
<a href="#">Lewis's Woodpecker</a>	<a href="#">Melanerpes lewis</a>			SGCN
<a href="#">Williamson's Sapsucker</a>	<a href="#">Sphyrapicus thyroideus</a>			SGCN
<a href="#">Olive-Sided Flycatcher</a>	<a href="#">Contopus cooperi</a>			SGCN
<a href="#">Southwestern Willow Flycatcher</a>	<a href="#">Empidonax traillii eximius</a>	LE	E	SGCN
<a href="#">Bank Swallow</a>	<a href="#">Riparia riparia</a>			SGCN
<a href="#">Pinyon Jay</a>	<a href="#">Gymnorhinus cyanocephalus</a>			SGCN
<a href="#">Clark's Nutcracker</a>	<a href="#">Nucifraga columbiana</a>			SGCN
<a href="#">Juniper Titmouse</a>	<a href="#">Baeolophus ridgwayi</a>			SGCN
<a href="#">Pygmy Nuthatch</a>	<a href="#">Sitta pygmaea</a>			SGCN
<a href="#">Western Bluebird</a>	<a href="#">Sialia mexicana</a>			SGCN
<a href="#">Loggerhead Shrike</a>	<a href="#">Lanius ludovicianus</a>			SGCN
<a href="#">Gray Vireo</a>	<a href="#">Vireo vicinior</a>		T	SGCN
<a href="#">Savannah Sparrow</a>	<a href="#">Passerculus sandwichensis</a>			SGCN
<a href="#">Brown-Capped Rosy-Finch</a>	<a href="#">Leucosticte australis</a>			SGCN
<a href="#">Kokanee Salmon</a>	<a href="#">Oncorhynchus nerka</a>			SERI
<a href="#">Rio Grande Cutthroat Trout</a>	<a href="#">Oncorhynchus clarkii virginalis</a>			SERI
<a href="#">Rainbow Trout</a>	<a href="#">Oncorhynchus mykiss</a>			SERI
<a href="#">Brown Trout</a>	<a href="#">Salmo trutta</a>			SERI
<a href="#">Brook Trout</a>	<a href="#">Salvelinus fontinalis</a>			SERI
<a href="#">Rio Grande Chub</a>	<a href="#">Gila pandora</a>			SGCN
<a href="#">White Sucker</a>	<a href="#">Catostomus commersonii</a>			SGCN
<a href="#">Spotted Bat</a>	<a href="#">Euderma maculatum</a>		T	SGCN
<a href="#">American Pika</a>	<a href="#">Ochotona princeps</a>			SGCN
<a href="#">Gunnison's Prairie Dog</a>	<a href="#">Cynomys gunnisoni</a>			SGCN
<a href="#">Black Bear</a>	<a href="#">Ursus americanus</a>			SERI



### Special Status Animal Species within 2000 Meters of Project Area

Common Name	Scientific Name	USFWS (ESA)	NMDGF (WCA)	NMDGF SGCN/SERI
<a href="#">Cougar</a>	<a href="#">Puma concolor</a>			SERI
<a href="#">Elk</a>	<a href="#">Cervus canadensis nelsoni</a>			SERI
<a href="#">Mule Deer</a>	<a href="#">Odocoileus hemionus</a>			SERI
<a href="#">Pronghorn</a>	<a href="#">Antilocapra americana americana</a>			SERI
				SERI

ESA = Endangered Species Act, WCA = Wildlife Conservation Act, SGCN = Species of Greatest Conservation Need, SERI = Species of Economic and Recreational Importance

### Special Status Plant Species within 2000 Meters of Project Area

Common Name	Scientific Name	USFWS (ESA)	NMAC	NMRPCS
<a href="#">Sessile-Flower False Carrot</a>	<a href="#">Aletes sessiliflorus</a>			
<a href="#">A Milkvetch</a>	<a href="#">Astragalus iodopetalus</a>			SS
<a href="#">Pagosa Milkvetch</a>	<a href="#">Astragalus missouriensis var. humistratus</a>			SS
<a href="#">Arbores Milkvetch</a>	<a href="#">Astragalus oocalycis</a>			SS
<a href="#">Chama Blazing Star</a>	<a href="#">Mentzelia conspicua</a>			SS
<a href="#">Pagosa Phlox</a>	<a href="#">Phlox caryophylla</a>			SS

NMAC = New Mexico Administrative Code, NMRPCS = [New Mexico Rare Plant Conservation Strategy](#), SS = NM Rare Plant Conservation Strategy Species

### Project Recommendations

This report includes a preliminary species list that may be used during early stages of project or conservation planning. Even if this report indicates that your proposed project location would require a custom review from a biologist, **no review will be returned** until additional project details are provided. **To obtain a project review**, please submit additional details regarding the **type** of project, project **objectives**, anticipated project **duration**, **timing** of project construction, the composition and dimensions/quantities of **materials** that will be utilized for project implementation, any **equipment** that will be used, anticipated **ground disturbance** that will occur, wildlife surveys or observations that have occurred on or near the project site, and **any other relevant details** regarding potential effects of project activities on wildlife or wildlife habitat. **Photographs** of the project site are especially useful.

Although this project report may include management recommendations based on the project location, additional conservation measures may be needed. The Department can not fully assess potential effects and associated management recommendations until a **project type and description** have been submitted, and an appropriate **impact buffer** for that project type has been applied. Also, the species list within this report represents an estimation of special status species that could be present at the site of a small-scale project. Species lists for projects that occur across **broader geographic scales** (e.g., one or more counties, multiple habitat types) are more appropriately obtained from the **Department's Biota Information System of New Mexico (BISON-M) database**. Species lists generated by the ERT may contain modeled species distributions in order to predict species occurrences within areas that lack previous wildlife inventories or surveys. This list can be refined using occurrence-based information within BISON-M regarding wildlife-habitat relationships and biological needs for species that might be present within the project footprint.



Burrowing owl is known to occur within or near your project area. Before any ground disturbing activities occur, the Department recommends that a preliminary survey be conducted between April and September, using the Department's [burrowing owl survey protocol](#). Should burrowing owls be documented in the project area, please contact the Department or USFWS for further recommendations regarding relocation or avoidance of impacts.

The proposed project occurs within or near a riparian area. Because riparian areas are important wildlife habitats, the project footprint should avoid removing any riparian vegetation or creating ground disturbance either directly within or affecting the riparian area. If your project involves removal of non-native riparian trees or planting of native riparian vegetation, please refer to the Department's habitat handbook guideline for [Restoration and Management of Native and Non-native Trees in Southwestern Riparian Ecosystems](#).

Your proposed project occurs within an area where springs or other important natural water features occur. This may result in the presence of a high use area for wildlife relative to the surrounding landscape. To ensure continued function of these important wildlife habitats, your project should consider measures to avoid the following.

- Altering surface or groundwater flow or hydrology,
- Disturbance to soil that modifies geomorphic properties or facilitates invasion of non-native vegetation.
- Affecting local surface or groundwater quality.
- Creating disturbance to wildlife utilizing these water features. Disturbance to wildlife can be reduced through practices including clustering infrastructure and activity wherever possible, avoiding large visual obstructions around water features, and limiting nighttime project operations or activities.

Department biologists are available for site-specific consultation regarding measures to assist with management and conservation of these habitat resources.

#### **Disclaimers regarding recommendations:**

- The Department provides technical guidance to support the persistence of all protected species of native fish and wildlife, including game and nongame wildlife species. Species listed within this report include those that have been documented to occur within the project area, and others that may not have been documented but are projected to occur within the project vicinity.
- Recommendations are provided by the Department under the authority of § 17-1-5.1 New Mexico Statutes Annotated 1978, to provide "communication and consultation with federal and other state agencies, local governments and communities, private organizations and affected interests responsible for habitat, wilderness, recreation, water quality and environmental protection to ensure comprehensive conservation services for hunters, anglers and nonconsumptive wildlife users".
- The Department has no authority for management of plants or Important Plant Areas. The [New Mexico Endangered Plant Program](#), under the Energy, Minerals, and Natural Resources Department's Forestry Division, identifies and develops conservation measures necessary to ensure the survival of plant species within New Mexico. Plant status information is provided within this report as a courtesy to users. Recommendations provided within the ERT may not be sufficient to preclude impacts to rare or sensitive plants, unless conservation measures are identified in coordination with the Endangered Plant Program.
- Additional coordination may also be necessary under the federal ESA or National Environmental Policy Act (NEPA). Further site-specific recommendations may be proposed during ESA and/or NEPA analyses, or through coordination with affected federal agencies.