



---

## PROJECT INFORMATION

---

**Project Title:** Ruidoso utility project part 1  
**Project Type:** (NO PROJECT REVIEW) SPECIES LIST ONLY  
**Latitude/Longitude (DMS):** 33.316139 / -105.627943  
**County(s):** LINCOLN  
**Project Description:** Just another utility review project

## REQUESTOR INFORMATION

---

**Project Organization:**  
**Contact Name:** Joel Lusk  
**Email Address:** jlusk@usbr.gov  
**Organization:** Bureau of Reclamation  
**Address:** 555 Broadway Blvd NE, Suite 100, Albuquerque NM 87102  
**Phone:** 505-462-3548

## OVERALL STATUS

---

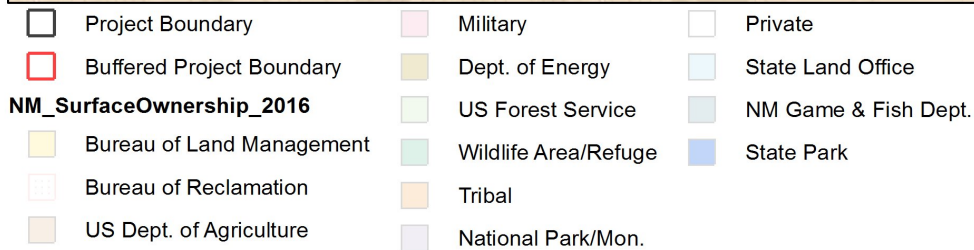
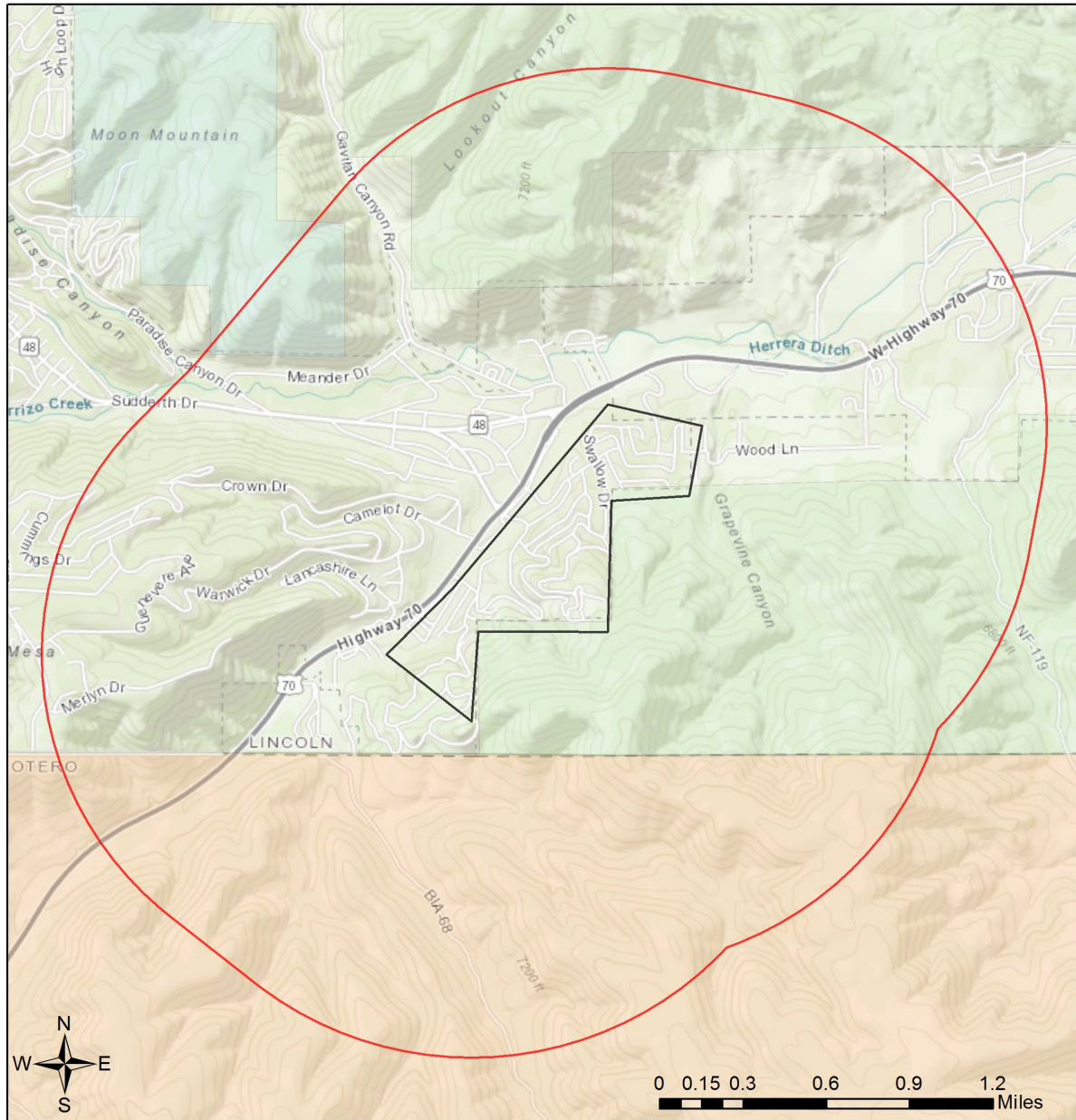
The information contained within this report comprises the recommendations of the New Mexico Department of Game and Fish (Department) for management and mitigation of proposed project impacts to wildlife and habitat resources; see the Project Recommendations section below for further details. No further consultation with the Department is required based on the project's location and, with implementation of mitigation measures described in the Project Recommendations section below, no adverse effects to wildlife or important habitats are anticipated. However, a Department biologist may be in touch within 30 days if they determine that further review is required.

### About this report:

- This environmental review is based on the project description and location that was entered. The report must be updated if the project type, area, or operational components are modified.
- This is a preliminary environmental screening assessment and report. It is not a substitute for the potential wildlife knowledge gained by having a biologist conduct a field survey of the project area. Federal status and plant data are provided as a courtesy to users. The review is also not intended to replace consultation required under the federal Endangered Species Act (ESA), including impact analyses for federal resources from the U.S. Fish and Wildlife Service (USFWS) using their [Information for Planning and Consultation tool](#).
- The New Mexico Environmental Review Tool (ERT) utilizes species observation locations and species distribution models, both of which are subject to ongoing change and refinement. Inclusion or omission of a species within a report can not guarantee species presence or absence at a precise point location, as might be indicated through comprehensive biological surveys. Specific questions regarding the potential for adverse impacts to vulnerable wildlife populations or habitats, especially in areas with a limited history of biological surveys, may require further on-site assessments.
- The Department encourages use of the ERT to modify proposed projects for avoidance, minimization, or mitigation of wildlife impacts. However, the ERT is not intended to be used in a repeatedly iterative fashion to adjust project attributes until a previously determined recommendation is generated. The ERT serves to assess impacts once project details are developed. The [New Mexico Crucial Habitat Assessment Tool](#) is the appropriate system for advising early-stage project planning and design to avoid areas of anticipated wildlife concerns and associated regulatory requirements.



## Ruidoso utility project part 1



Sources: Esri, HERE, Garmin, Intermap, increment P Corp., GEBCO, USGS, FAO, NPS, NRCAN, GeoBase, IGN, Kadaster NL, Ordnance Survey, Esri Japan, METI, Esri China (Hong Kong), (c) OpenStreetMap contributors, and the GIS User Community



### Special Status Animal Species within 2000 Meters of Project Area

Common Name	Scientific Name	USFWS (ESA)	NMDGF (WCA)	NMDGF SGCN/SERI
<a href="#">Northern Leopard Frog</a>	<a href="#">Lithobates pipiens</a>			SGCN
<a href="#">Bald Eagle</a>	<a href="#">Haliaeetus leucocephalus</a>		T	SGCN
<a href="#">Aplomado Falcon</a>	<a href="#">Falco femoralis</a>		E	SGCN
<a href="#">Peregrine Falcon</a>	<a href="#">Falco peregrinus</a>		T	SGCN
<a href="#">Lewis's Woodpecker</a>	<a href="#">Melanerpes lewis</a>			SGCN
<a href="#">Williamson's Sapsucker</a>	<a href="#">Sphyrapicus thyroideus</a>			SGCN
<a href="#">Bank Swallow</a>	<a href="#">Riparia riparia</a>			SGCN
<a href="#">Pinyon Jay</a>	<a href="#">Gymnorhinus cyanocephalus</a>			SGCN
<a href="#">Pygmy Nuthatch</a>	<a href="#">Sitta pygmaea</a>			SGCN
<a href="#">Western Bluebird</a>	<a href="#">Sialia mexicana</a>			SGCN
<a href="#">Loggerhead Shrike</a>	<a href="#">Lanius ludovicianus</a>			SGCN
<a href="#">Gray Vireo</a>	<a href="#">Vireo vicinior</a>		T	SGCN
<a href="#">Brown Trout</a>	<a href="#">Salmo trutta</a>			SERI
<a href="#">Spotted Bat</a>	<a href="#">Euderma maculatum</a>		T	SGCN
<a href="#">Black-Tailed Prairie Dog</a>	<a href="#">Cynomys ludovicianus</a>			SGCN
<a href="#">Black Bear</a>	<a href="#">Ursus americanus</a>			SERI
<a href="#">Cougar</a>	<a href="#">Puma concolor</a>			SERI
<a href="#">Elk</a>	<a href="#">Cervus canadensis nelsoni</a>			SERI
<a href="#">Mule Deer</a>	<a href="#">Odocoileus hemionus</a>			SERI

ESA = Endangered Species Act, WCA = Wildlife Conservation Act, SGCN = Species of Greatest Conservation Need, SERI = Species of Economic and Recreational Importance

### Project Recommendations

This report includes a preliminary species list that may be used during early stages of project or conservation planning. Even if this report indicates that your proposed project location would require a custom review from a biologist, **no review will be returned** until additional project details are provided. **To obtain a project review**, please submit additional details regarding the **type** of project, project **objectives**, anticipated project **duration**, **timing** of project construction, the composition and dimensions/quantities of **materials** that will be utilized for project implementation, any **equipment** that will be used, anticipated **ground disturbance** that will occur, wildlife surveys or observations that have occurred on or near the project site, and **any other relevant details** regarding potential effects of project activities on wildlife or wildlife habitat. **Photographs** of the project site are especially useful.

Although this project report may include management recommendations based on the project location, additional conservation measures may be needed. The Department can not fully assess potential effects and associated management recommendations until a **project type and description** have been submitted, and an appropriate **impact buffer** for that project type has been applied. Also, the species list within this report represents an estimation of special status species that could be present at the site of a small-scale project. Species lists for projects that occur across **broader geographic scales** (e.g., one or more counties, multiple habitat types) are more appropriately obtained from the **Department's Biota Information System of New Mexico (BISON-M) database**. Species lists generated by the ERT may contain modeled species distributions in order to predict species occurrences within areas that lack previous wildlife inventories or surveys. This list can be refined using occurrence-based information within BISON-M regarding wildlife-habitat relationships and biological needs for species that might be present within the project footprint.



The proposed project occurs within or near a riparian area. Because riparian areas are important wildlife habitats, the project footprint should avoid removing any riparian vegetation or creating ground disturbance either directly within or affecting the riparian area. If your project involves removal of non-native riparian trees or planting of native riparian vegetation, please refer to the Department's habitat handbook guideline for [Restoration and Management of Native and Non-native Trees in Southwestern Riparian Ecosystems](#).

Your proposed project occurs within an area where springs or other important natural water features occur. This may result in the presence of a high use area for wildlife relative to the surrounding landscape. To ensure continued function of these important wildlife habitats, your project should consider measures to avoid the following.

- Altering surface or groundwater flow or hydrology,
- Disturbance to soil that modifies geomorphic properties or facilitates invasion of non-native vegetation.
- Affecting local surface or groundwater quality.
- Creating disturbance to wildlife utilizing these water features. Disturbance to wildlife can be reduced through practices including clustering infrastructure and activity wherever possible, avoiding large visual obstructions around water features, and limiting nighttime project operations or activities.

Department biologists are available for site-specific consultation regarding measures to assist with management and conservation of these habitat resources.

**Disclaimers regarding recommendations:**

- The Department provides technical guidance to support the persistence of all protected species of native fish and wildlife, including game and nongame wildlife species. Species listed within this report include those that have been documented to occur within the project area, and others that may not have been documented but are projected to occur within the project vicinity.
- Recommendations are provided by the Department under the authority of § 17-1-5.1 New Mexico Statutes Annotated 1978, to provide "communication and consultation with federal and other state agencies, local governments and communities, private organizations and affected interests responsible for habitat, wilderness, recreation, water quality and environmental protection to ensure comprehensive conservation services for hunters, anglers and nonconsumptive wildlife users".
- The Department has no authority for management of plants or Important Plant Areas. The [New Mexico Endangered Plant Program](#), under the Energy, Minerals, and Natural Resources Department's Forestry Division, identifies and develops conservation measures necessary to ensure the survival of plant species within New Mexico. Plant status information is provided within this report as a courtesy to users. Recommendations provided within the ERT may not be sufficient to preclude impacts to rare or sensitive plants, unless conservation measures are identified in coordination with the Endangered Plant Program.
- Additional coordination may also be necessary under the federal ESA or National Environmental Policy Act (NEPA). Further site-specific recommendations may be proposed during ESA and/or NEPA analyses, or through coordination with affected federal agencies.